

LOC I-HOV 110.5	APP CRS 196°	Rwy Idg 10302 TDZE 1330 Apt Elev 1333
---------------------------	------------------------	--

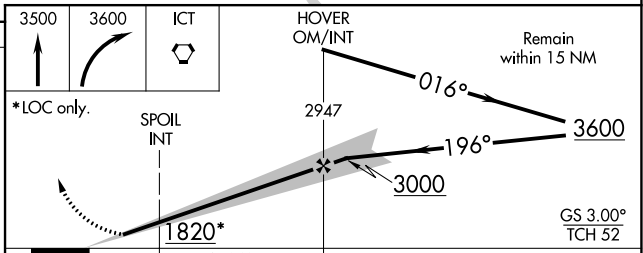
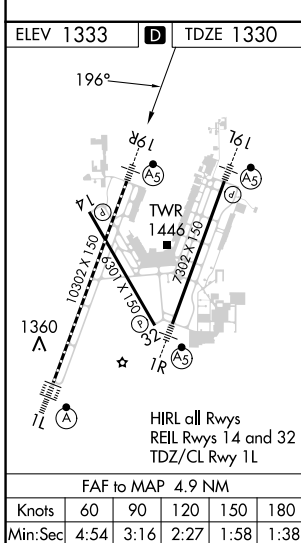
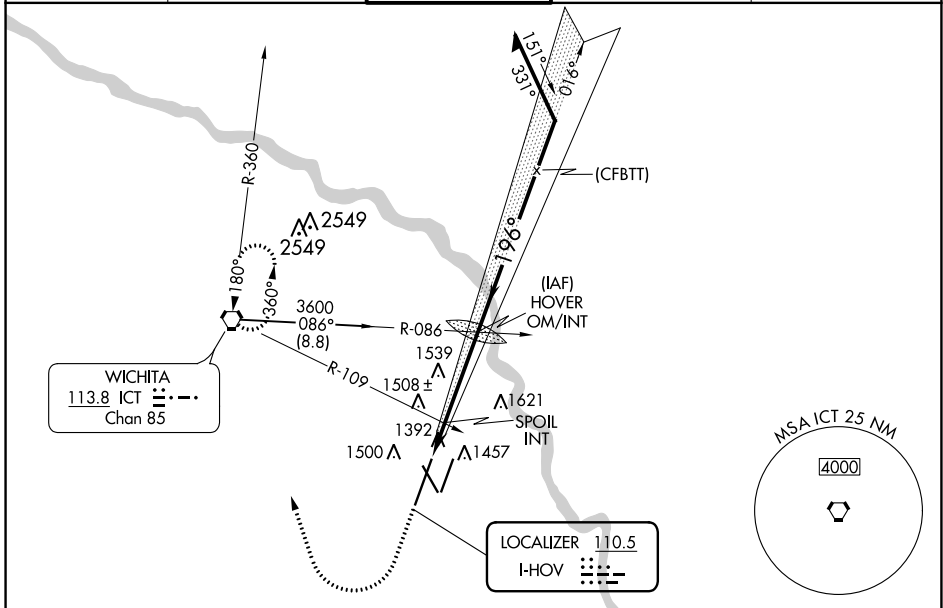
ILS or LOC RWY 19R

WICHITA DWIGHT D EISENHOWER NTL (ICT)

⚠ Simultaneous approach authorized with Rwy 19L. For inoperative MALSR, increase S-ILS 19R# Cat E visibility to RVR 4000, S-LOC 19R Cat E visibility to 1/2 mile, SPOIL FIX minimums: S-LOC 19R Cat D and E visibility to RVR 5000.
RVR 1800 authorized with the use of FD or AP or HUD to DA.

MALSR
 MISSED APPROACH: Climb to 3500 then climbing right turn to 3600 direct ICT VORTAC and hold.

ATIS 125.15	WICHITA APP CON 126.7 353.5	WICHITA TOWER 118.2 257.8	GND CON 121.9 348.6	CLNC DEL 125.7
-----------------------	---------------------------------------	-------------------------------------	-------------------------------	--------------------------



CATEGORY	A	B	C	D	E
S-ILS 19R#	1530/24 200 (200-1/2)				
S-LOC 19R	1820/24 490 (500-1/2)	1820/40 490 (500-3/4)	1820/50 490 (500-1)	1820/60 490 (500-1 1/4)	
CIRCLING	1820-1 487 (500-1)	1980-1 3/4 647 (700-1 1/4)	1980-2 647 (700-2)	2000-2 1/4 667 (700-2 1/4)	
SPOIL FIX MINIMUMS (DUAL VOR RECEIVERS REQUIRED)					
S-LOC 19R	1660/24 330 (400-1/2)		1660/40 330 (400-3/4)		
CIRCLING	1800-1 467 (500-1)	1980-1 3/4 647 (700-1 1/4)	1980-2 647 (700-2)	2000-2 1/4 667 (700-2 1/4)	

NC-2, 11 JUL 2024 to 08 AUG 2024

NC-2, 11 JUL 2024 to 08 AUG 2024