

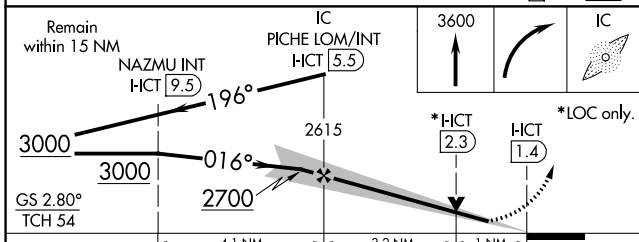
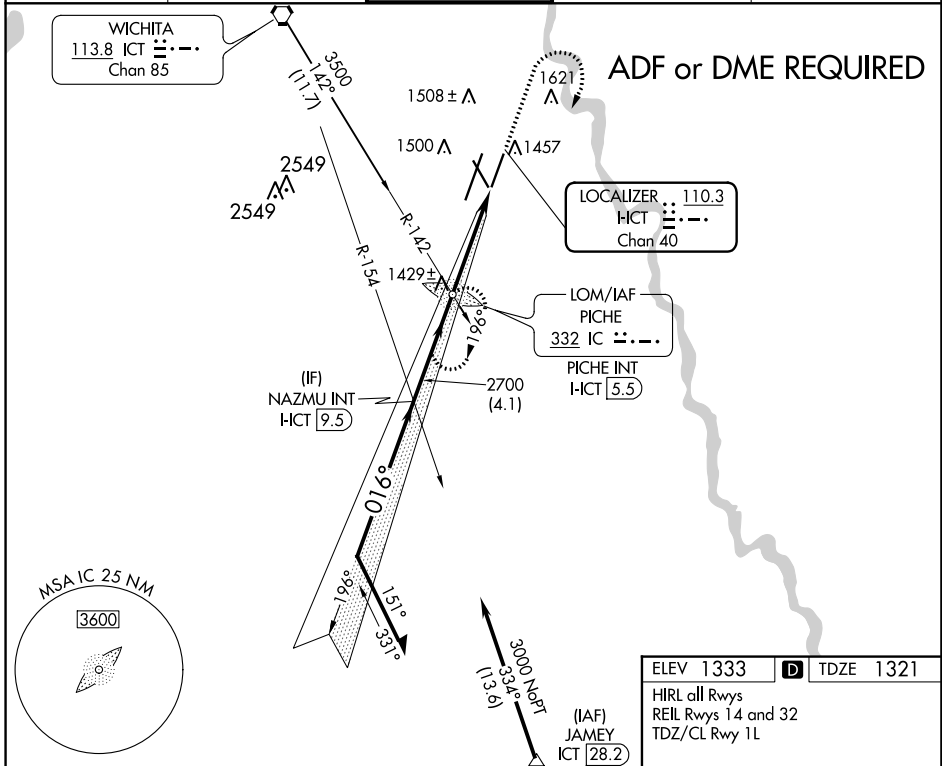
LOC/DME HCT <b>110.3</b> Chan 40	APP CRS <b>016°</b>	Rwy Idg <b>7302</b> TDZE <b>1321</b> Apt Elev <b>1333</b>
--	------------------------	---

# ILS or LOC RWY 1R

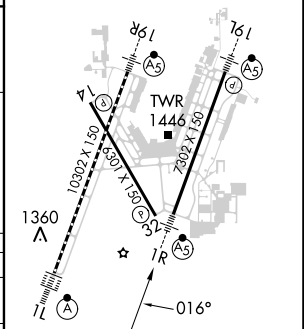
WICHITA DWIGHT D EISENHOWER NTL (ICT)

<p>Simultaneous approach authorized with Rwy 1L. ADF or DME required. #RVR 1800 authorized with the use of FD or AP or HUD to DA.</p>	<p>MALSR</p>	<p>MISSED APPROACH: Climb to 3600 then right turn direct PICHE LOM/INT/HCT 5.5 DME and hold.</p>
---	--------------	--

<p>ATIS <b>125.15</b></p>	<p>WICHITA APP CON <b>126.7 353.5</b></p>	<p>WICHITA TOWER <b>118.2 257.8</b></p>	<p>GND CON <b>121.9 348.6</b></p>	<p>CLNC DEL <b>125.7</b></p>
-------------------------------	---	---	---------------------------------------	----------------------------------



ELEV 1333	D	TDZE 1321
HIRL all Rwys		
REIL Rwys 14 and 32		
TDZ/CL Rwy 1L		



CATEGORY	A	B	C	D	E
S-ILS 1R#	1521/24 200 (200-½)				
S-LOC 1R	1680/24	359 (400-½)	1680/40	359 (400-¾)	
CIRCLING	1800-1	467 (500-1)	1980-1¾ 647 (700-1¾)	1980-2 647 (700-2)	2000-2¼ 667 (700-2¼)

FAF to MAP 4.1 NM					
Knots	60	90	120	150	180
Min:Sec	4:06	2:44	2:03	1:38	1:22

NC-2, 11 JUL 2024 to 08 AUG 2024

NC-2, 11 JUL 2024 to 08 AUG 2024