

WAAS CH 61219 W01A	APP CRS 016°	Rwy Idg 10302 TDZE 1314 Apt Elev 1333
--	------------------------	--

RNAV (GPS) Y RWY 1L

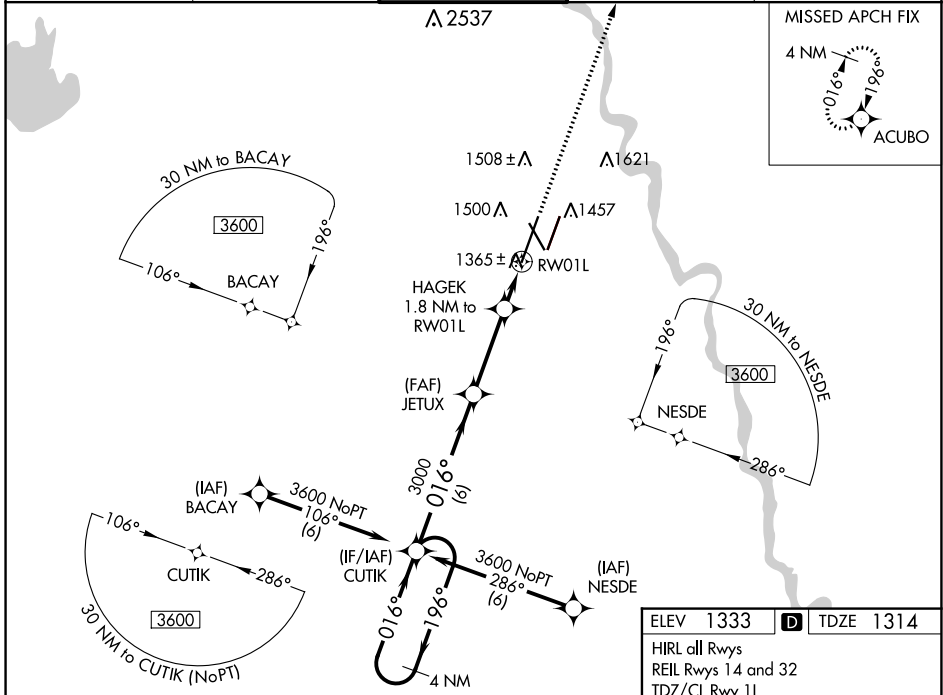
WICHITA DWIGHT D EISENHOWER NTL (ICT)

⚠ Inoperative table does not apply to LNAV Cat D. For uncompensated Baro-VNAV systems, LNAV/VNAV NA below -15°C (5°F) or above 54°C (130°F). For inoperative ALSF-2, increase LNAV Cat C/D visibility to RVR 4500. DME/DME RNP-0.3 NA. Simultaneous approach authorized with ILS or LOC RWY 1R. LNAV procedure NA during simultaneous operations. Use of FD or AP providing RNAV track guidance required during simultaneous operations.

ALSF-2

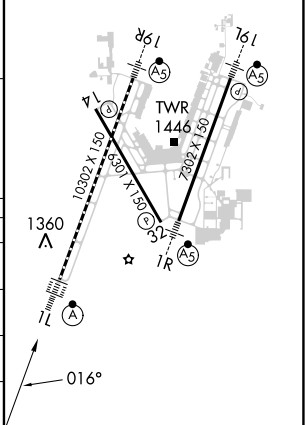
MISSED APPROACH:
Climb to 3600 direct ACUBO and hold.

ATIS 125.15	WICHITA APP CON 126.7 353.5	WICHITA TOWER 118.2 257.8	GND CON 121.9 348.6	CLNC DEL 125.7
-----------------------	---------------------------------------	-------------------------------------	-------------------------------	--------------------------



ELEV 1333	D TDZE 1314
HIRL all Rwys	
REIL Rwys 14 and 32	
TDZ/CL Rwy 1L	

4 NM Holding Pattern 3600 ← 196° → 016° → 3000 GP 3.00° TCH 52	CUTIK	JETUX	HAGEK 1.8 NM to RWY 1L	3600	ACUBO
	6 NM	3.3 NM	1 NM	0.8 NM	
CATEGORY	A	B	C	D	
LPV DA		1514/18	200 (200-½)		
LNAV/VNAV DA		1615/24	301 (300-½)		
LNAV MDA		1620/24	306 (300-½)		
C CIRCLING	1800-1	467 (500-1)	1980-1¾ 647 (700-1¾)	1980-2 647 (700-2)	



NC-2, 11 JUL 2024 to 08 AUG 2024

NC-2, 11 JUL 2024 to 08 AUG 2024