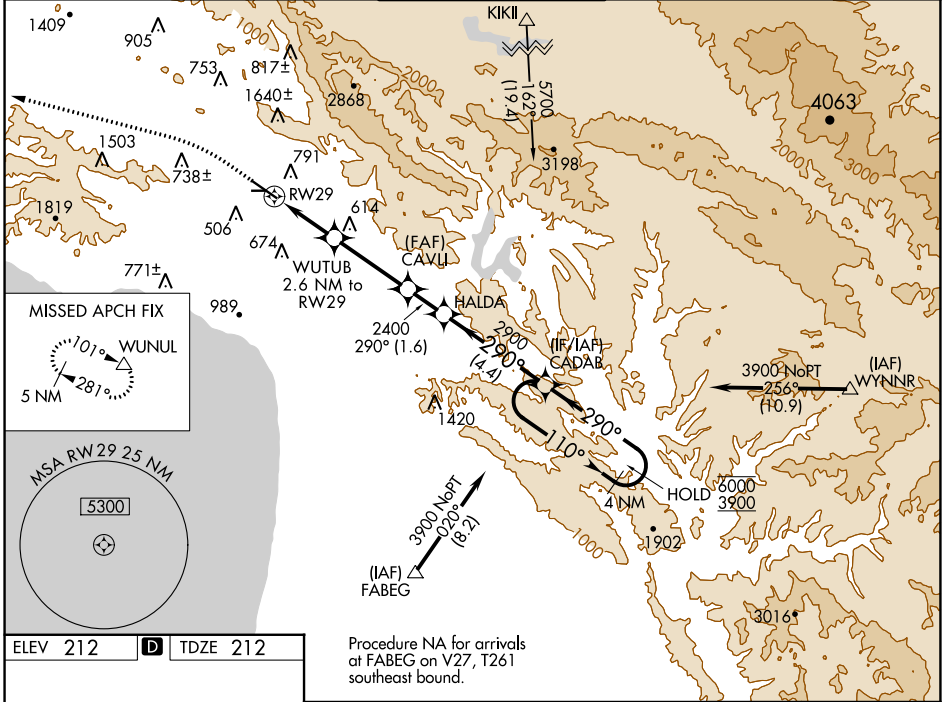


WAAS CH <b>53443</b>	APP CRS <b>290°</b>	Rwy Idg TDZE Apt Elev	<b>5600</b> <b>212</b> <b>212</b>
<b>W29A</b>			

# RNAV (GPS) RWY 29

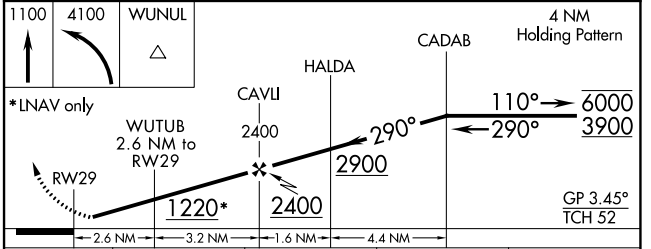
SAN LUIS OBISPO COUNTY RGNL (SBP)

<b>RNP APCH</b> ⚠ Circling to Rwy 25 NA at night. Circling NA north of Rwy 11-29. ⚠ Rwy 29 helicopter visibility reduction below 3/4 SM NA. For uncompensated Baro-VNAV systems, LNAV/VNAV NA below 0° C or above 52° C.		MISSED APPROACH: Climb to 1100 then climbing left turn to 4100 direct WUNUL and hold, continue climb-in-hold to 4100.		
ATIS* <b>120.6</b>	SANTA BARBARA APP CON* <b>127.725 244.575</b>	SAN LUIS TOWER* <b>124.0 (CTAF) 0 379.9</b>	GND CON <b>121.6</b>	UNICOM <b>122.95</b>

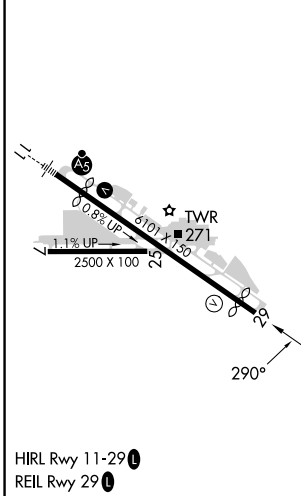


ELEV 212	<b>D</b>	TDZE 212
----------	----------	----------

Procedure NA for arrivals at FABEG on V27, T261 southeast bound.



CATEGORY	A	B	C	D
LPV DA		831-1 <sup>3</sup> / <sub>4</sub>	619 (700-1 <sup>3</sup> / <sub>4</sub> )	
LNAV/VNAV DA		835-1 <sup>3</sup> / <sub>4</sub>	623 (700-1 <sup>3</sup> / <sub>4</sub> )	
LNAV MDA	1000-1 788 (800-1)	1000-1 <sup>1</sup> / <sub>4</sub> 788 (800-1 <sup>1</sup> / <sub>4</sub> )	1000-2 <sup>1</sup> / <sub>2</sub> 788 (800-2 <sup>1</sup> / <sub>2</sub> )	788 (800-2 <sup>1</sup> / <sub>2</sub> )
<b>C</b> CIRCLING	1000-1 788 (800-1)	1220-1 <sup>1</sup> / <sub>2</sub> 1008 (1100-1 <sup>1</sup> / <sub>2</sub> )	1460-3 1248 (1300-3)	1560-3 1348 (1400-3)



SW-3, 11 JUL 2024 to 08 AUG 2024

SW-3, 11 JUL 2024 to 08 AUG 2024