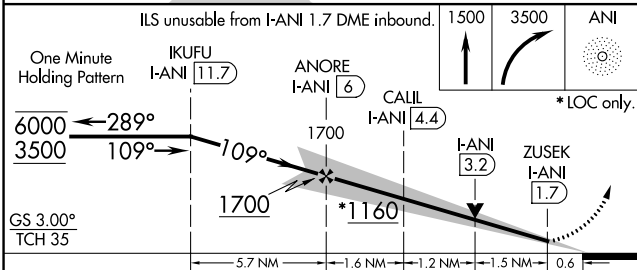
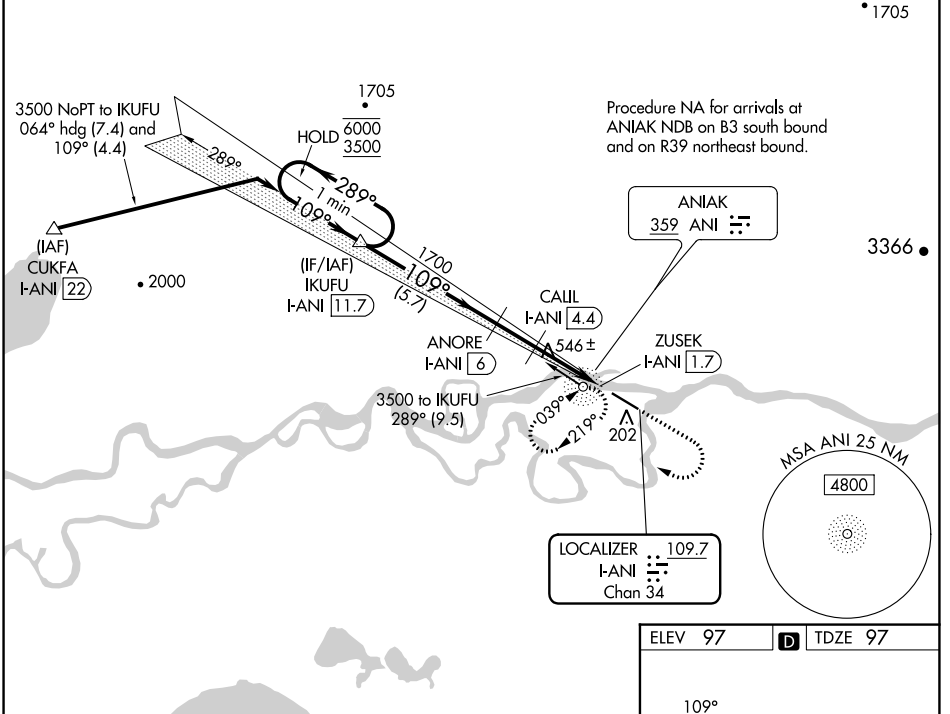


| | | |
|---|------------------------|---|
| LOC/DME I-ANI 109.7 Chan 34 | APP CRS 109° | Rwy Idg 5400 TDZE 97 Apt Elev 97 |
|---|------------------------|---|

ILS or LOC RWY 11

ANIAK (ANI)(PANI)

| | | | |
|--|--|---------------------------|---|
| DME required. | | MALSF | MISSED APPROACH: Climb to 1500 then climbing right turn to 3500 direct ANI NDB and hold, continue climb-in-hold to 3500. (ADF required) |
| <p>⚠ Circling NA north of Rwy 11-29. Rwy 11 helicopter visibility reduction below 3/4 SM NA. Inop table does not apply to S-ILS all Cats.</p> <p>❄ -38°C</p> | | | |
| AWOS-3P 124.3 | ANCHORAGE CENTER 118.15 251.05 | CLNC DEL 118.15 | CTAF 122.10 |



| | |
|----------------|---------|
| ELEV 97 | TDZE 97 |
| | |
| HIRL Rwy 11-29 | |

| CATEGORY | A | B | C | D |
|----------|-----------------------|---|---------------------------|----------------------|
| S-ILS 11 | 347-3/4 250 (300-3/4) | | | |
| S-LOC 11 | 800-3/4 703 (800-3/4) | | 800-1 3/4 703 (800-1 3/4) | |
| CIRCLING | 800-1 703 (800-1) | | 860-2 1/4 763 (800-2 1/4) | 1200-3 1103 (1200-3) |