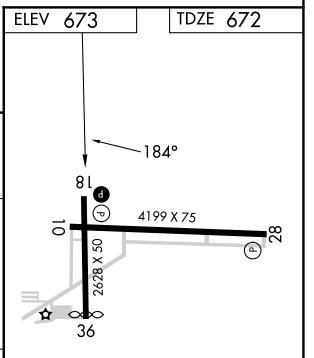
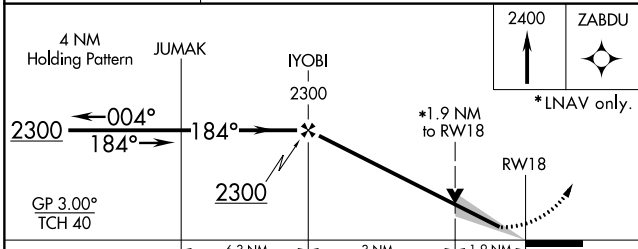
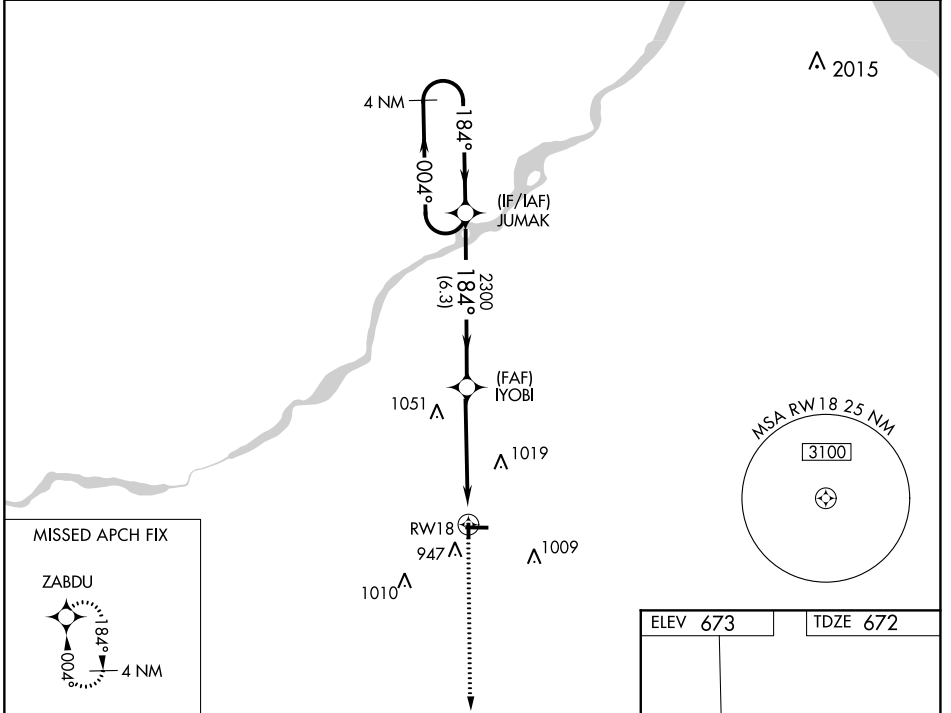


WAAS CH 97403 W18A	APP CRS 184°	Rwy Idg 2628 TDZE 672 Apr Elev 673
--	------------------------	---

RNAV (GPS) RWY 18

WOOD COUNTY (1G~~0~~)

RNP APCH.			MISSED APPROACH: Climb to 2400 direct ZABDU and hold.
<p>▼ Circling Rwy 36 NA at night. VDP NA when using Toledo Express altimeter setting. When local altimeter setting not received, use Toledo Express altimeter setting and increase DA to 957 feet; increase all MDAs 40 feet.</p> <p>▲ NA</p>			
AWOS-3 120.725	TOLEDO APP CON 126.1 317.55	CLNC DEL 125.6	UNICOM 122.975 (CTAF) 0



CATEGORY	A	B	C	D
LPV DA	922-1	250 (300-1)		NA
LNAV MDA	1320-1	648 (700-1)		NA
C CIRCLING	1320-1	647 (700-1)		NA

REIL Rwys 10, 18 and 28 **0**
MIRL Rwys 10-28 and 18-36 **0**

EC-2, 11 JUL 2024 to 08 AUG 2024

EC-2, 11 JUL 2024 to 08 AUG 2024