

# HI-ILS or LOC Z RWY 30


LOC I-MIB <b>109.9</b>	APCH CRS <b>298°</b>	Rwy Ildg <b>13,198</b> TDZE <b>1646</b> Arpt Elev <b>1666</b>
---------------------------	-------------------------	---

[USAF]

MINOT AFB (KMIB)

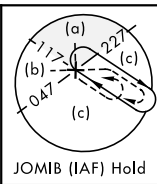
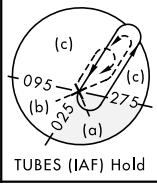
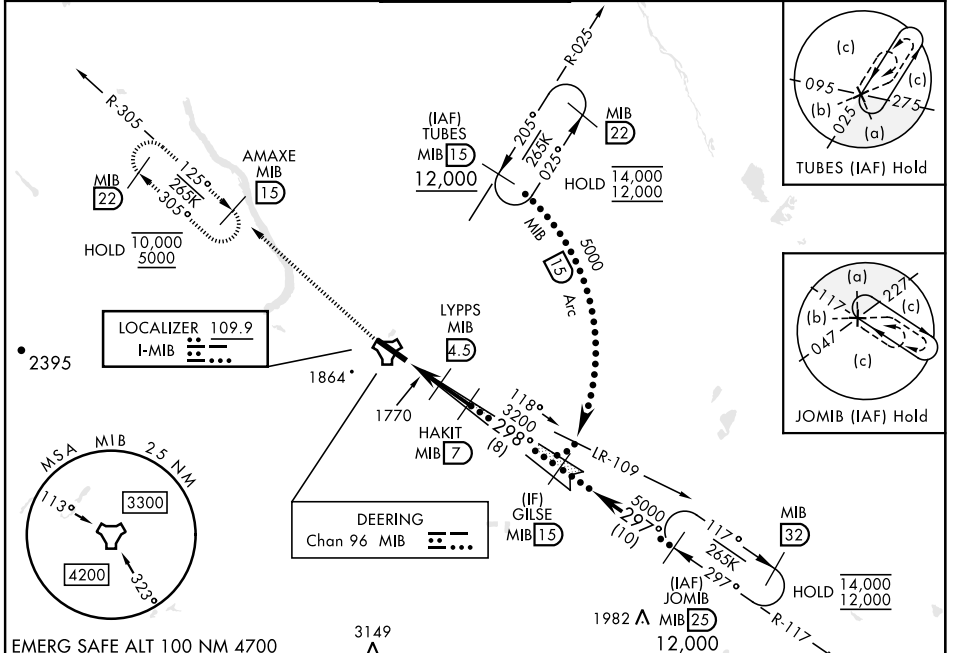
RADAR or DME required.

\* When ALS inop, increase RVR to 40, vis to  $\frac{3}{4}$  mile.  
 \*\* When ALS inop, increase RVR to 55, vis to 1 mile.  
 \*\*\* Circling Not Authorized N of Rwy 12-30.  
 \*\*\*\* When ALS inop, increase vis to  $1\frac{1}{2}$  miles.

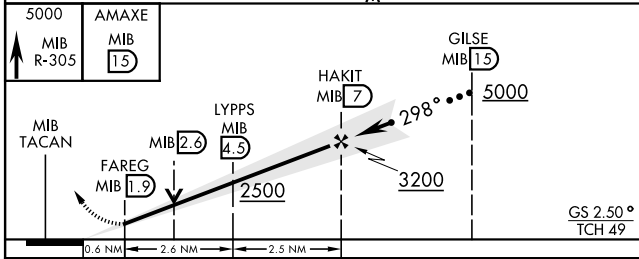
ALSF-1  


MISSED APPROACH: Climb to 5000 via MIB TACAN R-305 direct AMAXE and hold.

ATIS ★ <b>278.8</b>	MINOT APP CON <b>119.6 363.8</b>	MINOT TOWER ★ <b>120.65 253.5</b>	GND CON <b>134.0 275.8</b>	CLNC DEL <b>326.2</b>
------------------------	-------------------------------------	--------------------------------------	-------------------------------	--------------------------

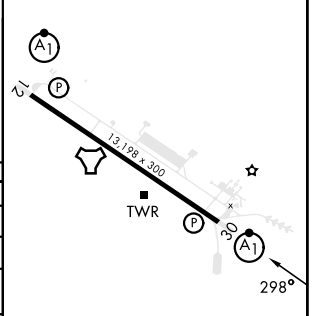


EMERG SAFE ALT 100 NM 4700



ELEV	1666	TDZE	1646
------	------	------	------

CATEGORY	C	D	E
S-ILS 30*	1846/24	200	(200- $\frac{1}{2}$ )
S-LOC 30**	2020/35	374	(400- $\frac{3}{4}$ )
*** CIRCLING	2180-1 $\frac{1}{2}$ 514 (600-1 $\frac{1}{2}$ )	2320-2 654 (700-2)	2320-2 $\frac{1}{4}$ 654 (700-2 $\frac{1}{4}$ )
LOCAL ALTIMETER WITHOUT LAST STEPDOWN FIX			
S-LOC 30****	2140/50	494	(500-1)
*** CIRCLING	2180-1 $\frac{1}{2}$ 514 (600-1 $\frac{1}{2}$ )	2320-2 654 (700-2)	2320-2 $\frac{1}{4}$ 654 (700-2 $\frac{1}{4}$ )



HIRL Rwy 12-30					
FAF to MAP 5.2 NM					
Knots	120	140	160	180	200
Min:Sec	2:36	2:14	1:57	1:44	1:34

# HI-ILS or LOC Z RWY 30

NC-1, 11 JUL 2024 to 08 AUG 2024

NC-1, 11 JUL 2024 to 08 AUG 2024