


LOC I-ANB 111.5	APP CRS 052°	Rwy Idg 7000
		TDZE 595
		Apt Elev 612

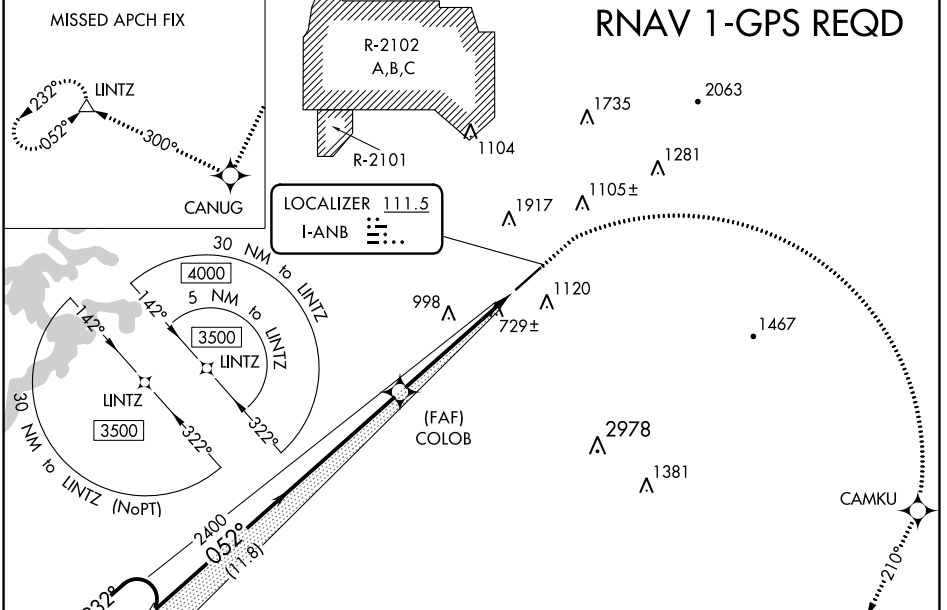
ILS Y or LOC Y RWY 5

ANNISTON RGNL (ANB)

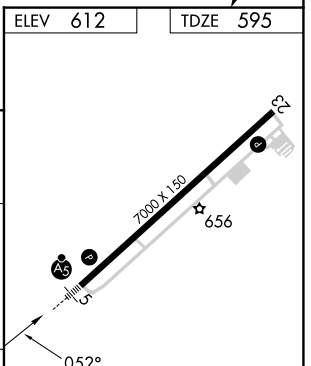
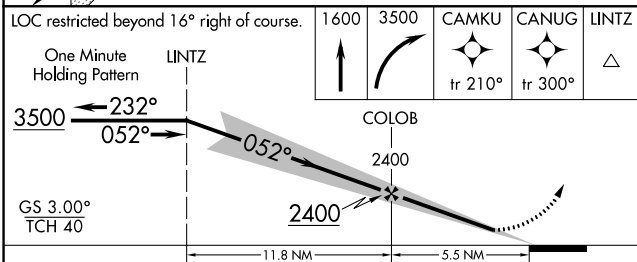
⚠ Circling NA north of Rwy 5-23. RNAV 1-GPS required. For inop ALS, increase S-ILS 5 all Cats visibility to 1 SM. When local altimeter setting not received, use Gadsden altimeter setting: increase DA to 975 and all visibilities ¼ SM; increase all MDAs 80 feet, and S-LOC 5 Cat C/D, and Circling Cat C visibilities ½ SM. For inop ALS when using Gadsden altimeter setting: increase S-ILS 5 all Cats to 1 ¼ SM.

MALSR  MISSED APPROACH: Climb to 1600 then climbing right turn to 3500 direct CAMKU then on track 210° to CANUG and on track 300° to LINTZ and hold.

ASOS 119.675	BIRMINGHAM APP CON 132.15 285.45	CTAF 123.60	UNICOM 123.0
------------------------	--	-----------------------	------------------------





ELEV 612	TDZE 595
----------	----------



CATEGORY	A	B	C	D
S-ILS 5	909-1/2 314 (300-1/2)			
S-LOC 5	1120-1/2	525 (600-1/2)	1120-1	525 (600-1)
C CIRCLING	1420-1	808 (900-1)	1420-2 1/4 808 (900-2 1/4)	1820-3 1208 (1300-3)

FAF to MAP 5.5 NM					
Knots	60	90	120	150	180
Min:Sec	5:30	3:40	2:45	2:12	1:50

REIL Rwy 23 
HIRL Rwy 5-23 

SE-4, 11 JUL 2024 to 08 AUG 2024

SE-4, 11 JUL 2024 to 08 AUG 2024