

COPTER NDB RWY 34

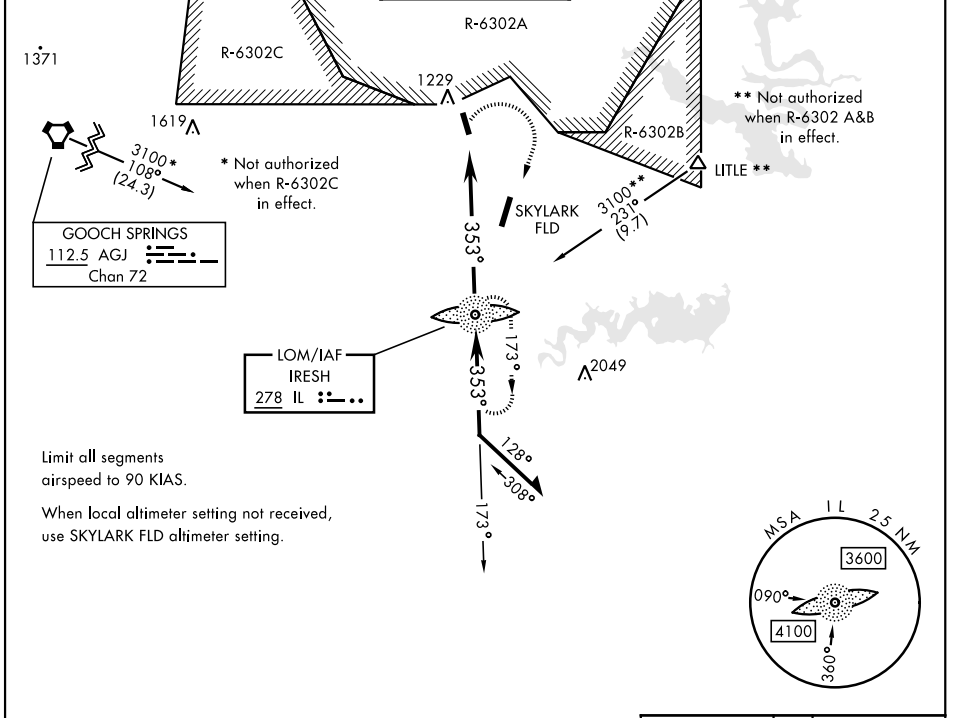
LOM IL 278	APCH CRS 353°	Rwy Ldg TDZE Arprt Elev 910	AL-5031 [USA]	YOAKUM DEFRENN AHP (KHLR)
----------------------	-------------------------	--	---------------	---------------------------

RADAR required for missed approach.

▼ ▲ NA

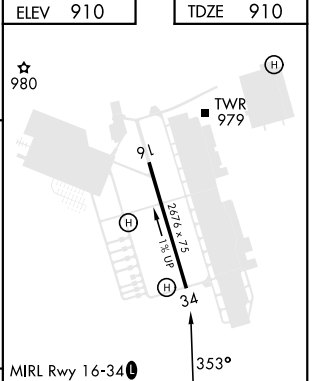
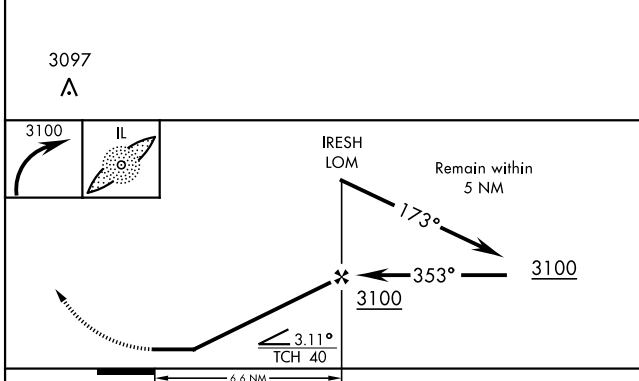
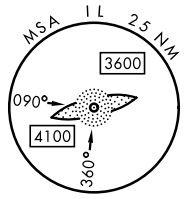
MISSED APPROACH: Climbing right turn to 3100 direct IL LOM and hold.

ATIS★ 138.6	GRAY APP CON 120.075 323.15	TOWER★ 119.650 269.45	GND CON 133.85 225.4	CLNC DEL 225.4
-----------------------	---------------------------------------	---------------------------------	--------------------------------	--------------------------



Limit all segments
airspeed to 90 KIAS.

When local altimeter setting not received,
use SKYLARK FLD altimeter setting.



CATEGORY	COPTER					FAF to MAP 6.6 NM				
S-34	1400-1	490	(500-1)	Knots	45	60	75	90	105	
CIRCLING	1540-1	630	(700-1)	Min:Sec	8:48	6:36	5:17	4:24	3:46	

COPTER NDB RWY 34

SC-3, 11 JUL 2024 to 08 AUG 2024

SC-3, 11 JUL 2024 to 08 AUG 2024