

FORT CAVAZOS, TEXAS

# COPTER RNAV (GPS) RWY 34

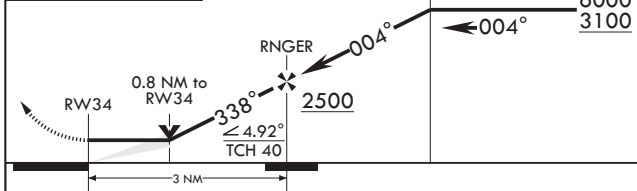
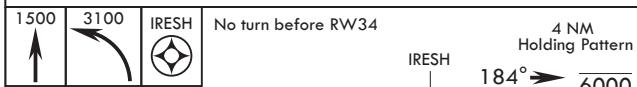
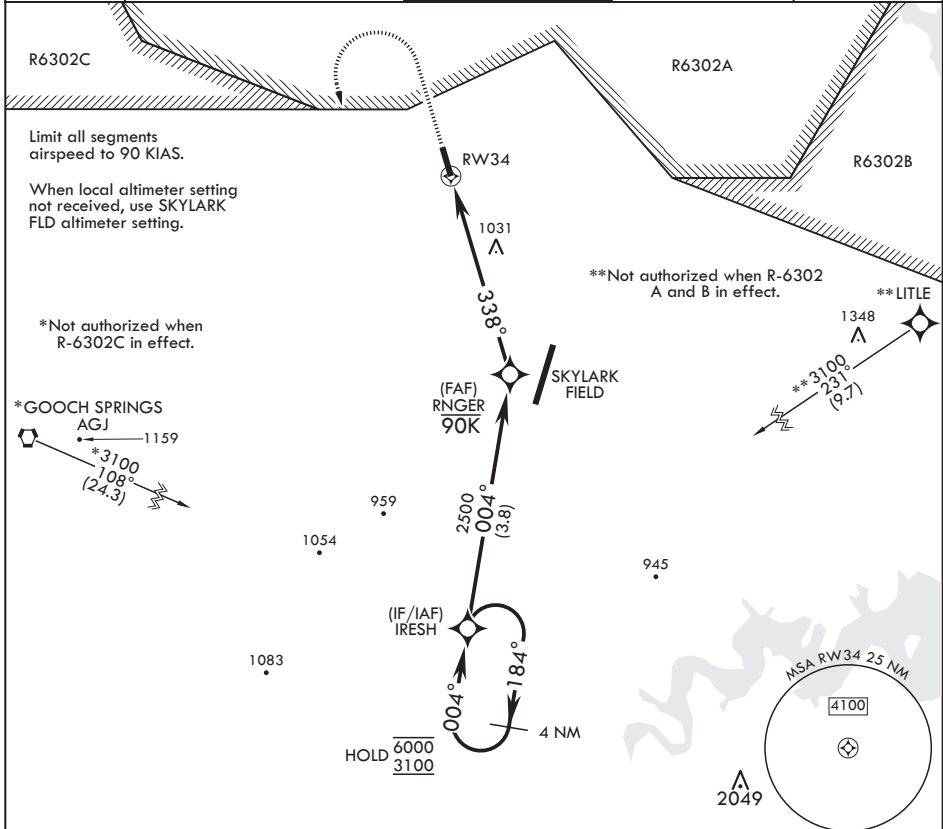
APCH CRS 338°	Rwy Idg 2676
	TDZE 910
	Arprt Elev 910

AL-5031 (USA)

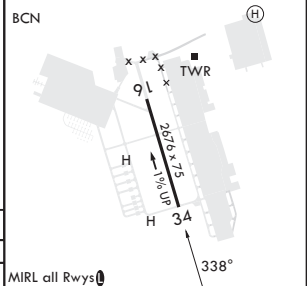
YOAKUM DEFRENN AHP (KHLR)

RNP APCH – GPS	MISSED APPROACH: Climb to 1500 then climbing left turn to 3100 direct IRESH and hold.
RADAR required for missed approach.	
NA	

ATIS * 138.6	GRAY APP CON/DEP CON 120.075 323.15	TOWER * 119.65 @ 269.45	GND CON 133.85 225.4	CLNC DEL 225.4
-----------------	--	----------------------------	-------------------------	-------------------



ELEV 910	TDZE 910
----------	----------



CATEGORY	COPTER		
LNAV MDA	1320-1	410	(500-1)

MIRL all Rwy's

FORT CAVAZOS, TEXAS

31°08'N - 97°43'W

YOAKUM DEFRENN AHP (KHLR)

Amdt 1 05OCT23

# COPTER RNAV (GPS) RWY 34

SC-3, 11 JUL 2024 to 08 AUG 2024

SC-3, 11 JUL 2024 to 08 AUG 2024