

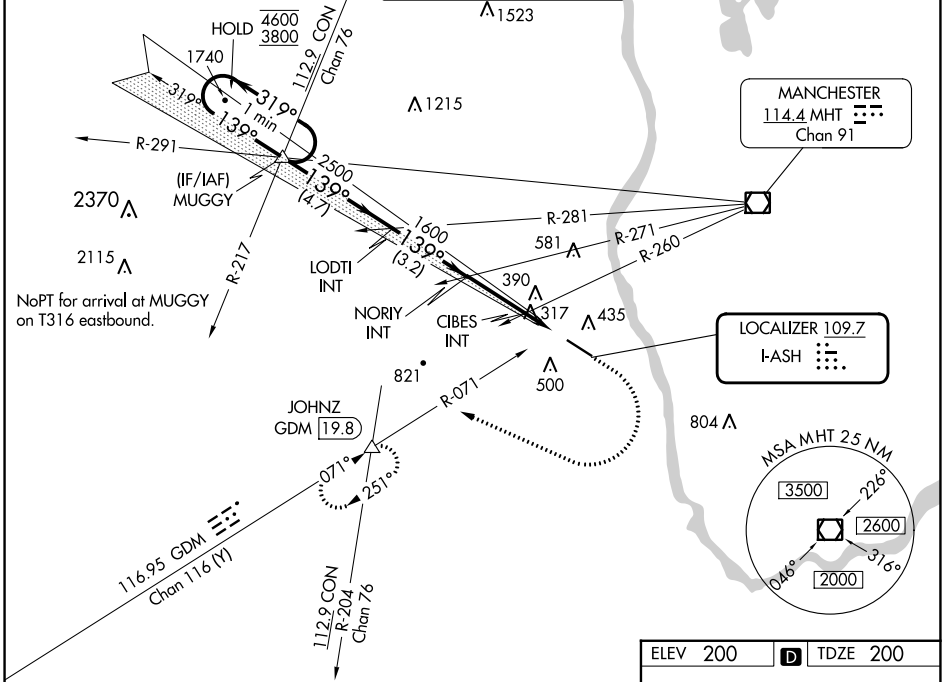
LOC I-ASH <b>109.7</b>	APP CRS <b>139°</b>	Rwy ldg TDZE Apt Elev	<b>5650</b> <b>200</b> <b>200</b>
---------------------------	------------------------	-----------------------------	---

# ILS or LOC RWY 14

BOIRE FLD (ASH)

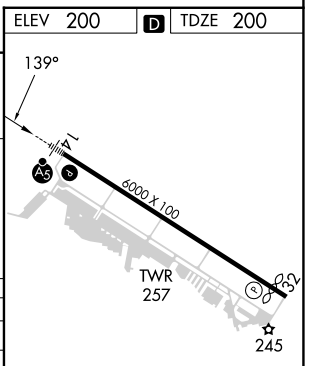
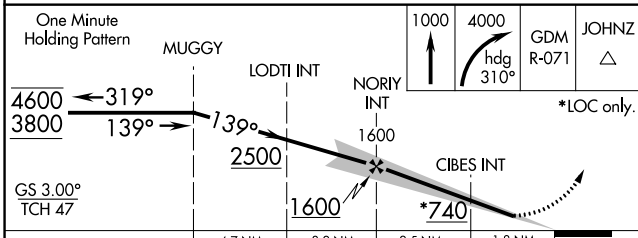
<p>For inop ALS, increase CIBES fix minimums S-LOC 14 Cat C/D visibility to 1 SM.</p>	<p>MALS R</p>	<p>MISSED APPROACH: Climb to 1000 then climbing right turn to 4000 on heading 310° and GDM R-071 to JOHNZ INT/GDM 19.8 DME and hold, continue climb-in-hold to 4000.</p>
		<p>ATIS <b>125.1</b></p>

BOSTON APP CON <b>124.9 269.075</b>	NASHUA TOWER ★ <b>133.2</b> (CTAF)	GND CON <b>121.8</b>	CLNC DEL <b>121.8</b>
--	---------------------------------------	-------------------------	--------------------------



NE-1, 11 JUL 2024 to 08 AUG 2024

NE-1, 11 JUL 2024 to 08 AUG 2024



CATEGORY	A	B	C	D
S-ILS 14	400-½ 200 (200-½)			
S-LOC 14	740-½	540 (600-½)	740-1	540 (600-1)
CIRCLING	820-1 620 (700-1)	840-1 640 (700-1)	900-2 700 (700-2)	1000-2½ 800 (800-2½)
CIBES FIX MINIMUMS (DUAL VOR RECEIVERS REQUIRED)				
S-LOC 14	580-½	380 (400-½)	580-¾	380 (400-¾)
CIRCLING	820-1 620 (700-1)	840-1 640 (700-1)	900-2 700 (700-2)	1000-2½ 800 (800-2½)

ELEV 200		TDZE 200			
HIRL Rwy 14-32					
REIL Rwy 32					
FAF to MAP 4.3 NM					
Knots	60	90	120	150	180
Min:Sec	4:18	2:52	2:09	1:43	1:26