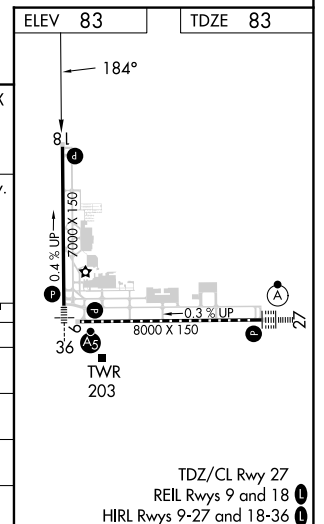
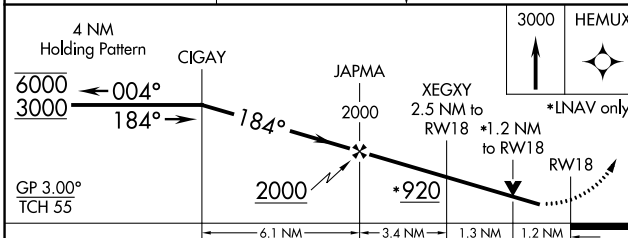
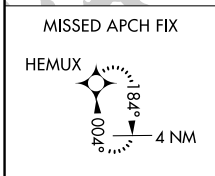
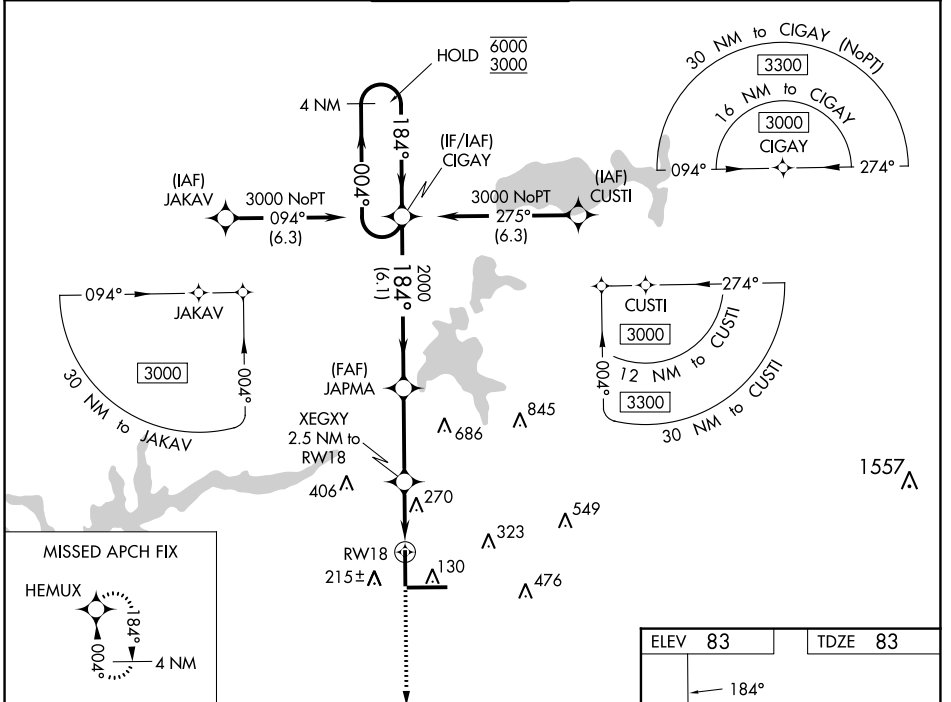


|  |                        |   |             |
|--|------------------------|---|-------------|
| WAAS<br>CH <b>65600</b><br><b>W18A</b> | APP CRS<br><b>184°</b> | Rwy Idg<br>TDZE <b>83</b><br>Apt Elev <b>83</b> | <b>7000</b> |
|--|------------------------|---|-------------|

# RNAV (GPS) RWY 18

TALLAHASSEE INTL (TLH)

|  |  |   |  |                     |  |             |  |              |  |         |  |
|--|--|---|--|---------------------|--|-------------|--|--------------|--|---------|--|
| RNP APCH.  |  | TALLAHASSEE APP CON ★                                 |  | TALLAHASSEE TOWER ★ |  | GND CON     |  | CLNC DEL     |  | UNICOM  |  |
| ▼ Rwy 18 helicopter visibility reduction below 3/4 SM NA.<br>▲ For uncompensated Baro-VNAV systems, LNAV/VNAV NA below -5°C or above 54°C. |  | MISSED APPROACH: Climb to 3000 direct HEMUX and hold. |  | 118.7 (CTAF) 257.8  |  | 121.9 348.6 |  | 126.65 275.8 |  | 123.075 |  |
| ATIS   |  | TALLAHASSEE APP CON ★                                 |  | TALLAHASSEE TOWER ★ |  | GND CON     |  | CLNC DEL     |  | UNICOM  |  |
| 119.45 239.25  |  | 135.8 317.4   |  | 118.7 (CTAF) 257.8  |  | 121.9 348.6 |  | 126.65 275.8 |  | 123.075 |  |



| CATEGORY     | A                    | B                    | C                            | D                            |
|--------------|----------------------|----------------------|------------------------------|------------------------------|
| LPV DA       |                      | 333-3/4              | 250 (300-3/4)                |                              |
| LNAV/VNAV DA |                      | 537-1 1/2            | 454 (500-1 1/2)              |                              |
| LNAV MDA     | 520-1                | 437 (500-1)          | 520-1 1/4                    | 437 (500-1 1/4)              |
| CIRCLING     | 580-1<br>497 (500-1) | 600-1<br>517 (600-1) | 640-1 1/2<br>557 (600-1 1/2) | 800-2 1/4<br>717 (800-2 1/4) |

SE-3, 11 JUL 2024 to 08 AUG 2024

SE-3, 11 JUL 2024 to 08 AUG 2024

TDZ/CL Rwy 27  
REIL Rwys 9 and 18  
HIRL Rwys 9-27 and 18-36