

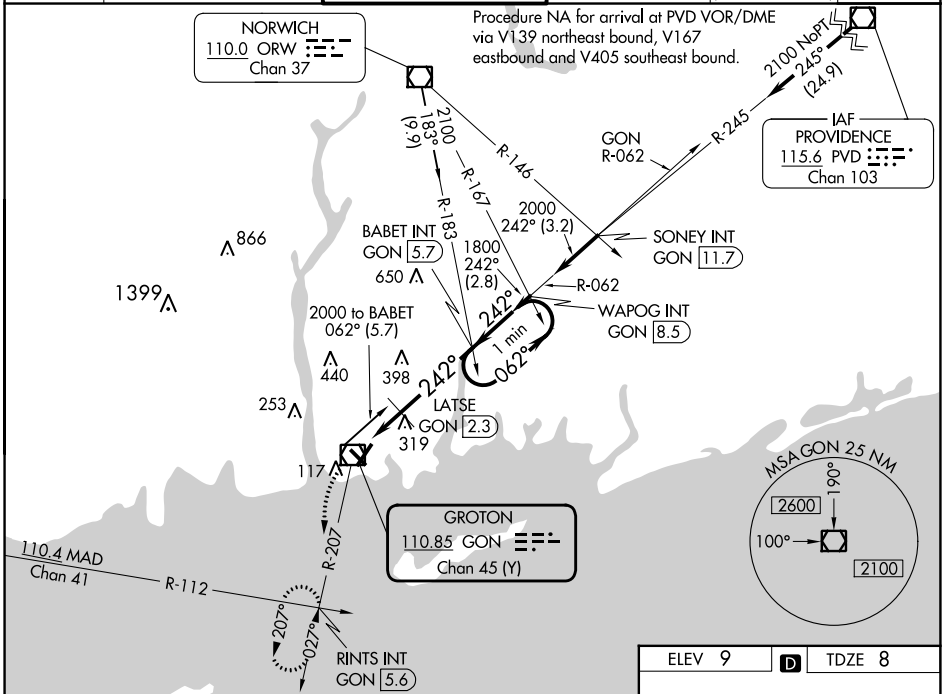
VOR/DME GON 110.85 Chan 45 (Y)	APP CRS 242°	Rwy Idg TDZE Apt Elev	5000 8 9
---	------------------------	-----------------------------	-------------------------------------

VOR RWY 23

GROTON-NEW LONDON (GON)

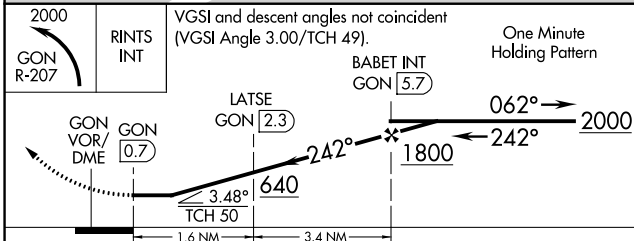
⚠ Circling Rwy 15 NA at night.
⚠ Rwy 23 helicopter visibility reduction below 1 SM NA.
 MISSED APPROACH: Climbing left turn to 2000 via GON R-207 to RINTS INT/GON 5.6 DME and hold.

ATIS 127.0	PROVIDENCE APP CON * 125.75 319.2	GROTON TOWER * 125.6 (CTAF) 236.775	GND CON 121.65 236.775	CLNC DEL 119.85 (when twr closed)	CLNC DEL 121.65
----------------------	---	---	----------------------------------	--	---------------------------



NE-1, 11 JUL 2024 to 08 AUG 2024

NE-1, 11 JUL 2024 to 08 AUG 2024



CATEGORY	A	B	C	D
S-23	640-1	632 (700-1)	640-1 3/4	632 (700-1 3/4)
CIRCLING	640-1	631 (700-1)	700-2 691 (700-2)	840-2 3/4 831 (900-2 3/4)
LATSE FIX MINIMUMS				
S-23	580-1	572 (600-1)	580-1 5/8	572 (600-1 5/8)
CIRCLING	580-1 571 (600-1)	620-1 611 (700-1)	700-2 691 (700-2)	840-2 3/4 831 (900-2 3/4)

ELEV 9	D	TDZE 8
--------	----------	--------

TWR 69
5000 X 150

REIL Rwy 23 and 33
 HIRL Rwy 5-23 and 15-33
 FAF to MAP 5 NM

Knots	60	90	120	150	180
Min:Sec	5:00	3:20	2:30	2:00	1:40