

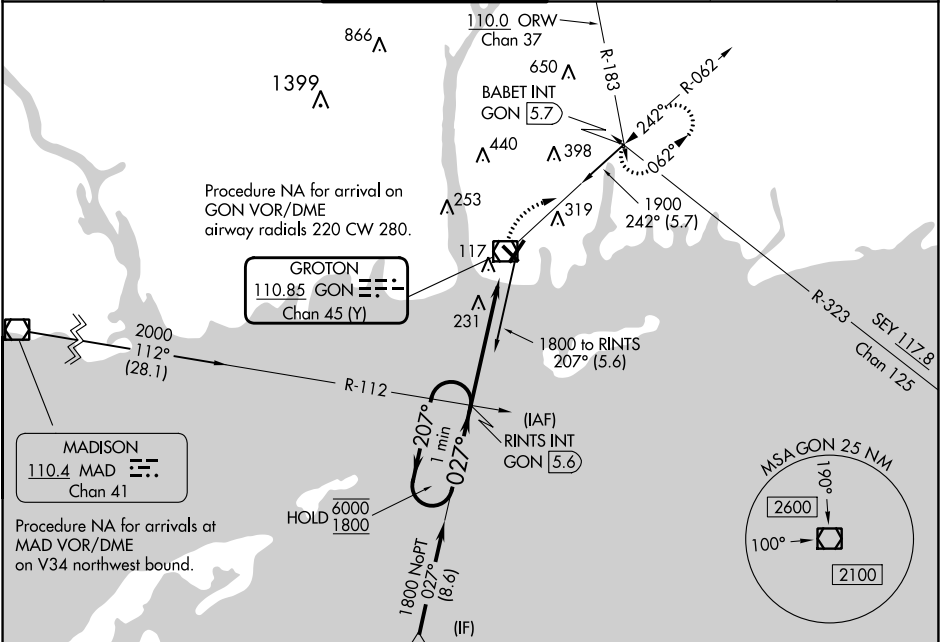
VOR/DME GON 110.85 Chan 45 (Y)	APP CRS 027°	Rwy Idg 5000 TDZE 8 Apt Elev 9
---	------------------------	---

VOR RWY 5

GROTON-NEW LONDON (GON)

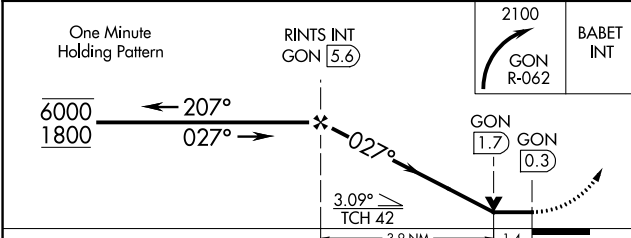
<p>⚠ Circling Rwy 15 NA at night. ⚠ For inop ALS, increase S-5 Cat C/D visibility to 1 3/8.</p>	<p>MALS AS</p>	<p>MISSED APPROACH: Climbing right turn to 2100 on GON R-062 to BABET INT/GON 5.7 DME and hold, continue climb-in-hold to 2100.</p>
---	---------------------------	--

<p>ATIS 127.0</p>	<p>PROVIDENCE APP CON ★ 125.75 319.2</p>	<p>GROTON TOWER ★ 125.6 (CTAF) 0 236.775</p>	<p>GND CON 121.65 236.775</p>	<p>CLNC DEL 119.85 (when twr closed)</p>	<p>CLNC DEL 121.65</p>
------------------------------	---	---	--	---	-----------------------------------



NE-1, 11 JUL 2024 to 08 AUG 2024

NE-1, 11 JUL 2024 to 08 AUG 2024



ELEV 9	D	TDZE 8
--------	---	--------

REIL Rwy 23 and 33
HIRL Rwy 5-23 and 15-33

FAF to MAP 5.4 NM					
Knots	60	90	120	150	180
Min:Sec	5:24	3:36	2:42	2:10	1:48