

WAAS CH <b>93511</b> <b>W02A</b>	APP CRS <b>023°</b>	Rwy Idg <b>6005</b> TDZE <b>433</b> Apt Elev <b>433</b>
--	------------------------	---

# RNAV (GPS) RWY 2

MC KELLAR-SIPES RGNL (MKL)

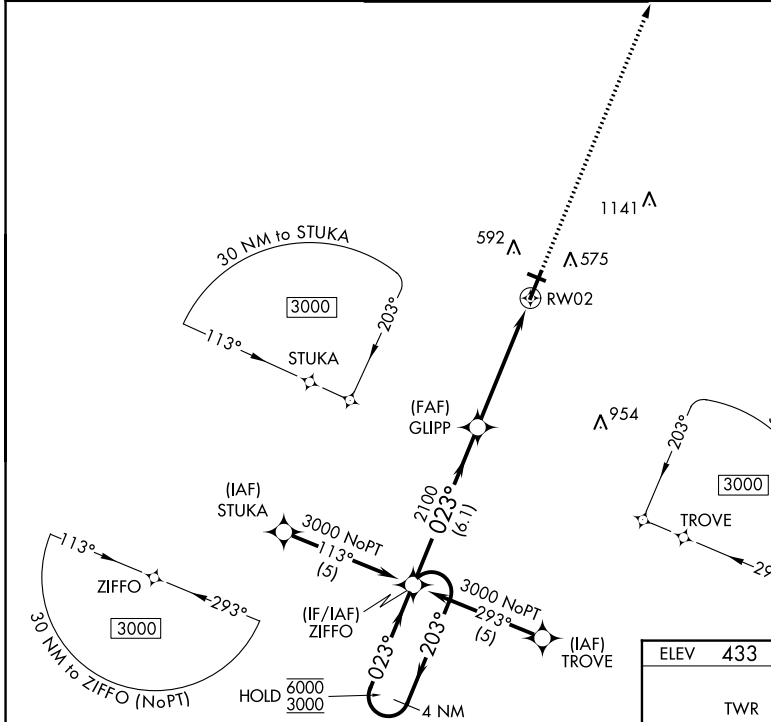
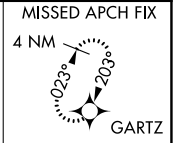
RNP APCH - GPS.

▼ For uncompensated Baro-VNAV systems, LNAV/VNAV NA below -15°C or above 48°C.  
▲ For inop ALS, increase visibility LNAV Cats A/B to 1 SM, and Cats C/D to 1 ½ SM.

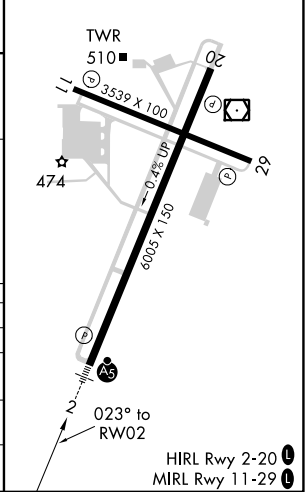
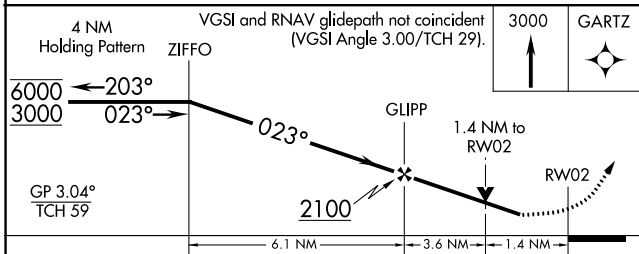
MALSR

MISSED APPROACH: Climb to 3000 direct GARTZ and hold.

ASOS <b>119.325</b>	MEMPHIS CENTER <b>134.65 316.15</b>	JACKSON TOWER ★ <b>127.15 (CTAF) 0 249.95</b>	GND CON <b>120.9</b>	UNICOM <b>122.95</b>
------------------------	--	--	-------------------------	-------------------------



ELEV 433	TDZE 433
----------	----------



CATEGORY	A	B	C	D
LPV DA		772-¾	339 (400-¾)	
LNAV/VNAV DA		886-⅞	453 (500-⅞)	
LNAV MDA	900-¾ 467 (500-¾)		900-1 467 (500-1)	
CIRCLING	900-1 467 (500-1)	920-1 487 (500-1)	960-1½ 527 (600-1½)	1080-2 647 (700-2)

SE-1, 11 JUL 2024 to 08 AUG 2024

SE-1, 11 JUL 2024 to 08 AUG 2024