

# TACAN Y RWY 32L

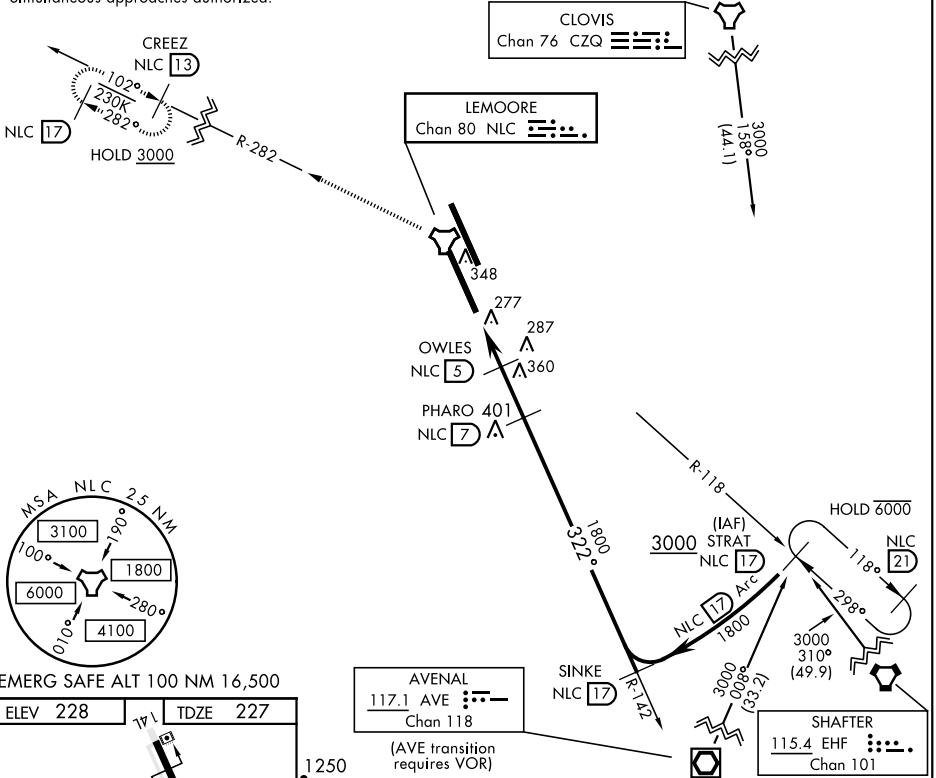
TACAN Chan <b>80</b>	APCH CRS <b>322°</b>	Rwy ldg TDZE Arprt Elev <b>13,501</b> <b>227</b> <b>228</b>
-------------------------	-------------------------	--

AL-5067 [USN]

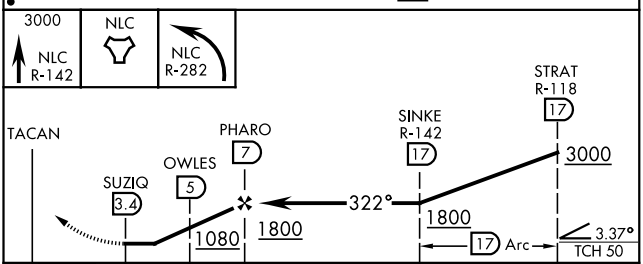
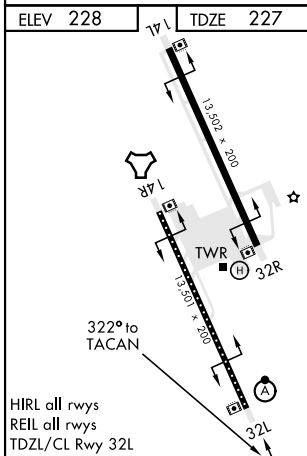
LEMOORE NAS (REEVES FIELD) (KNLC)

<p>▼ *When ALS inop, increase vis to 1 mile.</p>		<p>ALSF-2 A</p>	<p>MISSED APPROACH: Climb to 3000 via R-142 to NLC TACAN, then via R-282 to CREEZ and hold.</p>		
<p>ATIS ★ <b>121.575 327.15</b></p>	<p>APP CON <b>124.1 269.025 (N)</b> <b>118.15 269.025 (S)</b></p>	<p>TOWER ★ <b>128.3 340.2</b></p>	<p>GND CON <b>121.65 305.2</b></p>	<p>CLNC DEL <b>124.1 371.9</b></p>	<p>ASR/PAR</p>

Simultaneous approaches authorized.



EMERG SAFE ALT 100 NM 16,500



CATEGORY	A	B	C	D
S-32L*	580-1/2	353	(400-1/2)	
CIRCLING	680-1 452 (500-1)		700-1 1/2 472 (500-1 1/2)	780-2 552 (600-2)

# TACAN Y RWY 32L

SW-2, 11 JUL 2024 to 08 AUG 2024

SW-2, 11 JUL 2024 to 08 AUG 2024