

FORT JOHNSON, LOUISIANA

# RNAV (GPS) RWY 16

APCH CRS	Rwy ldg	3913
158°	TDZE	328
	Arprt Elev	330

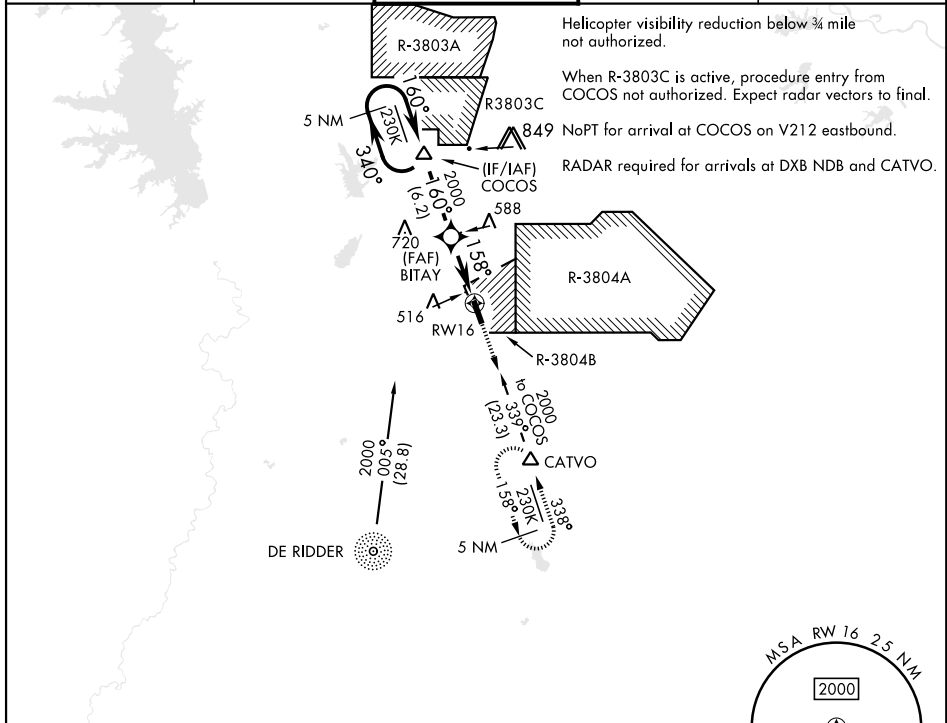
[USA]

MAKS AAF (KPOE)

RNP APCH - GPS

MISSED APPROACH: Climb to 2000 direct CATVO and hold.

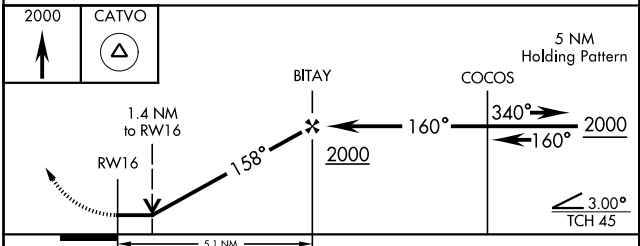
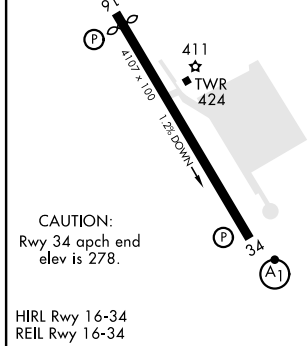
ATIS <b>134.85 282.2</b>	APP CON <b>123.7 261.3</b>	TOWER★ <b>119.0 (CTAF) 257.75</b>	GND CON <b>121.8 239.25</b>	ASR/PAR
-----------------------------	-------------------------------	--------------------------------------	--------------------------------	---------



SC-4, 11 JUL 2024 to 08 AUG 2024

SC-4, 11 JUL 2024 to 08 AUG 2024

ELEV	330	TDZE	328
		Rwy 16 ldg	3913'



CATEGORY	A	B	C	D
LNVA MDA	800-1	472 (500-1)	800-1 3/8 472 (500-1 3/8)	
CIRCLING	880-1	550 (600-1)	880-1 1/2 550 (600-1 1/2)	940-2 610 (700-2)

FORT JOHNSON, LOUISIANA  
Amdt 2 05OCT23

31° 03' N-93° 11' W

MAKS AAF (KPOE)

# RNAV (GPS) RWY 16