

# AIRPORT DIAGRAM

AL-5100 (FAA)

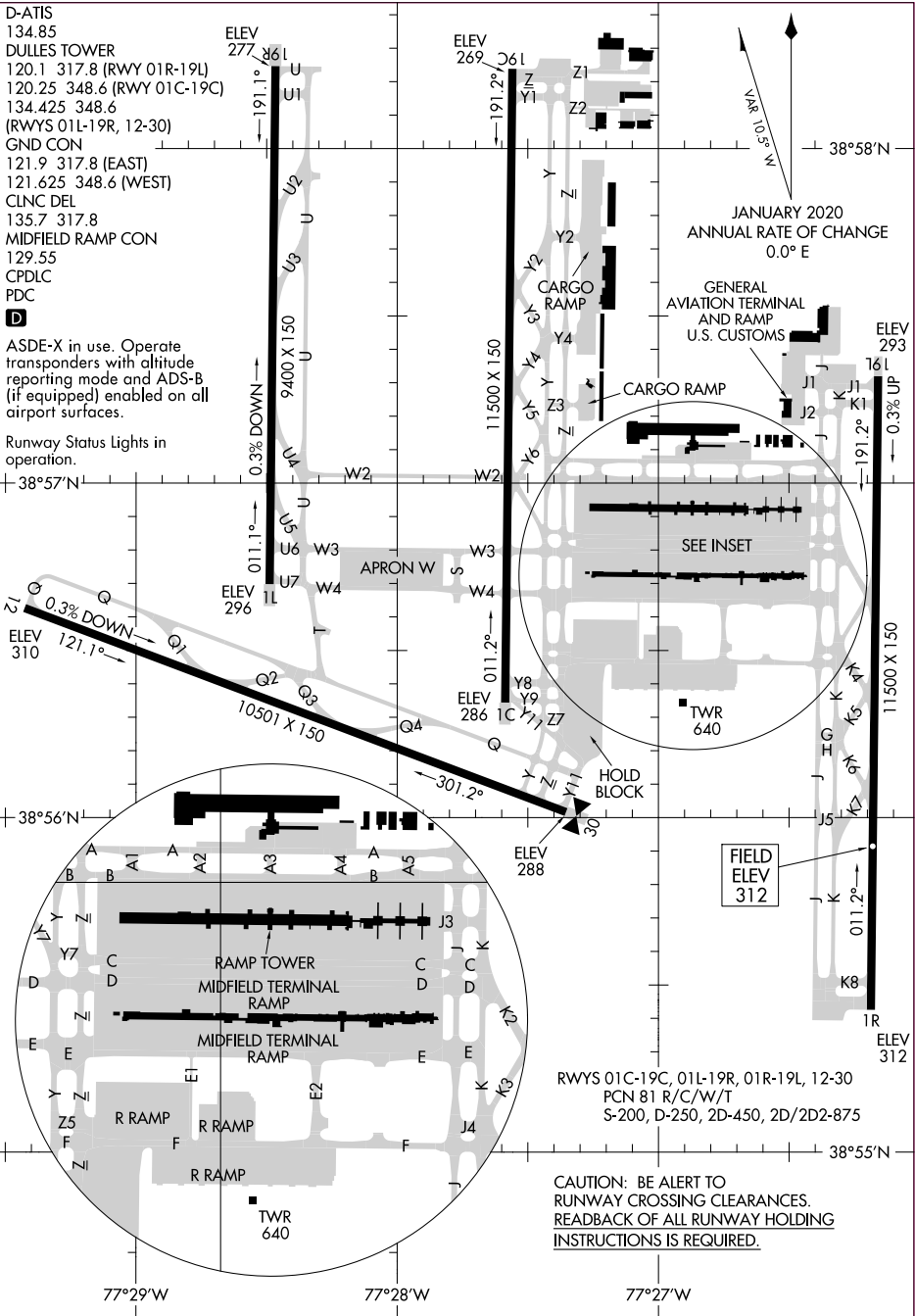
## WASHINGTON DULLES INTL (IAD)

WASHINGTON, DC

D-ATIS  
 134.85  
 DULLES TOWER  
 120.1 317.8 (RWY 01R-19L)  
 120.25 348.6 (RWY 01C-19C)  
 134.425 348.6  
 (RWYS 01L-19R, 12-30)  
 GND CON  
 121.9 317.8 (EAST)  
 121.625 348.6 (WEST)  
 CLNC DEL  
 135.7 317.8  
 MIDFIELD RAMP CON  
 129.55  
 CPDLC  
 PDC

**D**  
 ASDE-X in use. Operate transponders with altitude reporting mode and ADS-B (if equipped) enabled on all airport surfaces.

Runway Status Lights in operation.



JANUARY 2020  
 ANNUAL RATE OF CHANGE  
 0.0° E

GENERAL AVIATION TERMINAL AND RAMP U.S. CUSTOMS

SEE INSET

FIELD ELEV 312

RWYS 01C-19C, 01L-19R, 01R-19L, 12-30  
 PCN 81 R/C/W/T  
 S-200, D-250, 2D-450, 2D/2D2-875

CAUTION: BE ALERT TO RUNWAY CROSSING CLEARANCES.  
READBACK OF ALL RUNWAY HOLDING INSTRUCTIONS IS REQUIRED.

NE-3, 11 JUL 2024 to 08 AUG 2024

NE-3, 11 JUL 2024 to 08 AUG 2024

# AIRPORT DIAGRAM

## WASHINGTON DULLES INTL (IAD)

WASHINGTON, DC