

LOC/DME I-SGC 110.1 Chan 38	APP CRS 191°	Rwy ldg 11500 TDZE 302 Apt Elev 312
---	------------------------	--

ILS RWY 19L (SA CAT II)

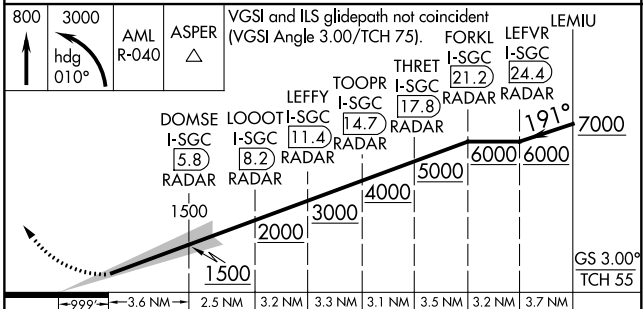
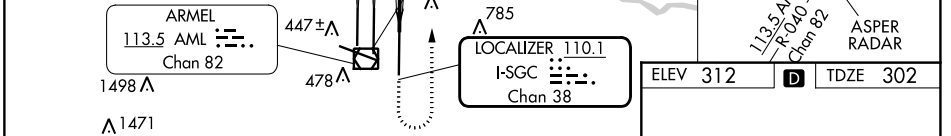
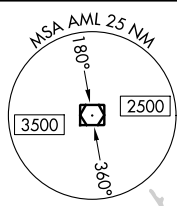
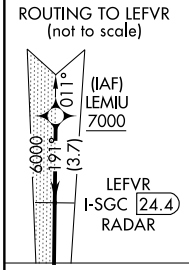
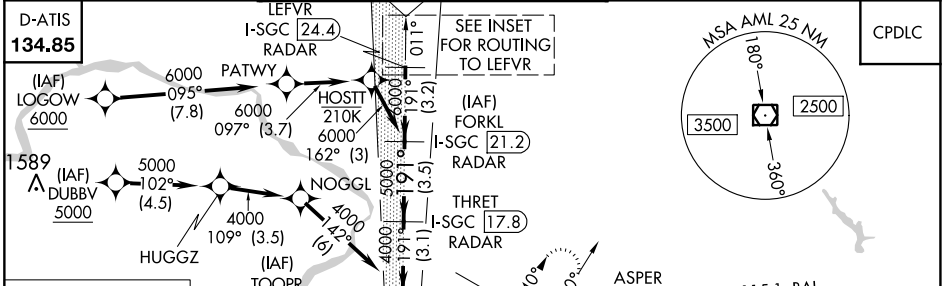
WASHINGTON DULLES INTL (IAD)

RNP APCH - GPS. From LOGOW, or DUBBV, or LEMIU.
DME or RADAR required. RADAR required for procedure entry at LEMIU.
Simultaneous approach authorized.
Requires specific OPSPEC, MSPEC, or LOA approval.

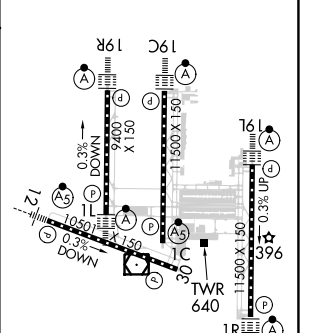


MISSED APPROACH: Climb to 800 then climbing left turn to 3000 on heading 010° and on AML VOR/DME R-040 to ASPER INT/AML 14.7 DME and hold.

POTOMAC APP CON		DULLES TOWER		GND CON	CLNC DEL
120.45	306.925 (241°-330°)	120.1	317.8 (Rwys 1R/19L)	121.9 317.8 (EAST)	135.7 317.8
128.525	306.925 (091°-240°)	120.25	348.6 (Rwy 1C/19C)	121.625 348.6 (WEST)	
126.1	338.25 (331°-090°)	134.425	348.6 (Rwys 1L/19R and 12/30)		



ELEV 312	TDZE 302
----------	----------



800	3000	AML R-040	ASPER	VCSI and ILS glidepath not coincident (VCSI Angle 3.00/TCH 75).	FORKL	LEFVR	LEMIU	
↑	hdg 010°							
DOMSE I-SGC 5.8	LOOOT I-SGC 8.2	LEFFY I-SGC 11.4	TOOPR I-SGC 14.7	THRET I-SGC 17.8	FORKL I-SGC 21.2	LEFVR I-SGC 24.4		
RADAR	RADAR	RADAR	RADAR	RADAR	RADAR	RADAR		
1500	2000	3000	4000	5000	6000	6000	7000	
GS 3.00°							TCH 55	
999	3.6 NM	2.5 NM	3.2 NM	3.3 NM	3.1 NM	3.5 NM	3.2 NM	3.7 NM
CATEGORY	A		B		C		D	
S-ILS 19L	RA 100/12 100 DA 402							

SA CATEGORY II ILS - SPECIAL AIRCREW & AIRCRAFT CERTIFICATION REQUIRED

TDZ/CL Rwys 1C, 1L, 1R, 12, 19C and 19R
REIL Rwy 30
HIRL all Rwys

NE-3, 11 JUL 2024 to 08 AUG 2024

NE-3, 11 JUL 2024 to 08 AUG 2024