

| | | |
|--|------------------------|---|
| LOC/DME I-HSU 110.75 Chan 44 (Y) | APP CRS 191° | Rwy Idg 9400 TDZE 278 Apt Elev 312 |
|--|------------------------|---|

ILS RWY 19R (CAT II & III)

WASHINGTON DULLES INTL (IAD)

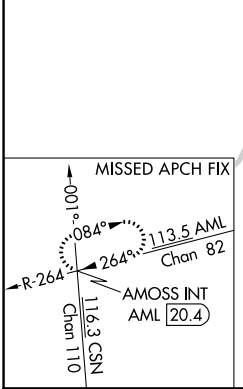
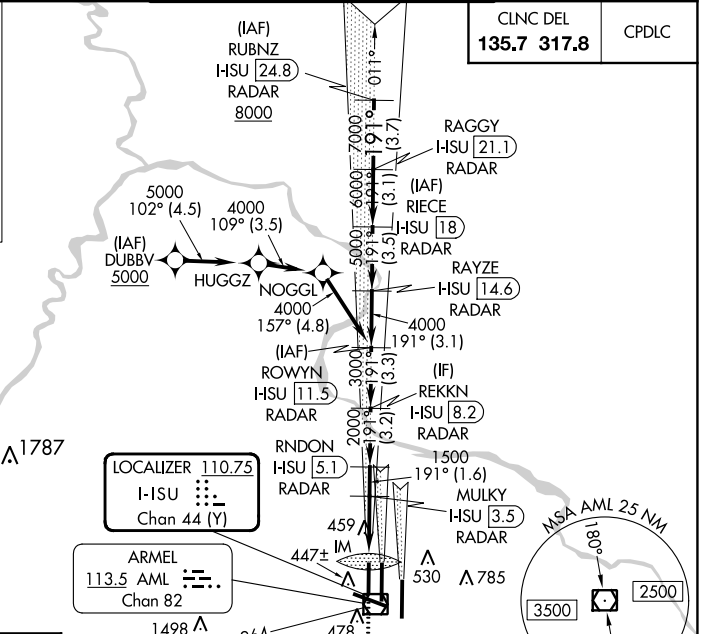
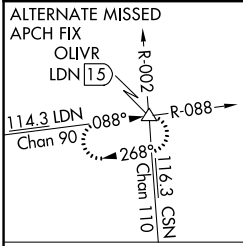
RNP APCH-GPS. From DUBBV.
DME or RADAR required. RADAR required for procedure entry at RUBNZ.
Simultaneous approach authorized.

ALSIF-2
MISSED APPROACH: Climb to 800 then climbing right turn to 3000 on heading 280° and AML VOR/DME R-264 to AMOSS INT/AML 20.4 DME and hold.

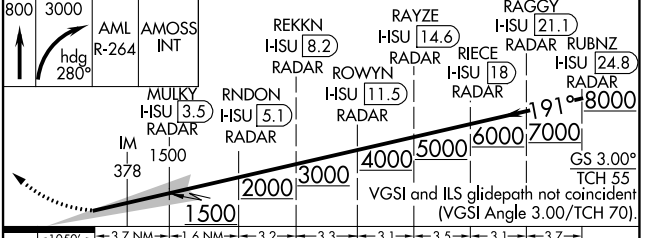
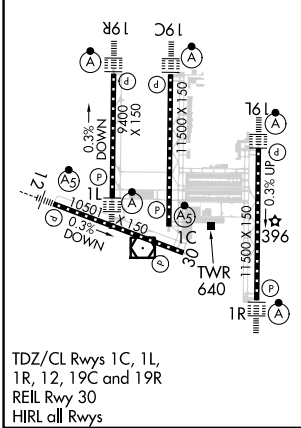
| | |
|-------------------------|---|
| D-ATIS 134.85 | POTOMAC APP CON 120.45 306.925 (241°-330°) 128.525 306.925 (091°-240°) 126.1 338.25 (331°-090°) |
|-------------------------|---|

| |
|---|
| DULLES TOWER 120.1 317.8 (Rwy 1R/19L) 120.25 348.6 (Rwy 1C/19C) 134.425 348.6 (Rwys 1L/19R and 12/30) |
|---|

| |
|---|
| GND CON 121.9 317.8 (EAST) 121.625 348.6 (WEST) |
|---|



| | | |
|-----------------|----------|-----------------|
| ELEV 312 | D | TDZE 278 |
|-----------------|----------|-----------------|



| CATEGORY | A | B | C | D |
|-----------|---|-----------------------------|---|---|
| S-ILS 19R | | CAT II RA 102/12 100 DA 378 | | |
| S-ILS 19R | | CAT IIIa RVR 07 | | |
| S-ILS 19R | | CAT IIIb RVR 06 | | |
| S-ILS 19R | | CAT IIIc NA | | |

CATEGORY II & III ILS - SPECIAL AIRCREW & AIRCRAFT CERTIFICATION REQUIRED

NE-3, 11 JUL 2024 to 08 AUG 2024

NE-3, 11 JUL 2024 to 08 AUG 2024