

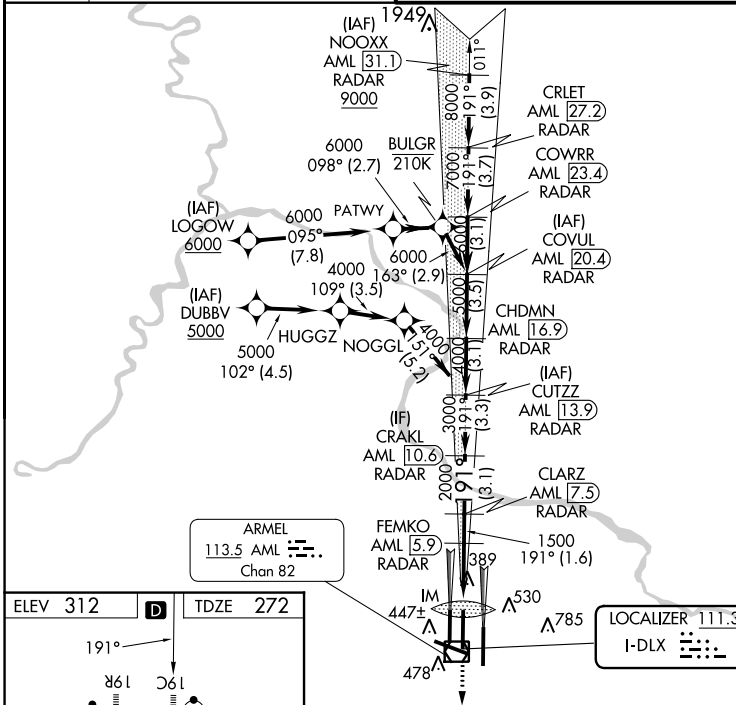
LOC I-DLX 111.3	APP CRS 191°	Rwy Idg 11089 TDZE 272 Apt Elev 312
---------------------------	------------------------	--

ILS or LOC RWY 19C

WASHINGTON DULLES INTL (IAD)

RNP APCH - GPS. RADAR required for procedure entry at NOOXX. DME or RADAR required.		ALSF-2 	MISSED APPROACH: Climb to 3000 direct MOOOV and hold.
 Simultaneous approach authorized. DME from AML VOR/DME. DME use requires simultaneous reception of I-DLX and AML DME. For inop ALS, increase S-LOC 19C Cat C and D visibility to RVR 5500.			
D-ATIS 134.85	POTOMAC APP CON 120.45 306.925 (241°-330°) 128.525 306.925 (091°-240°) 126.1 338.25 (331°-090°)	DULLES TOWER 120.1 317.8 (Rwy 1R/19L) 120.25 348.6 (Rwy 1C/19C) 134.425 348.6 (Rwys 1L/19R and 12/30)	GND CON 121.9 317.8 (EAST) 121.625 348.6 (WEST)

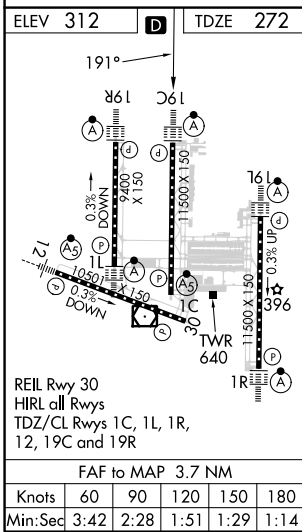
CLNC DEL 135.7 317.8	CPDLC
--------------------------------	-------



ARMEL
113.5 AML
Chan 82

LOCALIZER 111.3
I-DLX

MISSED APCH FIX
4 NM
187°
007°
MOOOV



3000 MOOOV	VGSi and ILS glidepath not coincident (VGSi Angle 3.00/TCH 72).			
CRLET AML 27.2 RADAR	NOOXX AML 31.1 RADAR	COVUL AML 23.4 RADAR	COWRR AML 20.4 RADAR	CHDMN AML 16.9 RADAR
CUTZZ AML 13.9 RADAR	CRACKL AML 10.6 RADAR	CLARZ AML 7.5 RADAR	FEMKO AML 5.9 RADAR	IM 447±
9000	8000	7000	6000	5000
4000	3000	2000	1500	1500
0.2 NM	0.7 NM	2.8 NM	1.6 NM	3.1 NM
3.3 NM	3.1 NM	3.5 NM	3.1 NM	3.7 NM
3.9 NM				
CATEGORY	A		B	
S-ILS 19C	472/18 200 (200-½)			
S-LOC 19C	640/24	368 (400-½)	640/35	368 (400-½)
CIRCLING	940-1	628 (700-1)	940-1¾	1180-2¾
			628 (700-1¾)	868 (900-2¾)

NE-3, 11 JUL 2024 to 08 AUG 2024

NE-3, 11 JUL 2024 to 08 AUG 2024