

LOC/DME I-SGC <b>110.1</b> Chan <b>38</b>	APP CRS <b>191°</b>	Rwy ldg <b>11500</b> TDZE <b>302</b> Apt Elev <b>312</b>
---	------------------------	--

# ILS or LOC RWY 19L

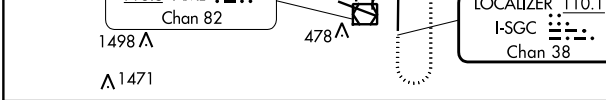
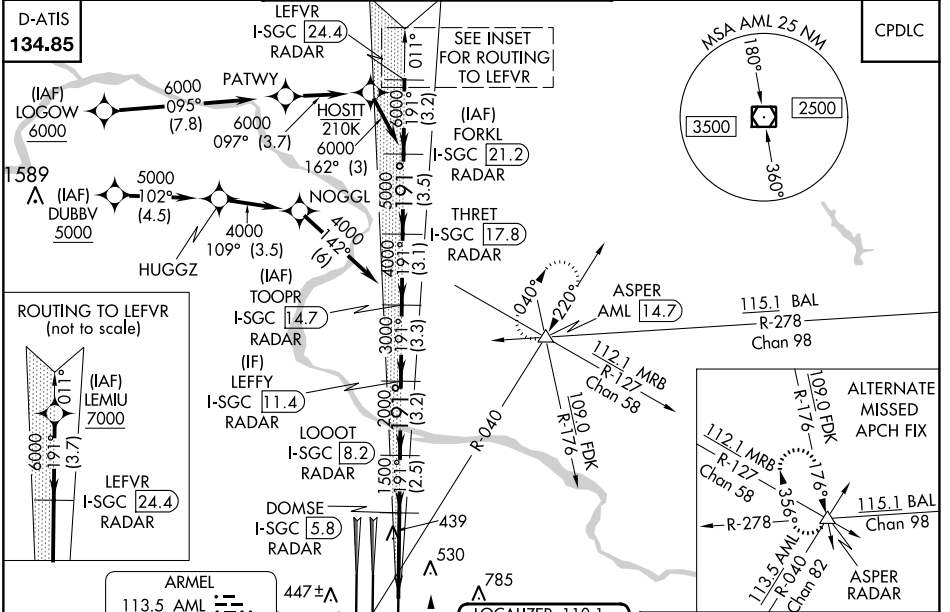
## WASHINGTON DULLES INTL (IAD)

RNP APCH - GPS. From LOGOV, or DUBBV, or LEMIU.  
 DME or RADAR required. RADAR required for procedure entry at LEMIU.  
 Simultaneous approach authorized.  
 \*RVF 1800 authorized with use of FD or AP or HUD to DA.

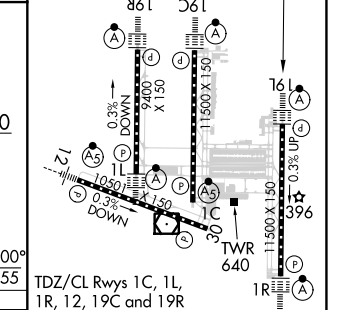
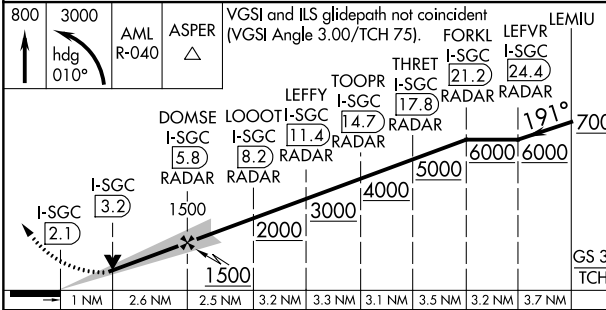


MISSED APPROACH: Climb to 800 then climbing left turn to 3000 on heading 010° and on AML VOR/DME R-040 to ASPER INT/AML 14.7 DME and hold.

POTOMAC APP CON <b>120.45 306.925</b> (241°-330°) <b>128.525 306.925</b> (091°-240°) <b>126.1 338.25</b> (331°-090°)	DULLES TOWER <b>120.1 317.8</b> (Rwy 1R/19L) <b>120.25 348.6</b> (Rwy 1C/19C) <b>134.425 348.6</b> (Rwys 1L/19R and 12/30)	GND CON <b>121.9 317.8</b> (EAST) <b>121.625 348.6</b> (WEST)	CLNC DEL <b>135.7 317.8</b>
---	---	---	--------------------------------



ELEV 312	TDZE 302
----------	----------



CATEGORY	A	B	C	D
S-ILS 19L *	502/24		200 (200-½)	
S-LOC 19L	700/24		398 (400-½)	
	700/35		398 (400-¾)	

TDZ/CL Rwys 1C, 1L, 1R, 12, 19C and 19R					
REIL Rwy 30					
HIRL all Rwys					
FAF to MAP 3.6 NM					
Knots	60	90	120	150	180
Min:Sec	3:36	2:24	1:48	1:26	1:12

NE-3, 11 JUL 2024 to 08 AUG 2024

NE-3, 11 JUL 2024 to 08 AUG 2024