

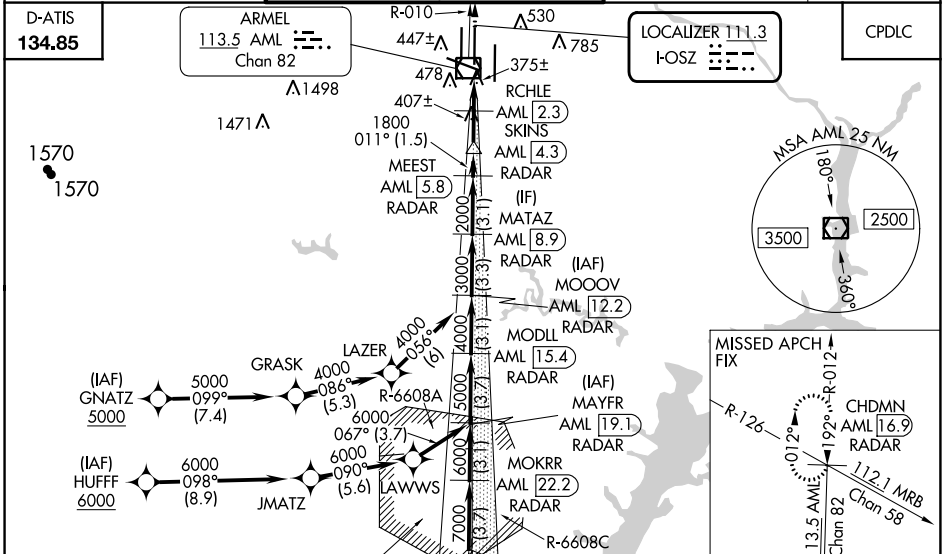
LOC I-OSZ 111.3	APP CRS 011°	Rwy ldg 11500
		TDZE 286
		Apt Elev 312

ILS or LOC RWY 1C

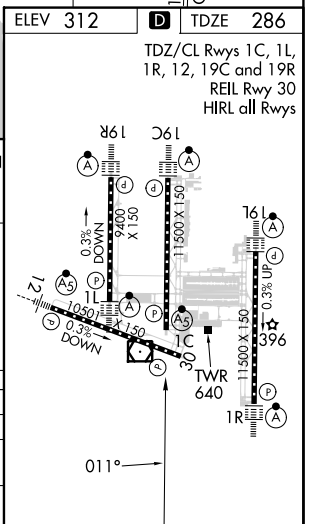
WASHINGTON DULLES INTL (IAD)

RNP APCH-GPS. From GNATZ or HUFFF.	
DME or RADAR required. DME required for LOC only. RADAR required for procedure entry at MUDDO.	
<p>Simultaneous approach authorized. For inop ALS, increase S-LOC Cats C/D visibility to RVR 5500. DME from AML VOR/DME. DME use requires simultaneous reception of I-OSZ and AML DME.</p>	
POTOMAC APP CON 120.45 306.925 (241°-330°) 128.525 306.925 (091°-240°) 126.1 338.25 (331°-090°)	DULLES TOWER 120.1 317.8 (Rwys 1R/19L) 120.25 348.6 (Rwys 1C/19C) 134.425 348.6 (Rwys 1L/19R and 12/30)

MALS R 	MISSED APPROACH: Climb to 4000 on AML VOR/DME R-010 to CHDMN/AML 16.9 DME/RADAR and hold, continue climb-in-hold to 4000.
GND CON 121.9 317.8 (EAST) 121.625 348.6 (WEST)	CLNC DEL 135.7 317.8



MUDDO AML [30.8] RADAR	MOKRR AML [22.2] RADAR	MODLL AML [15.4] RADAR	MATAZ AML [8.9] RADAR	4000 AML R-010	CHDMN AML [16.9] RADAR		
9000 RADAR	MAYFR AML [19.1] RADAR	MOOOV AML [12.2] RADAR	MEEST AML [5.8] RADAR	SKINS AML [4.3] RADAR	AML VOR/DME		
8000 RADAR	LAZER AML [5.3] RADAR	GRASK AML [5.3] RADAR	GNATZ AML [5.0] RADAR	RCHLE AML [2.3] RADAR	AML [0.4]		
7000 RADAR	JMATZ AML [5.6] RADAR	HUFFF AML [8.9] RADAR	MRTZY AML [25.9] RADAR	MOKRR AML [22.2] RADAR	1800 RADAR		
6000 RADAR	MUDDO AML [30.8] RADAR	MAYFR AML [19.1] RADAR	MOOOV AML [12.2] RADAR	MEEST AML [5.8] RADAR	760 RADAR		
5000 RADAR	LAZER AML [5.3] RADAR	GRASK AML [5.3] RADAR	GNATZ AML [5.0] RADAR	RCHLE AML [2.3] RADAR	1800 RADAR		
4000 RADAR	JMATZ AML [5.6] RADAR	HUFFF AML [8.9] RADAR	MRTZY AML [25.9] RADAR	MOKRR AML [22.2] RADAR	760 RADAR		
3000 RADAR	MUDDO AML [30.8] RADAR	MAYFR AML [19.1] RADAR	MOOOV AML [12.2] RADAR	MEEST AML [5.8] RADAR	1800 RADAR		
2000 RADAR	LAZER AML [5.3] RADAR	GRASK AML [5.3] RADAR	GNATZ AML [5.0] RADAR	RCHLE AML [2.3] RADAR	760 RADAR		
1800 RADAR	JMATZ AML [5.6] RADAR	HUFFF AML [8.9] RADAR	MRTZY AML [25.9] RADAR	MOKRR AML [22.2] RADAR	760 RADAR		
760 RADAR	MUDDO AML [30.8] RADAR	MAYFR AML [19.1] RADAR	MOOOV AML [12.2] RADAR	MEEST AML [5.8] RADAR	1800 RADAR		
4.9 NM	3.7 NM	3.1 NM	3.1 NM	3.1 NM	1.5 NM	2 NM	2.6 NM
S-ILS 1C		486/18		200 (200-½)			
S-LOC 1C		640/24		354 (400-½)		640/30 354 (400-¾)	
CIRCLING		940-1		628 (700-1)		940-1¾ 628 (700-1¾) 1180-2¾ 868 (900-2¾)	



NE-3, 11 JUL 2024 to 08 AUG 2024

NE-3, 11 JUL 2024 to 08 AUG 2024