

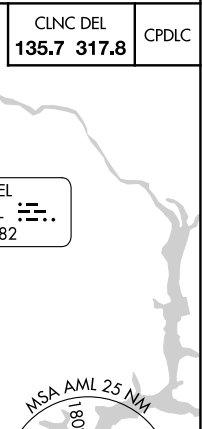
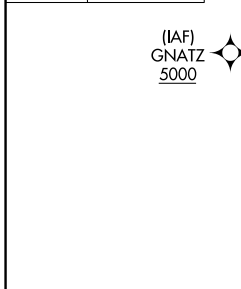
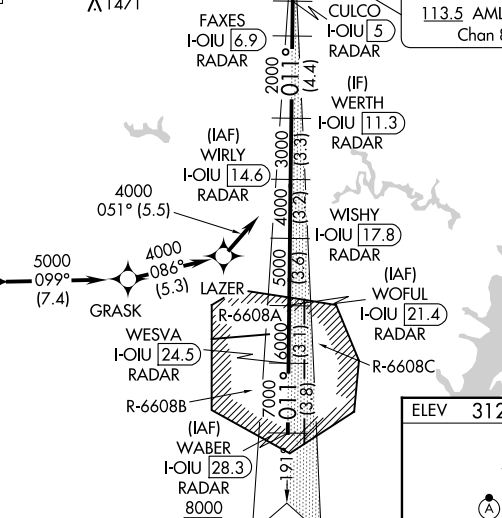
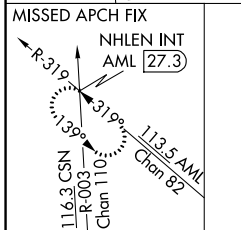
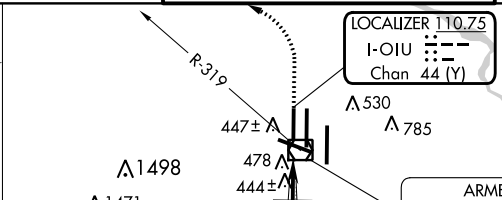
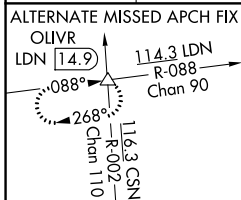
LOC/DME I-OIU <b>110.75</b>	APP CRS <b>011°</b>	Rwy ldg <b>9400</b>
Chan <b>44 (Y)</b>	TDZE <b>296</b>	Apt Elev <b>312</b>

# ILS or LOC RWY 1L

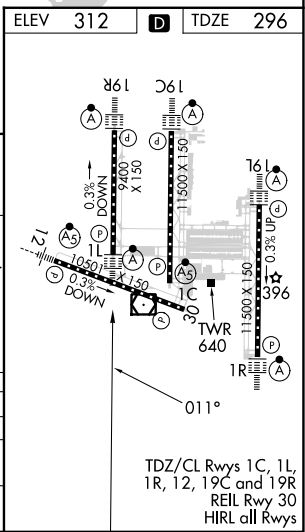
WASHINGTON DULLES INTL (IAD)

RNP APCH - GPS. From GNATZ.	ALSF-2	MISSED APPROACH: Climb to 800 then climbing left turn to 3000 on heading 276° and on AML VOR/DME R-319 to NHLEN INT/AML 27.3 DME and hold.
DME or RADAR required. DME required for LOC only. RADAR required for procedure entry at WABER.		
<b>∇</b> Simultaneous approach authorized.		
<b>⚠</b> For inop ALS, increase LOC Cats C/D visibility to RVR 5500.		

D-ATIS <b>134.85</b>	POTOMAC APP CON <b>120.45 306.925</b> (241°-330°) <b>128.525 306.925</b> (091°-240°) <b>126.1 338.25</b> (331°-090°)	DULLES TOWER <b>120.1 317.8</b> (Rwy 1R/19L) <b>120.25 348.6</b> (Rwy 1C/19C) <b>134.425 348.6</b> (Rwys 1L/19R and 12/30)	GND CON <b>121.9 317.8</b> (EAST) <b>121.625 348.6</b> (WEST)
-------------------------	---	---	---



WABER I-OIU <b>28.3</b> RADAR	WOFUL I-OIU <b>21.4</b> RADAR	WIRLY I-OIU <b>14.6</b> RADAR	WESVA I-OIU <b>24.5</b> RADAR	WISHY I-OIU <b>17.8</b> RADAR	WERTH I-OIU <b>11.3</b> RADAR	FAXES I-OIU <b>6.9</b> RADAR	CULCO I-OIU <b>5</b> RADAR	I-OIU <b>2.6</b>	I-OIU <b>1.7</b>	800	3000	AML R-319	NHLEN INT
VGSi and ILS glidepath not coincident (VGSi Angle 3.00°/TCH 70).													
GS 3.00° TCH 55													
8000													
7000													
6000													
5000													
4000													
3000													
2000													
1400													
3.8 NM	3.1 NM	3.6 NM	3.2 NM	3.3 NM	4.4 NM	1.9 NM	2.4	0.9					



CATEGORY	A	B	C	D
S-ILS 1L	496/18		200 (200-½)	
S-LOC 1L	660/24 364 (400-½)		660/35 364 (400-⅙)	
CIRCLING	940-1 628 (700-1)		940-1¾ 1180-2¾ 628 (700-1¾) 868 (900-2¾)	

NE-3, 11 JUL 2024 to 08 AUG 2024

NE-3, 11 JUL 2024 to 08 AUG 2024