

WAAS CH <b>86310</b> <b>W12A</b>	APP CRS <b>121°</b>	Rwy Idg <b>10501</b> TDZE <b>310</b> Apt Elev <b>312</b>
--	------------------------	--

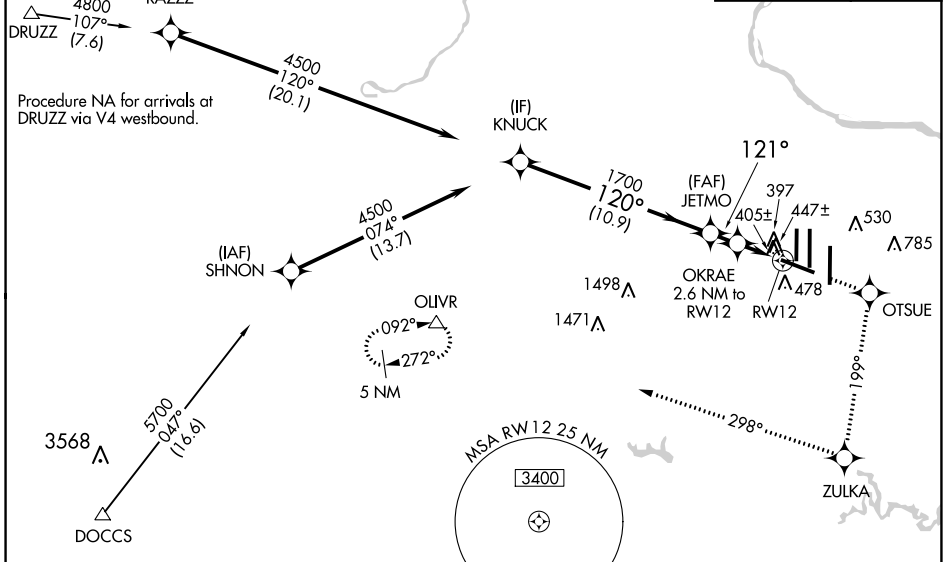
# RNAV (GPS) RWY 12

WASHINGTON DULLES INTL (IAD)

RNP APCH. ▼ For inop ALS, increase LNAV Cats C/D visibility to RVR 6000. ▲ For uncompensated Baro-VNAV systems, LNAV/VNAV NA below -15°C or above 48°C.	MALSR 	MISSED APPROACH: Climb to 4000 direct OTSUE and via 199° track to ZULKA and right turn via 298° track to OLIVR and hold.
---	-----------	--

D-ATIS <b>134.85</b>	POTOMAC APP CON <b>120.45 306.925</b> (241°-330°) <b>128.525 306.925</b> (091°-240°) <b>126.1 338.25</b> (331°-090°)	DULLES TOWER <b>120.1 317.8</b> (Rwy 1R/19L) <b>120.25 348.6</b> (Rwy 1C/19C) <b>134.425 348.6</b> (Rwys 1L/19R and 12/30)	GND CON <b>121.9 317.8</b> (EAST) <b>121.625 348.6</b> (WEST)
-------------------------	---	---	---

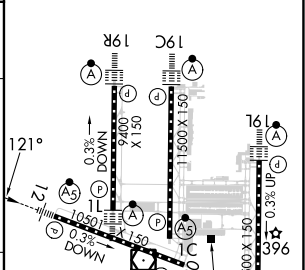
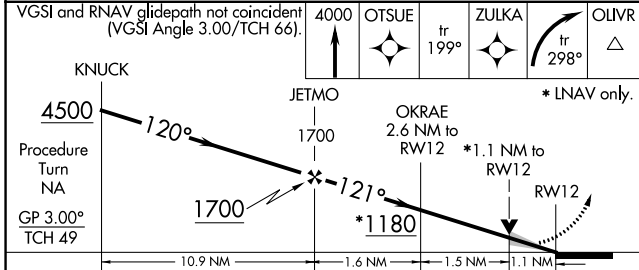
CLNC DEL <b>135.7 317.8</b>	CPDLC
--------------------------------	-------



NE-3, 11 JUL 2024 to 08 AUG 2024

NE-3, 11 JUL 2024 to 08 AUG 2024

ELEV 312	<b>D</b>	TDZE 310
----------	----------	----------



CATEGORY	A	B	C	D
LPV DA		510/18	200 (200-½)	
LNAV/VNAV DA		737/50	427 (500-1)	
LNAV MDA	720/24	410 (500-½)	720/40	410 (500-¾)
CIRCLING	940-1	628 (700-1)	940-1¾ 628 (700-1¾)	1180-2¾ 868 (900-2¾)

TDZ/CL Rwys 1C, 1L, 1R, 12, 19C and 19R  
REL Rwy 30  
HIRL all Rwys