

APP CRS	Rwy Idg	9400
011°	TDZE	296
	Apt Elev	312

RNAV (RNP) Z RWY 1L

WASHINGTON DULLES INTL (IAD)

RNP AR APCH - GPS.

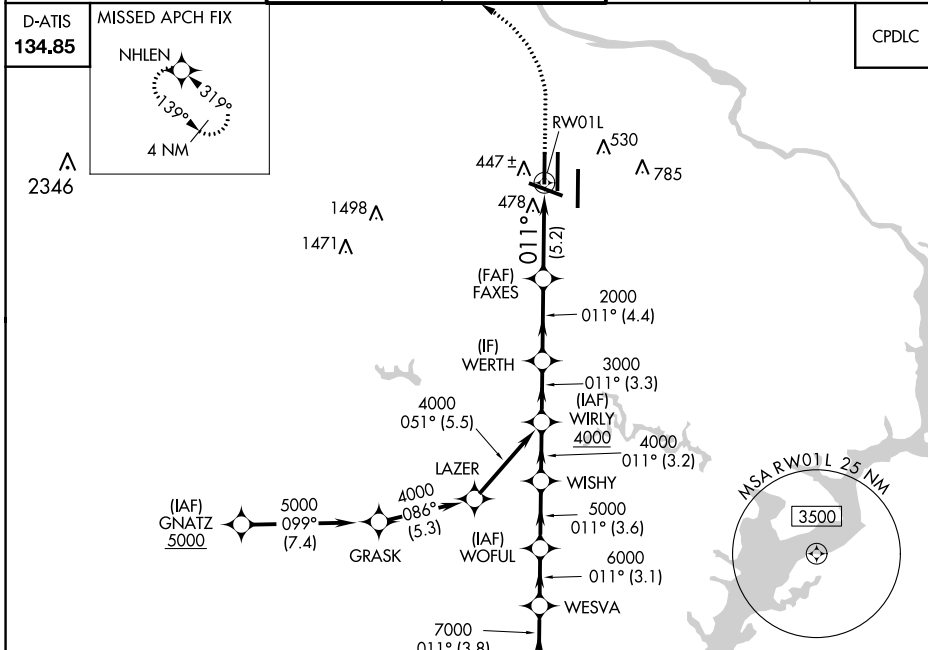
ALSF-2



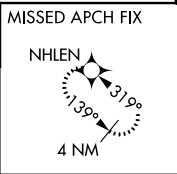
▼ For uncompensated Baro-VNAV systems, procedure NA below -13°C or above 54°C. Simultaneous approach authorized. For inop ALS, increase RNP 0.11 all Cats visibility to RVR 4500 and RNP 0.30 all Cats visibility to RVR 6000.

MISSED APPROACH: Climb to 800 then climbing left turn to 3000 direct NHLEN and hold.

POTOMAC APP CON	DULLES TOWER	GND CON	CLNC DEL
120.45 306.925 (241°-330°)	120.1 317.8 (Rwy 1R/19L)	121.9 317.8 (EAST)	135.7 317.8
128.525 306.925 (091°-240°)	120.25 348.6 (Rwy 1C/19C)	121.625 348.6 (WEST)	
126.1 338.25 (331°-090°)	134.425 348.6 (Rwys 1L/19R and 12/30)		



D-ATIS
134.85

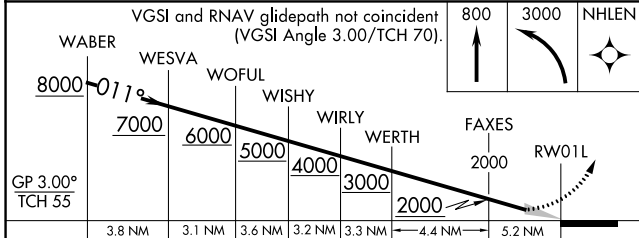


CPDLC

NE-3, 11 JUL 2024 to 08 AUG 2024

NE-3, 11 JUL 2024 to 08 AUG 2024

ELEV 312	TDZE 296
----------	----------



CATEGORY	A	B	C	D
RNP 0.11 DA		572/24	276 (300-½)	
RNP 0.30 DA		710/40	414 (400-¾)	

AUTHORIZATION REQUIRED

