

APP CRS	Rwy Idg	10501
301°	TDZE	288
	Apt Elev	312

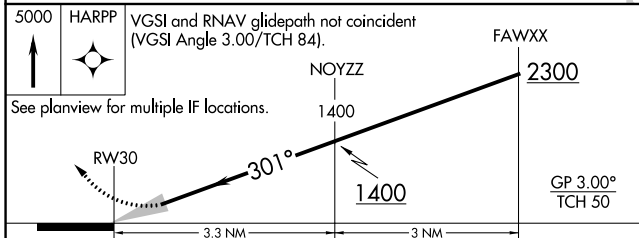
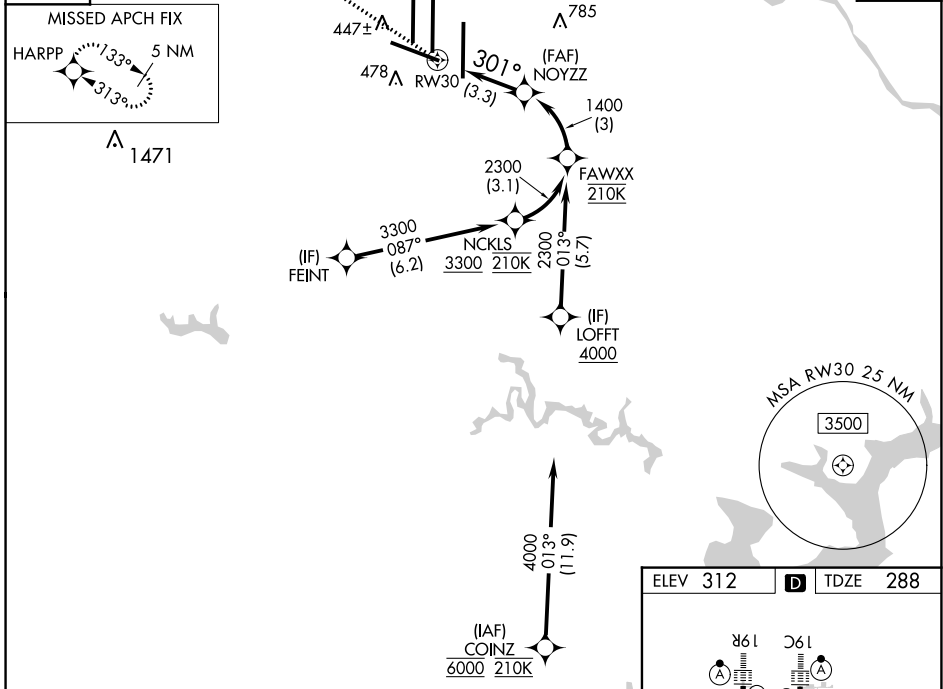
RNAV (RNP) Z RWY 30

WASHINGTON DULLES INTL (IAD)

RNP AR APCH - GPS.	For uncompensated Baro-VNAV systems, procedure NA below -13°C or above 54°C.	MISSED APPROACH: Climb to 5000 direct HARPP and hold.
--------------------	--	---

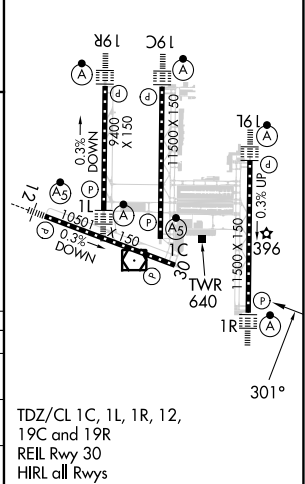
POTOMAC APP CON	DULLES TOWER	GND CON	CLNC DEL
120.45 306.925 (241°-330°)	120.1 317.8 (Rwy 1R/19L)	121.9 317.8 (EAST)	135.7 317.8
128.525 306.925 (091°-240°)	120.25 348.6 (Rwy 1C/19C)	121.625 348.6 (WEST)	
126.1 338.25 (331°-090°)	134.425 348.6 (Rwys 1L/19R and 12/30)		

D-ATIS	CPDLC
134.85	



5000 HARPP	VGSi and RNAV glidepath not coincident (VGSi Angle 3.00/TCH 84).			
See planview for multiple IF locations.	FAWXX 2300			
	A	B	C	D
RNP 0.11 DA	750-1 ³ / ₈		462 (500-1 ³ / ₈)	
RNP 0.30 DA	808-1 ³ / ₈		520 (500-1 ³ / ₈)	

ELEV 312	D	TDZE 288
----------	---	----------



AUTHORIZATION REQUIRED

NE-3, 11 JUL 2024 to 08 AUG 2024

NE-3, 11 JUL 2024 to 08 AUG 2024