

(BLOKR6.BLOKR) 20002

AL-5103 (FAA)

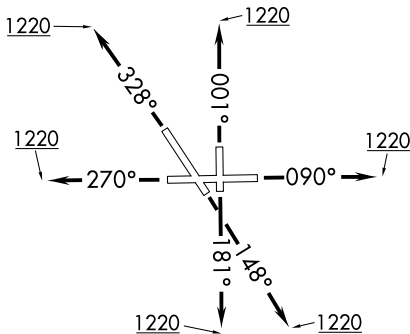
AURORA MUNI (A.R.R)  
CHICAGO/AURORA, ILLINOIS

# BLOKR SIX DEPARTURE (RNAV)

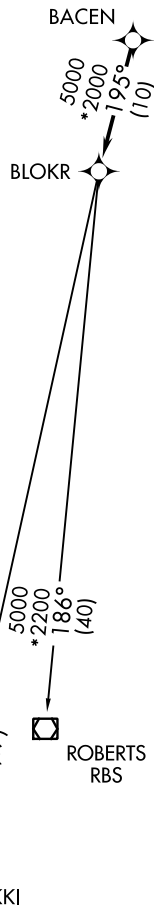
ATIS  
125.85  
GND CON  
121.7  
AURORA TOWER\*  
120.6  
CHICAGO DEP CON  
133.5 349.0

**TOP ALTITUDE:**  
**3000**

TAKEOFF MINIMUMS:  
Rwys 9, 15, 18, 27, 33,  
36: Standard.



- NOTE: RADAR required.
- NOTE: DME/DME/IRU or GPS required.
- NOTE: RNAV 1.
- NOTE: Turbojet departures maintain 250K until advised by ATC.
- NOTE: ROBERTS TRANSITION: For aircraft inbound to CMI or STL, or as assigned by ATC.



## DEPARTURE ROUTE DESCRIPTION

- TAKEOFF RUNWAY 9: Climb heading 090° to 1220, then as assigned by ATC, for vectors to BACEN. Thence. . .
- TAKEOFF RUNWAY 15: Climb heading 148° to 1220, then as assigned by ATC, for vectors to BACEN. Thence. . .
- TAKEOFF RUNWAY 18: Climb heading 181° to 1220, then as assigned by ATC, for vectors to BACEN. Thence. . .
- TAKEOFF RUNWAY 27: Climb heading 270° to 1220, then as assigned by ATC, for vectors to BACEN. Thence. . .
- TAKEOFF RUNWAY 33: Climb heading 328° to 1220, then as assigned by ATC, for vectors to BACEN. Thence. . .
- TAKEOFF RUNWAY 36: Climb heading 001° to 1220, then as assigned by ATC, for vectors to BACEN. Thence. . .

. . . on track 195° to BLOKR, then on (transition).  
Maintain 3000. Expect filed altitude 10 minutes after departure.

BEKKI TRANSITION (BLOKR6.BEKKI):  
ROBERTS TRANSITION (BLOKR6.RBS):

NOTE: Chart not to scale.

# BLOKR SIX DEPARTURE (RNAV)

(BLOKR6.BLOKR) 10OCT19

CHICAGO/AURORA, ILLINOIS  
AURORA MUNI (A.R.R)

EC-3, 11 JUL 2024 to 08 AUG 2024

EC-3, 11 JUL 2024 to 08 AUG 2024