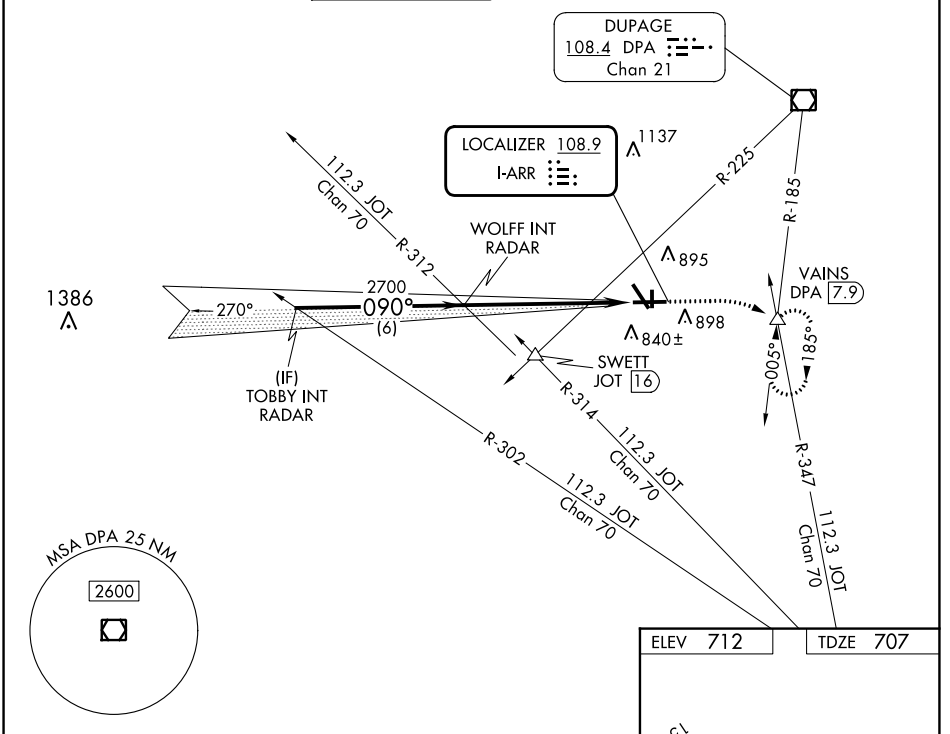


LOC I-ARR <b>108.9</b>	APP CRS <b>090°</b>	Rwy Idg TDZE Apt Elev	<b>6501</b> <b>707</b> <b>712</b>
---------------------------	------------------------	-----------------------------	---

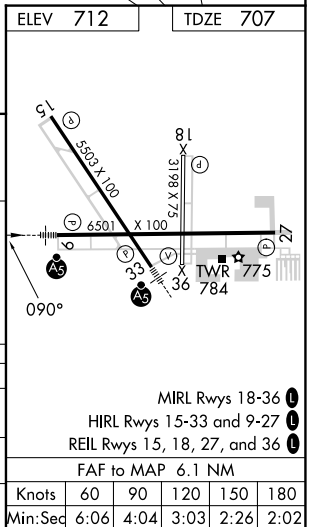
# ILS or LOC RWY 9

AURORA MUNI (A.R.R.)

RADAR required for procedure entry.		MALS R	MISSED APPROACH: Climb to 1200 then climbing right turn to 3000 on heading 090° and on DPA VOR/DME R-185 to VAINS INT/DPA 7.9 DME and hold, continue climb-in-hold to 3000.		
▼ For inop ALS, increase S-LOC 9 Cat C/D visibilities to 1½ SM.		AS			
ATIS <b>125.85</b>	CHICAGO APP CON <b>133.5 349.0</b>	AURORA TOWER ★ <b>120.6</b> (CTAF) <b>0</b>	GND CON <b>121.7</b>	CLNC DEL <b>121.7</b> (When tower closed)	UNICOM <b>122.95 123.5</b>



TOBBY INT RADAR	WOLFF INT RADAR	1200	3000	DPA R-185	VAINS
		↑	hdg 090°		
2700		2700			
GS 3.00° TCH 45					
6 NM		6.1 NM			
CATEGORY	A	B	C	D	
S-ILS 9	907-½ 200 (200-½)				
S-LOC 9	1220-½ 513 (600-½)		1220-1 513 (600-1)		
CIRCLING	1220-1 508 (600-1)		1300-1½ 588 (600-1½)		1320-2 608 (700-2)



EC-3, 11 JUL 2024 to 08 AUG 2024

EC-3, 11 JUL 2024 to 08 AUG 2024