

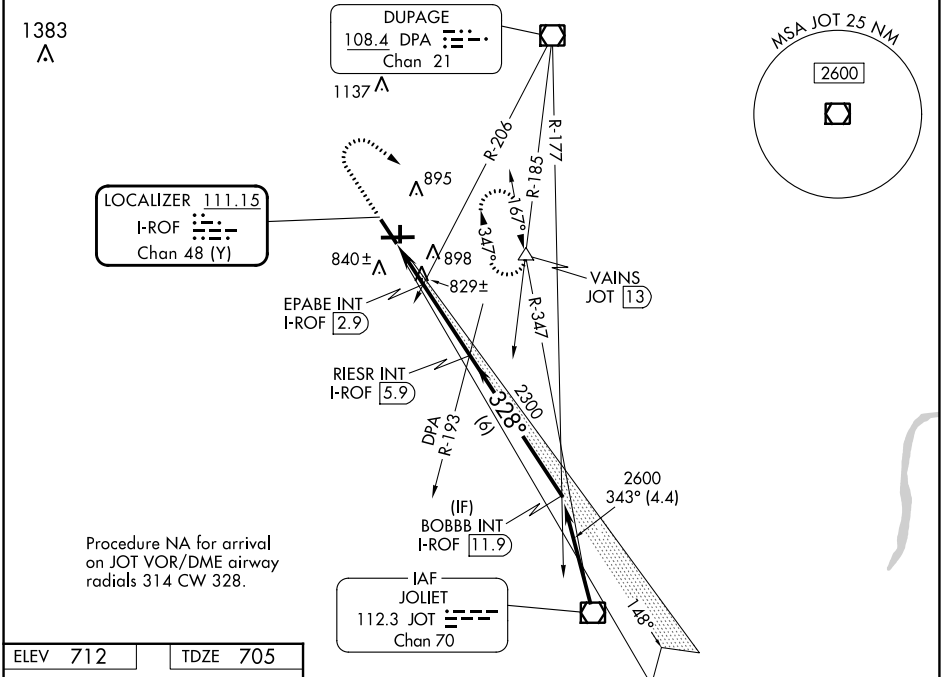
LOC/DME I-ROF 111.15 Chan 48 (Y)	APP CRS 328°	Rwy Ldg TDZE Apt Elev	5503 705 712
---	------------------------	-----------------------------	---

LOC RWY 33

AURORA MUNI (A.R.R.)

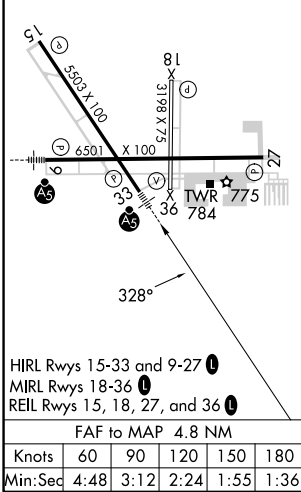
<p>▽ For inop ALS, increase S-LOC 33 Cats C and D visibility to 1 3/4 SM and EPABE FIX minimums S-LOC 33 Cats C and D visibility to 1 SM.</p>	<p>MALSR MISSED APPROACH: Climb to 1400 then climbing right turn to 3000 on heading 146° and JOT VOR/DME R-347 to VAINS INT/JOT 13 DME and hold, continue climb-in-hold to 3000.</p>
--	---

ATIS 125.85	CHICAGO APP CON 133.5 349.0	AURORA TOWER* 120.6 (CTAF) 0	GND CON 121.7	CLNC DEL 121.7 (When tower closed)	UNICOM 122.95 123.5
------------------------------	--	---	--------------------------------	--	--------------------------------------



Procedure NA for arrival on JOT VOR/DME airway radials 314 CW 328.

ELEV 712	TDZE 705
----------	----------



HIRL Rws 15-33 and 9-27
MIRL Rws 18-36
REIL Rws 15, 18, 27, and 36

FAF to MAP 4.8 NM

Knots	60	90	120	150	180
Min:Sec	4:48	3:12	2:24	1:55	1:36

1400	3000	JOT R-347	VAINS	RIESR INT I-ROF 5.9	BOBBB INT I-ROF 11.9
↑	hdg 146°				
				2300	2600
				328°	
				3.04°	
				1320	
				TCH 48	
				1 NM	0.8 NM
				3 NM	6 NM

CATEGORY	A	B	C	D
S-LOC 33	1320-1/2	615 (700-1/2)	1320-1 3/8	615 (700-1 3/8)
C CIRCLING	1320-1	608 (700-1)	1320-1 3/4 608 (700-1 1/4)	1320-2 608 (700-2)
EPABE FIX MINIMUMS (DUAL VOR RECEIVERS or DME REQUIRED)				
S-LOC 33	1080-1/2	375 (400-1/2)	1080-5/8	375 (400-5/8)
C CIRCLING	1200-1	488 (500-1)	1300-1 1/2 588 (600-1 1/2)	1320-2 608 (700-2)

EC-3, 11 JUL 2024 to 08 AUG 2024

EC-3, 11 JUL 2024 to 08 AUG 2024