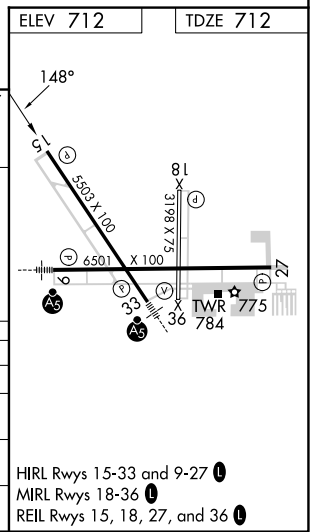
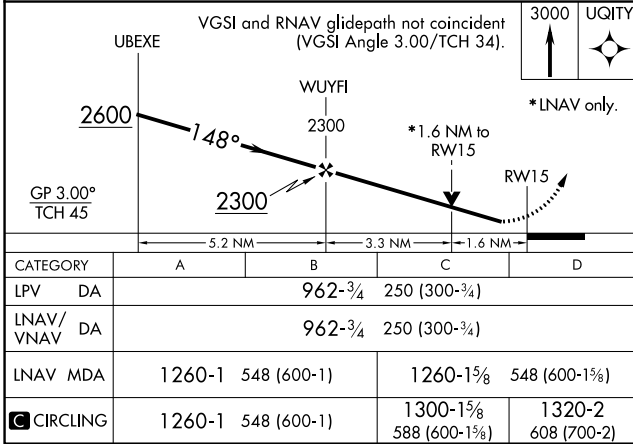
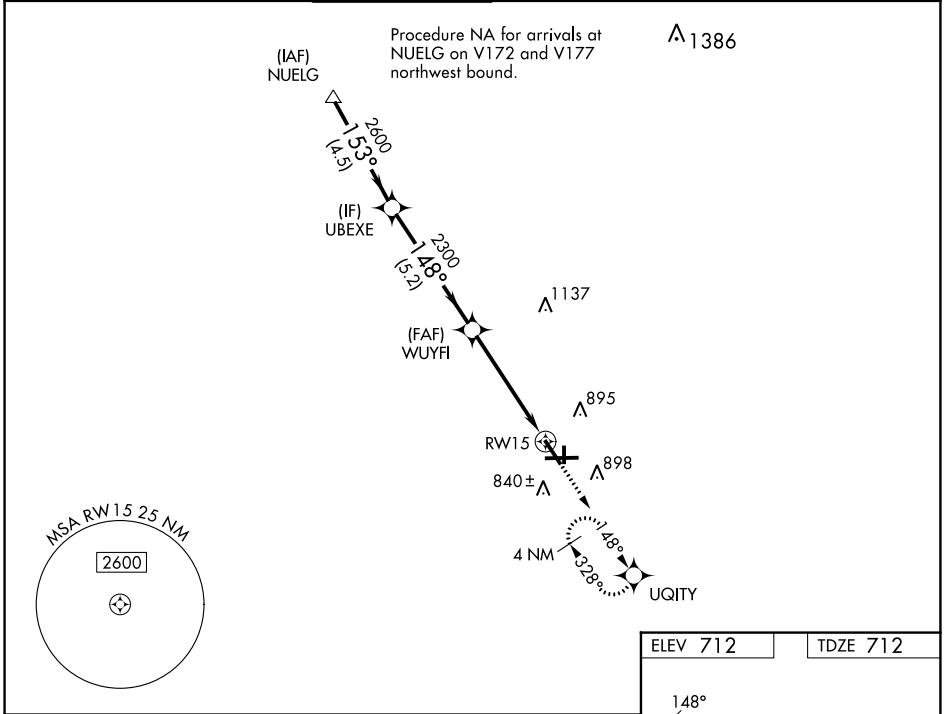


| | | | |
|--|------------------------|-----------------------------|---|
| WAAS CH 72941 W15A | APP CRS 148° | Rwy ldg TDZE Apt Elev | 5503 712 712 |
|--|------------------------|-----------------------------|---|

RNAV (GPS) RWY 15

AURORA MUNI (A.R.R.)

| | | | | | |
|--|---------------------------------------|---|-------------------------|---|-------------------------------|
| RNP APCH - GPS. | | MISSED APPROACH: Climb to 3000 direct UQITY and hold, continue climb-in-hold to 3000. | | | |
| ▼ For uncompensated Baro-VNAV systems, LNAV/VNAV NA below -20°C or above 54°C. Rwy 15 helicopter visibility reduction below ¼ SM NA. | | | | | |
| ATIS 125.85 | CHICAGO APP CON 133.5 349.0 | AURORA TOWER* 120.6 (CTAF) 0 | GND CON 121.7 | CLNC DEL 121.7 (When tower closed) | UNICOM 122.95 123.5 |



EC-3, 11 JUL 2024 to 08 AUG 2024

EC-3, 11 JUL 2024 to 08 AUG 2024