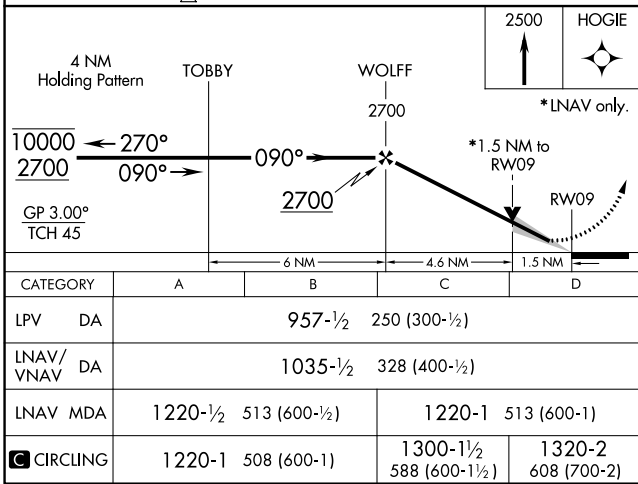
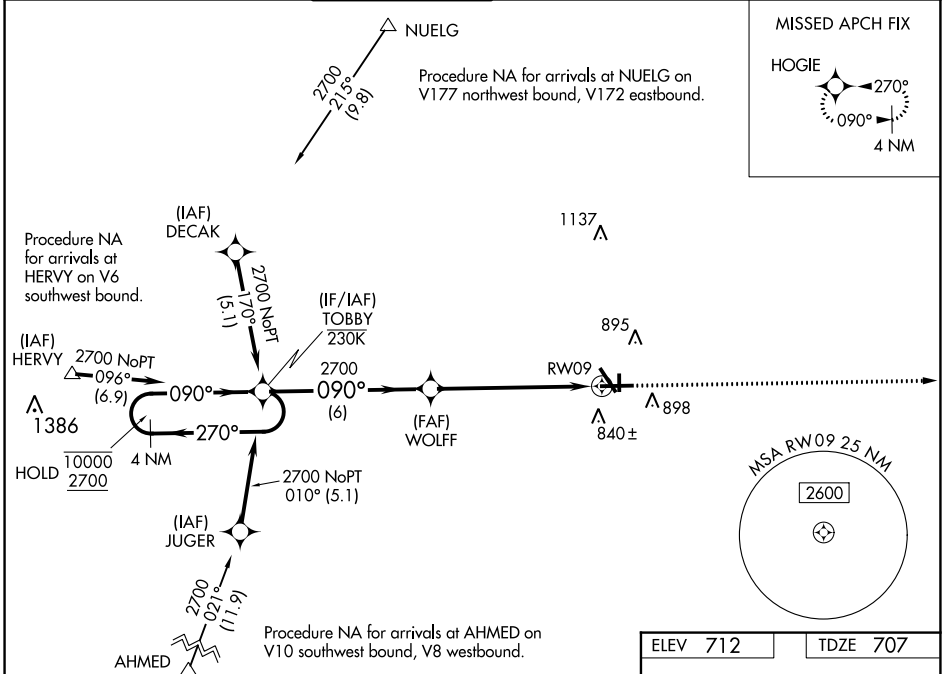


WAAS CH <b>45522</b> <b>W09A</b>	APP CRS <b>090°</b>	Rwy Idg <b>6501</b> TDZE <b>707</b> Apt Elev <b>712</b>
--	------------------------	---

# RNAV (GPS) RWY 9

AURORA MUNI (A.R.R.)

RNP APCH - GPS.				MALSRL	MISSED APPROACH: Climb to 2500 direct HOGIE and hold.
ATIS <b>125.85</b>	CHICAGO APP CON <b>133.5 349.0</b>	AURORA TOWER* <b>120.6</b> (CTAF) <b>0</b>	GND CON <b>121.7</b>	CLNC DEL <b>121.7</b> (When tower closed)	UNICOM <b>122.95 123.5</b>



ELEV 712	TDZE 707
----------	----------

MIRL Rwy 18-36 **0**  
HIRL Rwy 15-33 and 9-27 **0**  
REIL Rwy 15, 18, 27, and 36 **0**

EC-3, 11 JUL 2024 to 08 AUG 2024

EC-3, 11 JUL 2024 to 08 AUG 2024