

VORTAC SBV <b>110.4</b> Chan 41	APP CRS <b>081°</b>	Rwy Idg TDZE Apt Elev	<b>N/A</b> <b>N/A</b> <b>420</b>
---------------------------------------	------------------------	-----------------------------	----------------------------------------

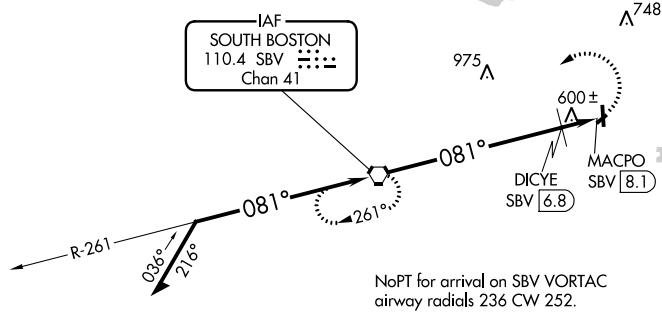
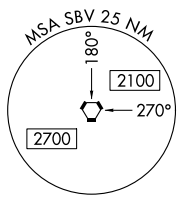
**VOR-A**

WILLIAM M TUCK (W78)

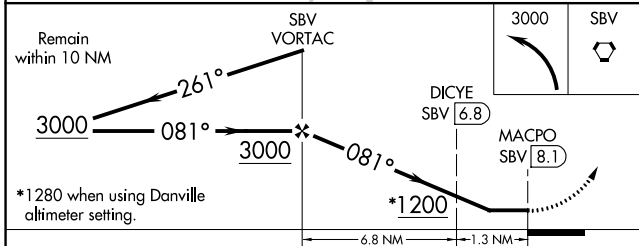
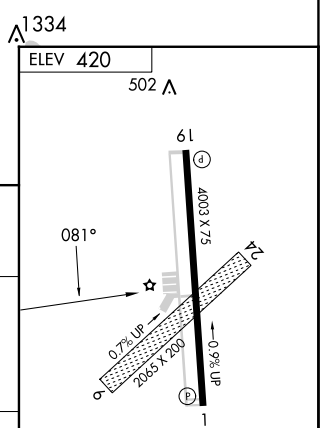
**⚠** Night landing: Rwy 19 NA. Helicopter visibility reduction below 1 SM NA. When local altimeter setting not received, use Danville altimeter setting and increase all MDA 80 feet; increase all Cats visibility and DICYE fix minimums Cat C visibility ¼ mile. Circling NA to Rwy 6-24.

**MISSED APPROACH:** Climbing left turn to 3000 direct SBV VORTAC and hold.

AWOS-3 <b>119.425</b>	WASHINGTON CENTER <b>124.05 352.0</b>	UNICOM <b>122.8 (CTAF) 0</b>
--------------------------	------------------------------------------	---------------------------------



NoPT for arrival on SBV VORTAC  
airway radials 236 CW 252.



CATEGORY	A	B	C	D	
<b>C</b> CIRCLING	1200-1	780 (800-1)	1200-2¼ 780 (800-2¼)	NA	
DICYE FIX MINIMUMS					
<b>C</b> CIRCLING	960-1	540 (600-1)	1060-1¾ 640 (700-1¾)	NA	
FAF to MAP 8.1 NM					
Knots	60	90	120	150	180
Min:Sec	8:06	5:24	4:03	3:14	2:42

**VOR-A**

NE-3, 11 JUL 2024 to 08 AUG 2024

NE-3, 11 JUL 2024 to 08 AUG 2024