

# RNAV (GPS) RWY 3

VERMILION RGNL (DNTV)

|                        |                        |
|------------------------|------------------------|
| APP CRS<br><b>030°</b> | Rwy Idg<br><b>6006</b> |
|                        | TDZE<br><b>674</b>     |
|                        | Apt Elev<br><b>697</b> |

RNP APCH - GPS.

▼ Circling NA to Rwys 12 and 30.  
▲ Rwy 3 helicopter visibility reduction below ¾ SM NA.

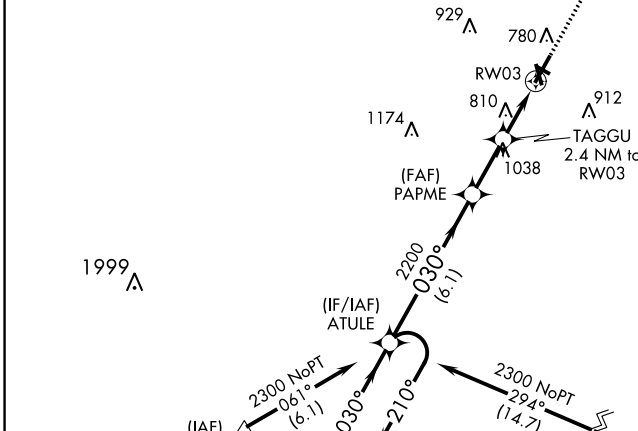
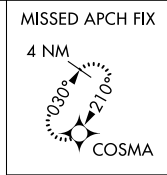
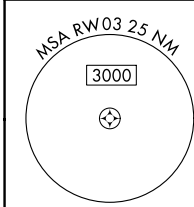
MISSED APPROACH: Climb to 2600 direct COSMA and hold.

AWOS-3  
**119.275**

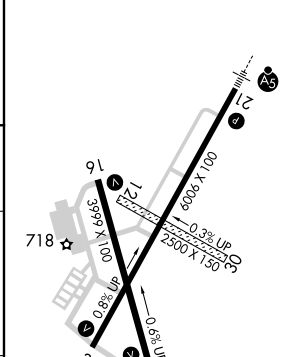
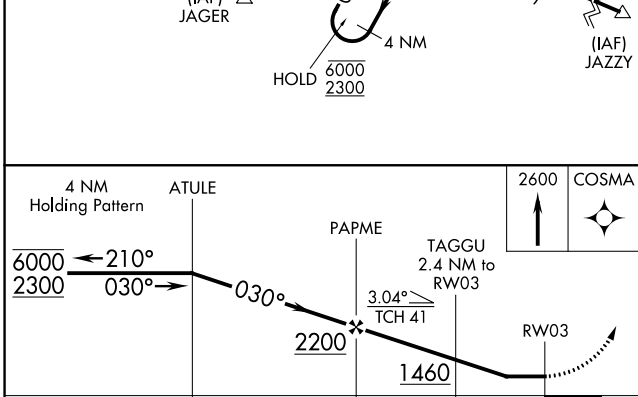
CHAMPAIGN APP CON ★  
**121.35 285.65**

CLNC DEL  
**121.7**

UNICOM  
**122.7 (CTAF) 0**



|          |          |
|----------|----------|
| ELEV 697 | TDZE 674 |
|----------|----------|



| CATEGORY | A      | B           | C                       | D                       |
|----------|--------|-------------|-------------------------|-------------------------|
| LNAV MDA | 1120-1 | 446 (500-1) | 1120-1¼<br>446 (500-1¼) | 1120-1½<br>446 (500-1½) |
| CIRCLING | 1160-1 | 463 (500-1) | 1240-1½<br>543 (600-1½) | 1340-2<br>643 (700-2)   |

HIRL Rwy 3-21 1  
MIRL Rwy 16-34 1  
REIL Rwys 16 and 34 1

EC-3, 11 JUL 2024 to 08 AUG 2024

EC-3, 11 JUL 2024 to 08 AUG 2024