

SAN CLEMENTE ISLAND, CALIFORNIA

# RNAV (GPS) RWY 24

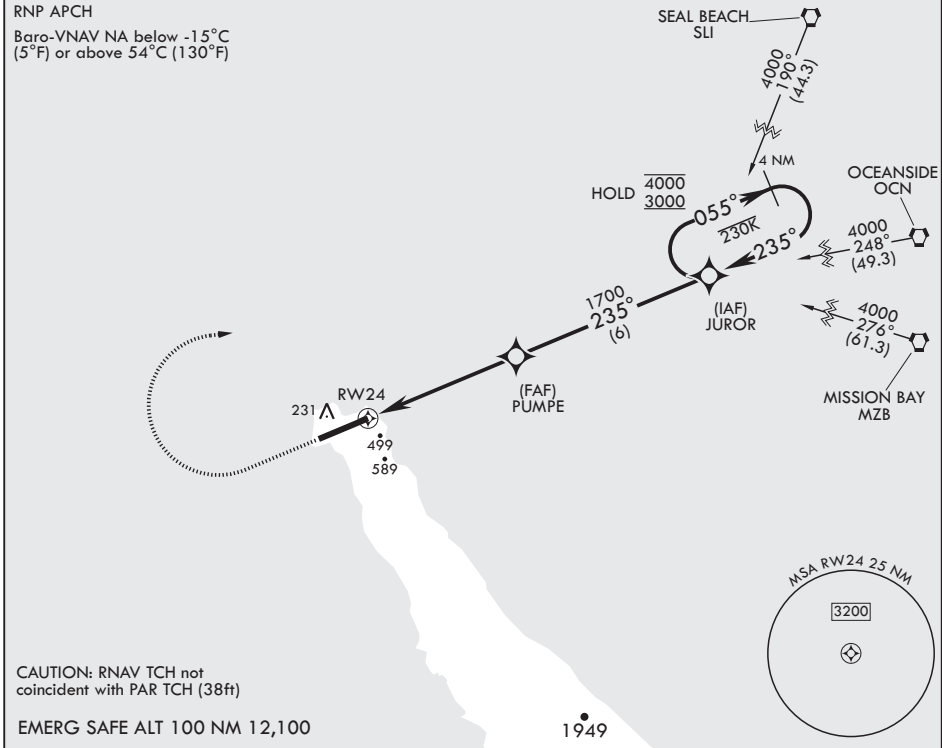
WAAS CH <b>87812</b> W24A	APCH CRS <b>235°</b>	Rwy ldg TDZE <b>184</b> Arpt Elev <b>184</b>
---------------------------------	-------------------------	--

AL-5126 (USN)

SAN CLEMENTE ISLAND NALF (FREDERICK SHERMAN FLD) (KNUC)

**⚠** \* Circling not authorized S of Rwy 6-24. MISSED APPROACH: Climb to 1500, then climbing right turn to 3000 direct JUROR and hold.

ATIS* <b>268.6</b>	SAN CLEMENTE APP CON <b>127.05 292.15</b>	TOWER* <b>126.75 278.8</b>	GND CON <b>119.55 251.05</b>	ASR/PAR
-----------------------	--	-------------------------------	---------------------------------	---------



CAUTION: RNAV TCH not coincident with PAR TCH (38ft)

EMERG SAFE ALT 100 NM 12,100

1500 crs 235°	3000	JUROR	ELEV 184	TDZE 184
CATEGORY	A	B	C	D
LPV DA	384-3/4		200 (200-3/4)	
LNAV/VNAV DA	632-1 3/8 448 (500-1 3/8)	641-1 3/8 457 (500-1 3/8)	649-1 3/8 465 (500-1 3/8)	661-1 3/8 477 (500-1 3/8)
LNAV MDA	760-1	576 (600-1)	760-1 3/8 576 (600-1 3/8)	760-2 596 (600-2)
<b>C</b> CIRCLING*	780-1	596 (600-1)	780-1 3/8 596 (600-1 3/8)	780-2 596 (600-2)
REIL Rwy 6 REIL Rwy 24 HIRL all Rwy's				

SAN CLEMENTE ISLAND, CALIFORNIA

Amdt 5 24FEB22

SAN CLEMENTE ISLAND NALF (FREDERICK SHERMAN FLD) (KNUC)

33°01'N - 118°35'W

# RNAV (GPS) RWY 24

SW-3, 11 JUL 2024 to 08 AUG 2024

SW-3, 11 JUL 2024 to 08 AUG 2024