

WAAS CH 63139 W11A	APP CRS 111°	Rwy Idg TDZE Apt Elev	4000 775 777
--	------------------------	-----------------------------	---

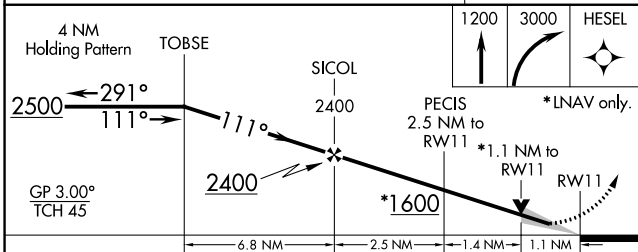
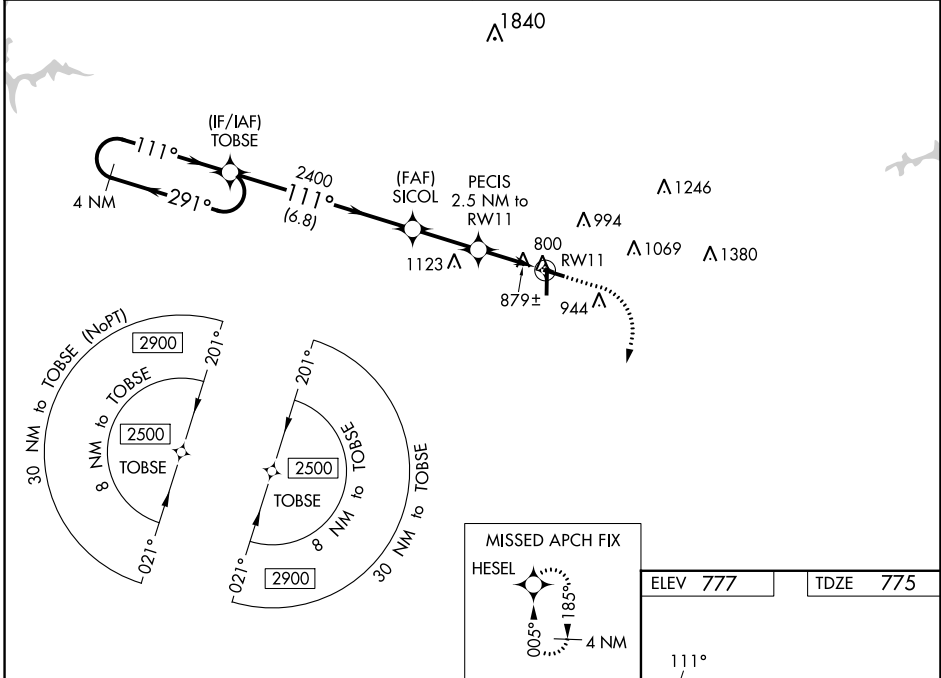
RNAV (GPS) RWY 11

AUBURN UNIVERSITY RGNL (AUO)

⚠ For uncompensated Baro-VNAV systems, LNAV/VNAV NA below -16°C (4°F) or above 54°C (130°F). Baro-VNAV and VDP NA when using Columbus altimeter setting.
⚠ DME/DME RNP-0.3 NA. When local altimeter setting not received, use Columbus altimeter setting: increase LPV DA to 1138 feet and visibility all Cats ¼ SM; increase LNAV/VNAV DA to 1173 feet and visibility all Cats ⅓ SM; increase all MDA 120 feet and LNAV Cats C/D and Circling Cat C visibility ½ SM and Circling Cat D visibility ⅓ SM.

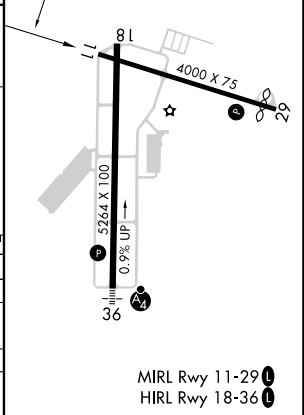
MISSED APPROACH:
Climb to 1200 then climbing right turn to 3000 direct HESEL and hold.

AWOS-3PT 132.575	ATLANTA APP CON * 125.5 323.1	CLNC DEL 118.7	UNICOM 123.0 (CTAF) 0
----------------------------	---	--------------------------	---------------------------------



ELEV 777	TDZE 775
----------	----------

CATEGORY	A	B	C	D
LPV DA	1025-1 250 (300-1)			
LNAV/VNAV DA	1060-1 285 (300-1)			
LNAV MDA	1160-1	385 (400-1)	1160-1½	385 (400-1½)
C CIRCLING	1280-1 503 (600-1)	1360-1 583 (600-1)	1380-1¾ 603 (700-1¾)	1480-2¼ 703 (800-2¼)



SE-4, 11 JUL 2024 to 08 AUG 2024

SE-4, 11 JUL 2024 to 08 AUG 2024