

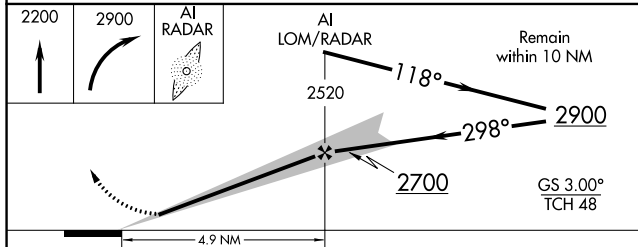
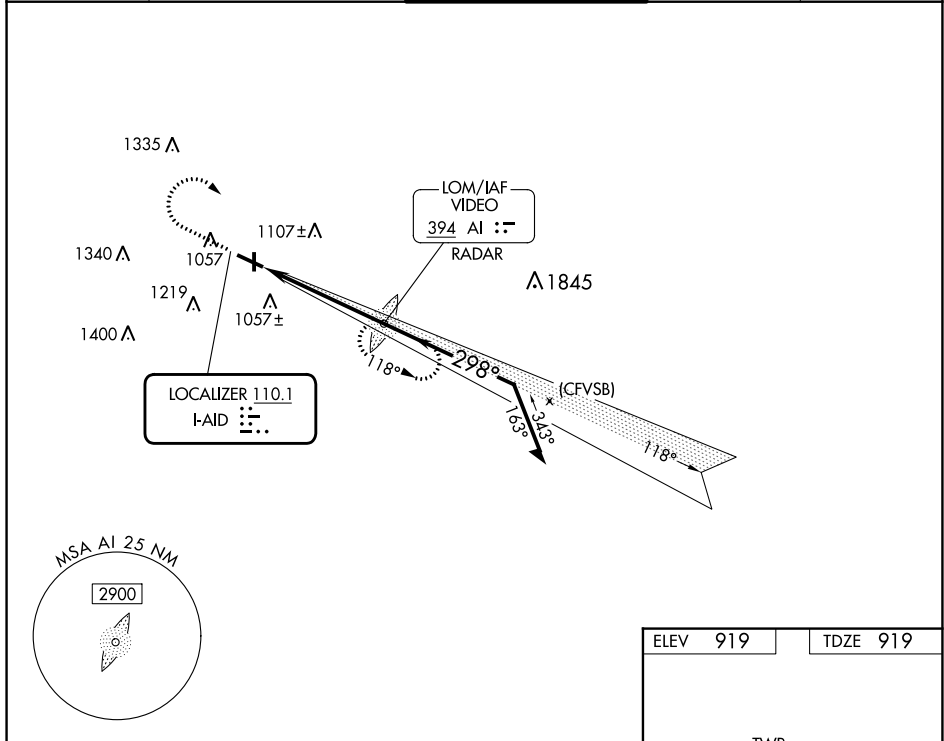
LOC I-AID <b>110.1</b>	APP CRS <b>298°</b>	Rwy ldg TDZE Apt Elev	<b>5320</b> <b>919</b> <b>919</b>
---------------------------	------------------------	-----------------------------	---

# ILS or LOC RWY 30

ANDERSON MUNI-DARLINGTON FLD (AID)

ADF required. RADAR required for procedure entry.		MALSF	MISSED APPROACH: Climb to 2200 then climbing right turn to 2900 direct VIDEO LOM/RADAR and hold.
▼ Rwy 30 helicopter visibility reduction below 3/4 SM NA. ▲ For inop ALS, increase S-ILS 30 all Cats visibility to 3/8 SM.			

AWOS-3 <b>128.55</b>	INDIANAPOLIS APP CON <b>120.65 317.8</b>	ANDERSON TOWER * <b>126.0 (CTAF) 0</b>	GND CON <b>121.6</b>	UNICOM <b>122.95</b>
-------------------------	---	---	-------------------------	-------------------------



ELEV	919	TDZE	919
REIL Rwy 12			
MIRL Rwys 12-30 and 18-36			
FAF to MAP 4.9 NM			
Knots	60	90	120 150 180
Min:Sec	4:54	3:16	2:27 1:58 1:38

EC-2, 11 JUL 2024 to 08 AUG 2024

EC-2, 11 JUL 2024 to 08 AUG 2024