

WAAS CH 56415 W30A	APP CRS 298°	Rwy Idg TDZE Apt Elev	5320 919 919
----------------------------------------	------------------------	-----------------------------	-----------------------------------------

RNAV (GPS) RWY 30
ANDERSON MUNI-DARLINGTON FLD (AID)

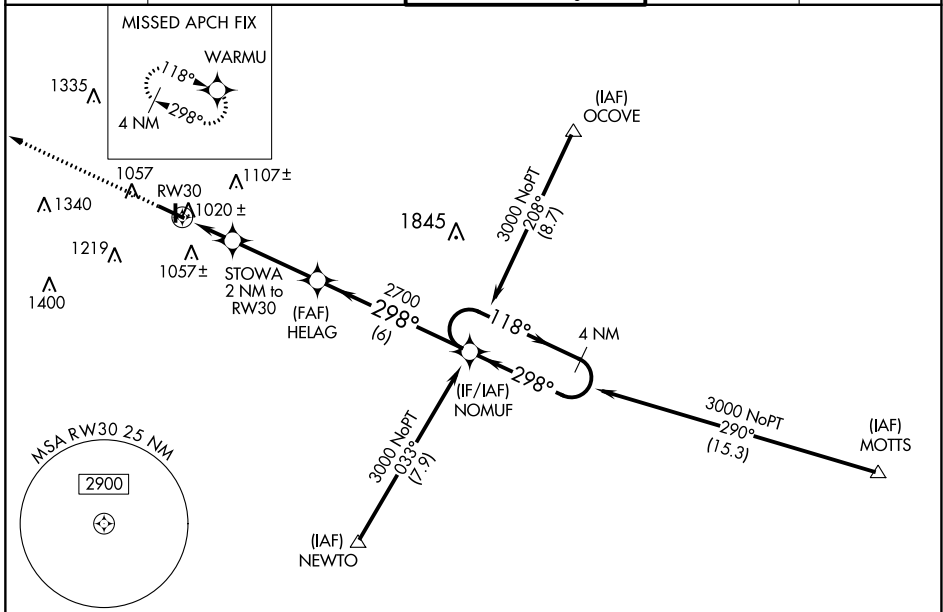
RNP APCH

For uncompensated Baro-VNAV systems, LNAV/VNAV NA below -16°C (4°F) or above 47°C (116°F). When local altimeter setting not received, use Muncie altimeter setting and increase all DA 32 feet and all MDA 40 feet, and increase LPV and LNAV/VNAV all Cats and LNAV Cat C visibility ¼ mile. Inoperative table does not apply.
Rwy 30 helicopter visibility reduction below ¾ SM NA.



MISSED APPROACH:
Climb to 3000 direct
WARMU and hold.

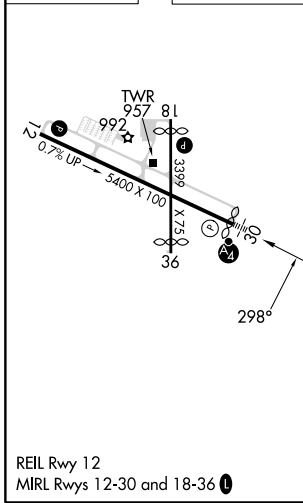
AWOS-3 128.55	INDIANAPOLIS APP CON 120.65 317.8	ANDERSON TOWER * 126.0 (CTAF) 0	GND CON 121.6	UNICOM 122.95
-------------------------	---------------------------------------------	--------------------------------------------------	-------------------------	-------------------------



EC-2, 11 JUL 2024 to 08 AUG 2024

EC-2, 11 JUL 2024 to 08 AUG 2024

ELEV	919	TDZE	919
------	------------	------	------------



3000	WARMU	4 NM Holding Pattern			
*LNAV only	STOWA 2 NM to RW30	HELAG	NOMUF	118° → 3000	
	1 NM to RW30			← 298°	GP 3.00° TCH 48
	RW30	1600*	2700	298°	
	1 NM	1 NM	3.4 NM	6 NM	
CATEGORY	A	B	C	D	
LPV DA	1234-1		315 (400-1)		
LNAV/VNAV DA	1367-1½		448 (500-1½)		
LNAV MDA	1300-1		381 (400-1)		1300-1¼ 381 (400-1¼)
C CIRCLING	1360-1 441 (500-1)	1400-1 481 (500-1)	1520-1¾ 601 (700-1¾)	1520-2 601 (700-2)	