

(CENTR1.ARD) 24025

CENTRAL ONE DEPARTURE

AL-5155 (FAA)

CENTRAL JERSEY RGNL (47N)
MANVILLE, NEW JERSEY

TTN ASOS
126.775
NEW YORK DEP CON
132.8 379.9
UNICOM
122.7

△ ELIOT

BROADWAY
114.2 BWZ
Chan 89

**TOP ALTITUDE:
2000**

DANDY ✧



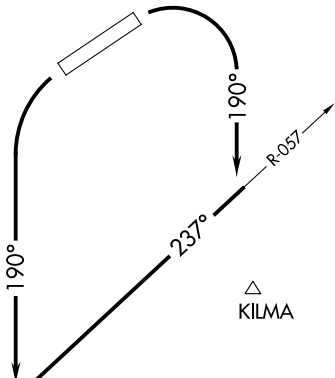
SOLBERG
112.9 SBJ
Chan 76

CHESA △

TAKEOFF MINIMUMS

Rwy 7: Standard.

Rwy 25: 300-1 or standard with minimum
climb of 280' per NM to 300.



△ BIGGY

△ KILMA

YARDLEY
108.2 ARD
Chan 19

V433

METRO



R-057

DYLIN

ROBBINSVILLE
113.8 RBV
Chan 85



NOTE: Chart not to scale.



DEPARTURE ROUTE DESCRIPTION

TAKEOFF RUNWAY 7: Climbing right turn to heading 190° to intercept ARD VOR/DME R-057 to METRO INT, thence

TAKEOFF RUNWAY 25: Climbing left turn to heading 190° to intercept ARD VOR/DME R-057 to METRO INT, thence

. . . . on ARD VOR/DME R-057 to ARD VOR/DME. Maintain 2000.

Expect clearance to filed altitude/flight level ten minutes after departure.

CENTRAL ONE DEPARTURE

(CENTR1.ARD) 28FEB19

MANVILLE, NEW JERSEY
CENTRAL JERSEY RGNL (47N)

NE-2, 11 JUL 2024 to 08 AUG 2024

NE-2, 11 JUL 2024 to 08 AUG 2024