

WAAS CH 78104 W27A	APP CRS 264°	Rwy Idg TDZE 843 Apt Elev 845	4206 843 845
--	------------------------	---	---

RNAV (GPS) RWY 27R

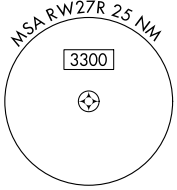
GRAND FORKS INTL (GFK)

RNP APCH.

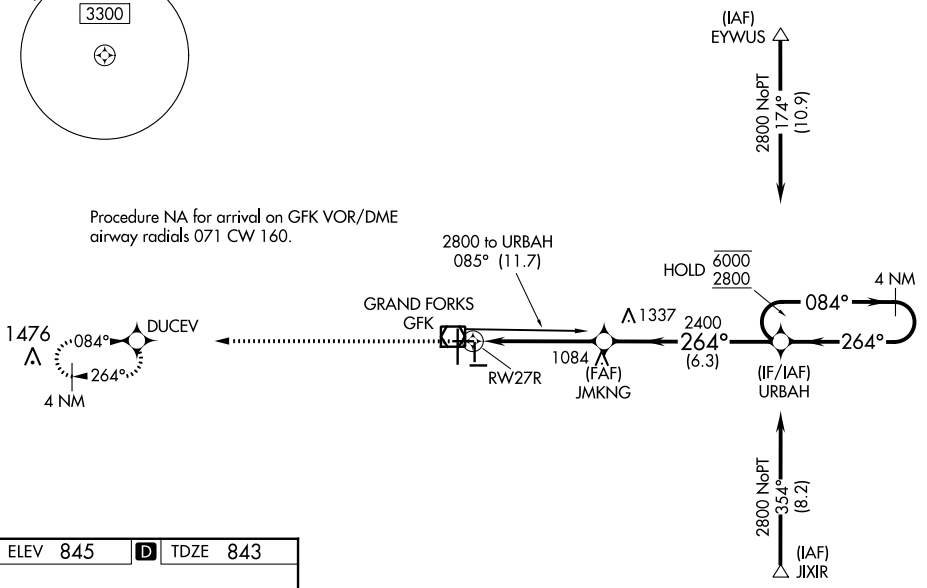
▼ VDP NA when using Crookston altimeter setting.
 ▲ When local altimeter setting not received, use Crookston altimeter setting and increase all DA 62 feet and all MDA 80 feet. Increase LNAV and Circling Cat C and D visibility 1/2 SM.

MISSED APPROACH: Climb to 4000 direct DUCEV and hold, continue climb-in-hold to 4000.

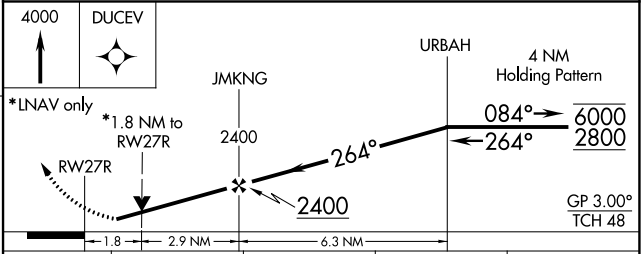
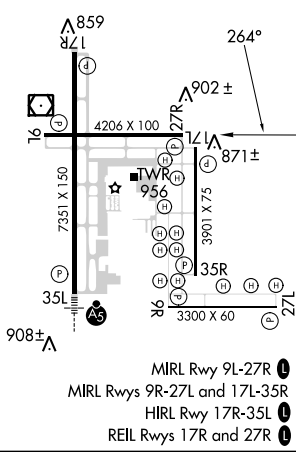
ATIS 119.4	GRAND FORKS APP CON ★ 118.1 318.1	GRAND FORKS TOWER★ 118.4(CTAF) 350.35	GND CON 124.575	CLNC DEL 135.725	UNICOM 122.95
----------------------	---	---	---------------------------	----------------------------	-------------------------



Procedure NA for arrival on GFK VOR/DME airway radials 071 CW 160.



ELEV 845	D	TDZE 843
-----------------	----------	-----------------



CATEGORY	A	B	C	D
LPV DA	1093-1 250 (300-1)			
LNAV MDA	1460-1	617 (700-1)	1460-1 3/4 617 (700-1 3/4)	1460-2 617 (700-2)
<input checked="" type="checkbox"/> CIRCLING	1460-1	615 (700-1)	1460-1 3/4 615 (700-1 3/4)	1460-2 615 (700-2)

NC-1, 11 JUL 2024 to 08 AUG 2024

NC-1, 11 JUL 2024 to 08 AUG 2024