

(NANDR2.NANDR) 23110

AL-5189 (FAA)

ARLINGTON MUNI (GKY)

NANDR TWO DEPARTURE (RNAV)

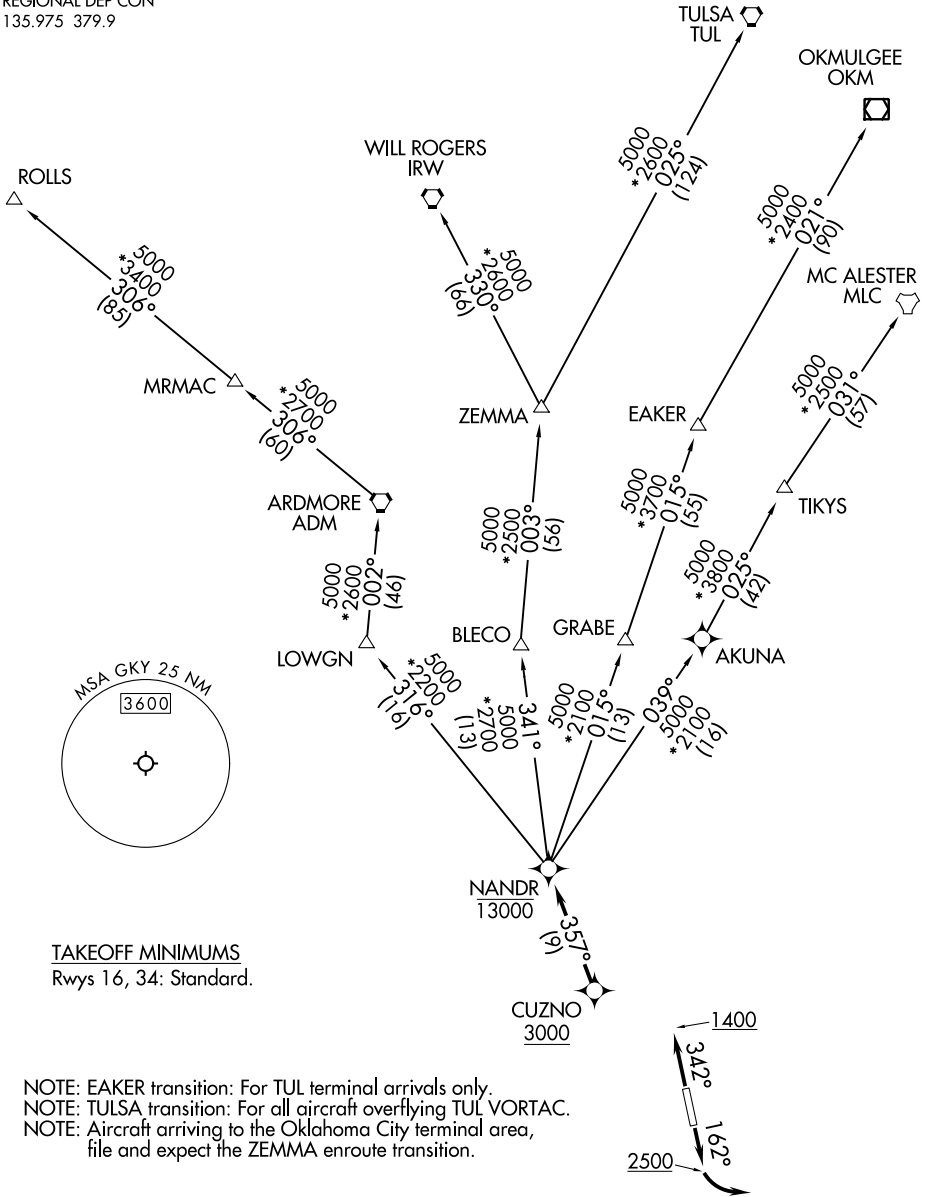
ARLINGTON, TEXAS

CLNC DEL 121.875
CLNC DEL (when twr closed)
118.85
GND CON 121.875
REGIONAL DEP CON
135.975 379.9

RNAV 1 - DME/DME/IRU or GPS.

RADAR required.

**TOP ALTITUDE:
ASSIGNED BY ATC**



SC-2, 11 JUL 2024 to 08 AUG 2024

SC-2, 11 JUL 2024 to 08 AUG 2024

(NARRATIVE ON FOLLOWING PAGE)

NOTE: Chart not to scale

NANDR TWO DEPARTURE (RNAV)

(NANDR2.NANDR) 20APR23

ARLINGTON, TEXAS

ARLINGTON MUNI (GKY)