

WAAS CH <b>56519</b> <b>W24A</b>	APP CRS <b>243°</b>	Rwy Idg TDZE Apt Elev	<b>5013</b> <b>396</b> <b>398</b>
--	------------------------	-----------------------------	---

# RNAV (GPS) RWY 24

HARRISBURG-RALEIGH (HSB)

RNP APCH.

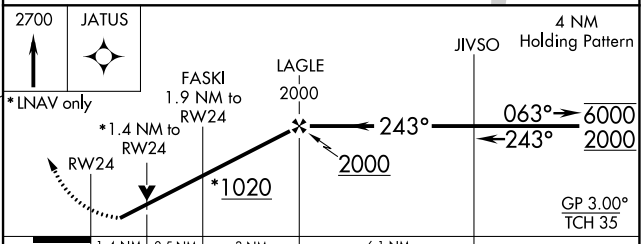
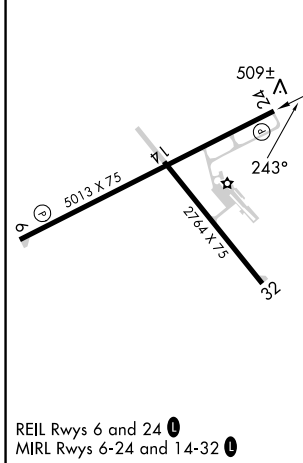
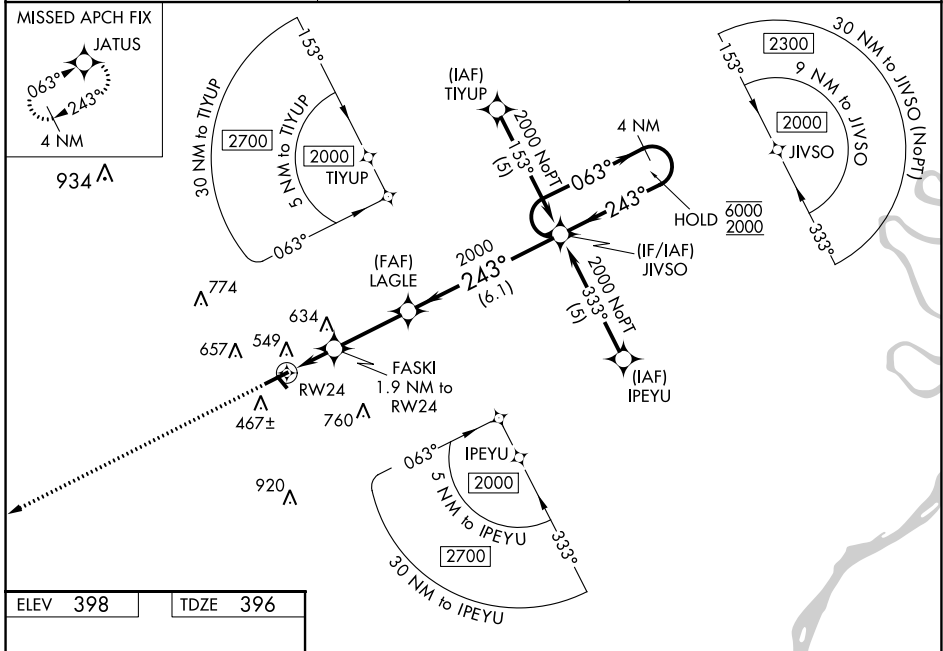
▼ For uncompensated Baro-VNAV systems, LNAV/VNAV NA below -15°C or above 54°C.  
 ▲ Rwy 24 helicopter visibility reduction below 3/4 SM NA.

MISSED APPROACH:  
Climb to 2700 direct  
JATUS and hold.

AWOS-3PT  
**135.925**

KANSAS CITY CENTER  
**127.475 346.275**

UNICOM  
**122.8 (CTAF) 0**



CATEGORY	A	B	C	D
LPV DA	697-1 301 (300-1)			
LNAV/VNAV DA	859-1 3/4 463 (500-1 3/4)			
LNAV MDA	880-1	484 (500-1)	880-1 1/4 484 (500-1 1/4)	880-1 1/2 484 (500-1 1/2)
CIRCLING	900-1 502 (600-1)	1020-1 622 (700-1)	1020-1 3/4 622 (700-1 3/4)	1080-2 1/4 682 (700-2 1/4)

EC-3, 11 JUL 2024 to 08 AUG 2024

EC-3, 11 JUL 2024 to 08 AUG 2024