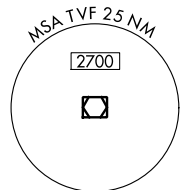
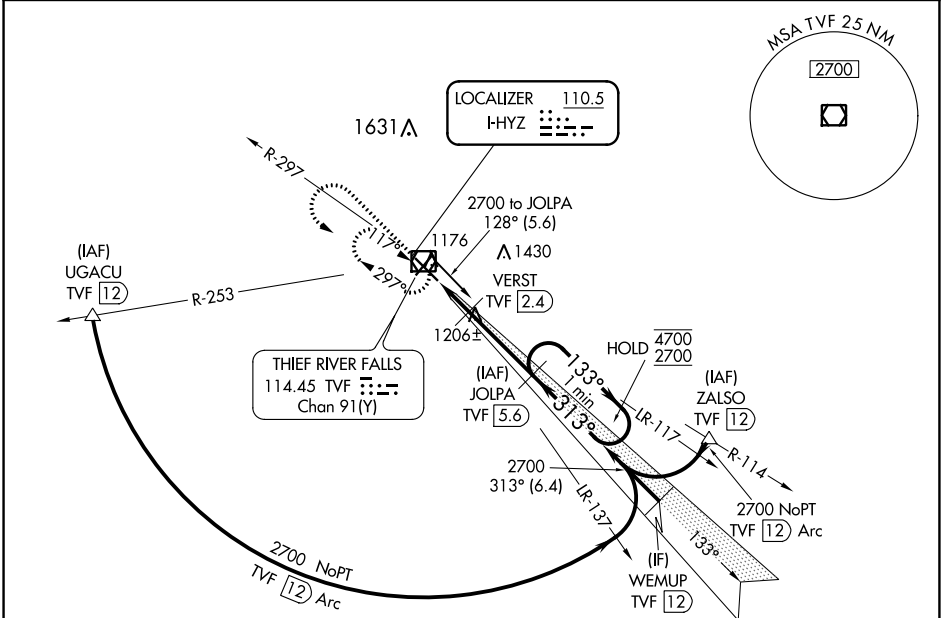


LOC I-HYZ 110.5	APP CRS 313°	Rwy Idg TDZE Apt Elev	6304 1114 1119
---------------------------	------------------------	-----------------------------	---

ILS or LOC RWY 31
THIEF RIVER FALLS RGNL (TVF)

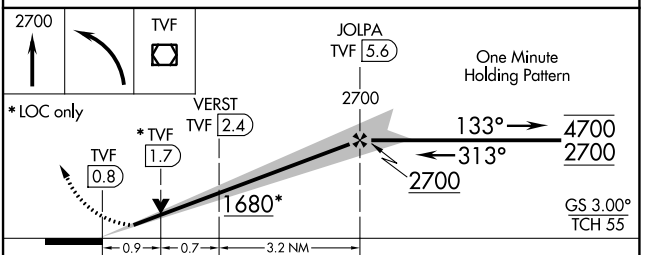
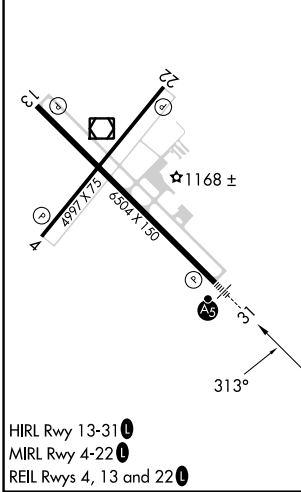
DME required for procedure entry. DME required.		MALSR	MISSED APPROACH: Climb to 2700 then left turn direct TVF VOR/DME and hold.
⚠ For inop ALS, increase S-LOC 31 Cat C/D visibility to 1 SM. ⚠ DME from TVF VOR/DME. Simultaneous reception of I-HYZ and TVF DME required.			
AWOS-3PT 119,025	MINNEAPOLIS CENTER 132.15 269.6	UNICOM 122.8 (CTAF)	



NC-1, 11 JUL 2024 to 08 AUG 2024

NC-1, 11 JUL 2024 to 08 AUG 2024

ELEV 1119	D	TDZE 1114
-----------	---	-----------



CATEGORY	A	B	C	D
S-ILS 31	1314-1/2 200 (200-1/2)			
S-LOC 31	1460-1/2	346 (400-1/2)	1460-5/8	346 (400-5/8)
C CIRCLING	1540-1 421 (500-1)	1580-1 461 (500-1)	1820-2 701 (800-2)	1980-2 3/4 861 (900-2 3/4)