

WAAS CH 72711 W13A	APP CRS 133°	Rwy Idg TDZE Apt Elev	6504 1115 1119
--	------------------------	-----------------------------	---

RNAV (GPS) RWY 13

THIEF RIVER FALLS RGNL (TVF)

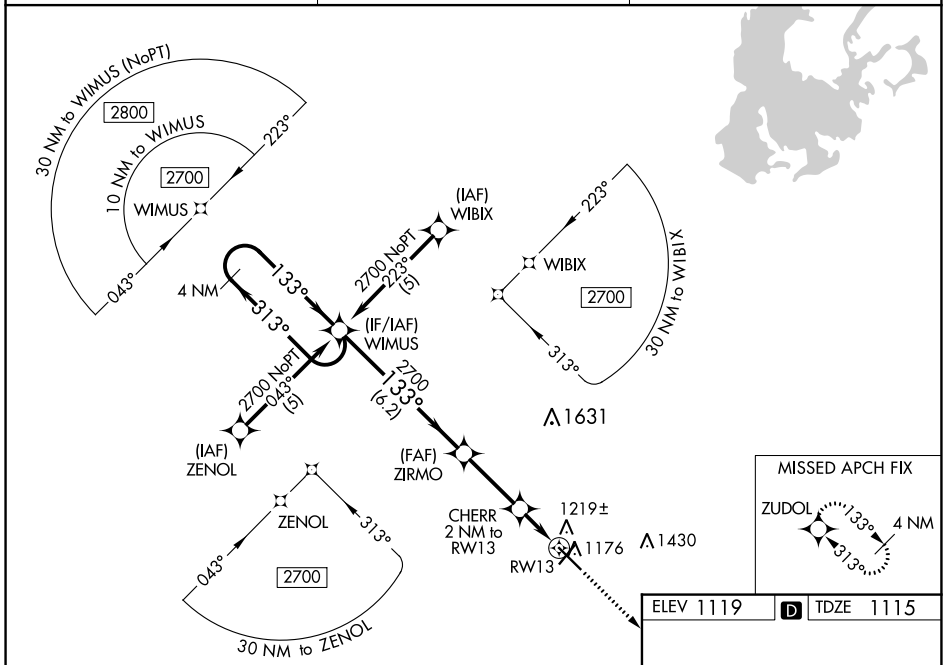
⚠ Baro-VNAV and VDP NA when using Crookston altimeter setting. For uncompensated Baro-VNAV systems, LNAV/VNAV NA below -17°C (2°F) or above 54°C (130°F). DME/DME RNP-0.3 NA.
⚠ When local altimeter setting not received, use Crookston altimeter setting: increase LPV DA to 1447 feet and all visibilities ½ SM; increase LNAV/VNAV DA to 1518 feet and all visibilities ¼ SM; increase all MDAs 100 feet and visibility Cats C and D ¾ SM.

MISSED APPROACH:
Climb to 2700 direct
ZUDOL and hold.

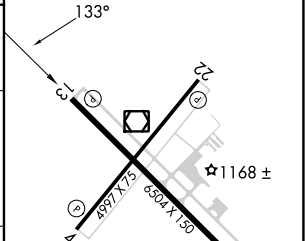
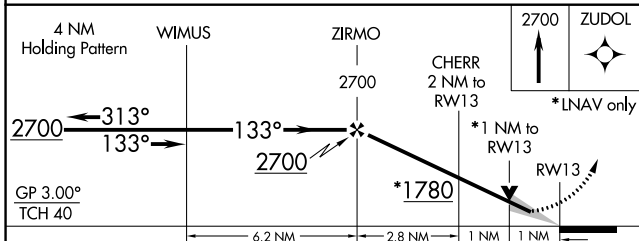
AWOS-3PT
119.025

MINNEAPOLIS CENTER
132.15 269.6

UNICOM
122.8 (CTAF) ①



ELEV 1119 **D** TDZE 1115



CATEGORY	A	B	C	D
LPV DA	1365-1 250 (300-1)			
LNAV/VNAV DA	1436-1¼ 321 (400-1¼)			
LNAV MDA	1480-1 365 (400-1)		1480-1¼ 365 (400-1¼)	
C CIRCLING	1540-1 421 (500-1)	1580-1 461 (500-1)	1820-2 701 (800-2)	1980-2¾ 861 (900-2¾)

HIRL Rwy 13-31 ①
 MRL Rwy 4-22 ①
 REIL Rws 4, 13 and 22 ①

NC-1, 11 JUL 2024 to 08 AUG 2024

NC-1, 11 JUL 2024 to 08 AUG 2024