

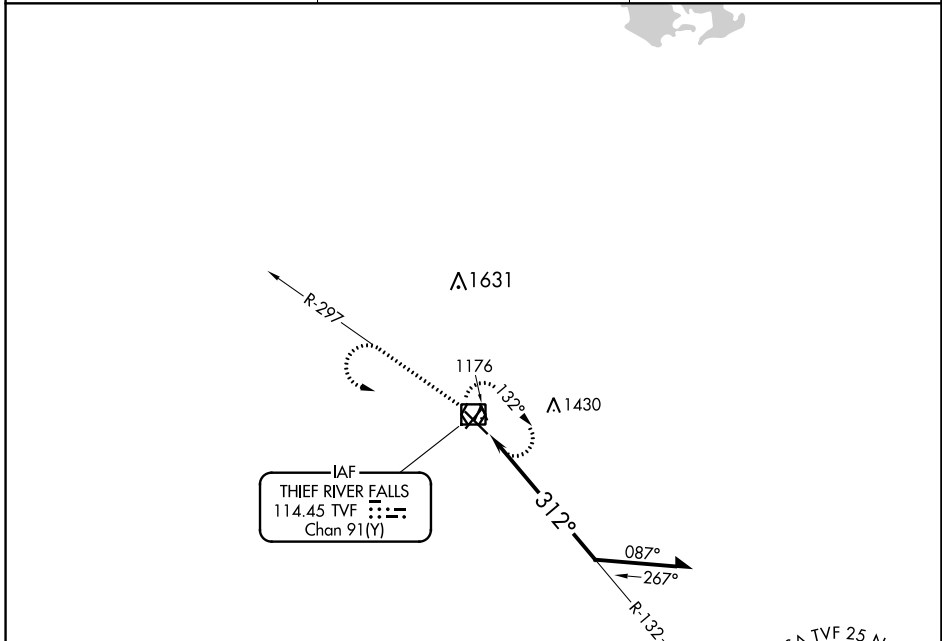
VOR/DME TVF <b>114.45</b> Chan <b>91(Y)</b>	APP CRS <b>312°</b>	Rwy Idg TDZE Apt Elev	<b>6304</b> <b>1114</b> <b>1119</b>
---	------------------------	-----------------------------	---

# VOR RWY 31

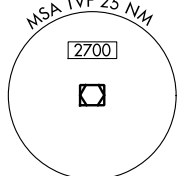
THIEF RIVER FALLS RGNL (TVF)

		MISSED APPROACH: Climb to 2700 on TVF R-297 then left turn direct TVF VOR/DME and hold.

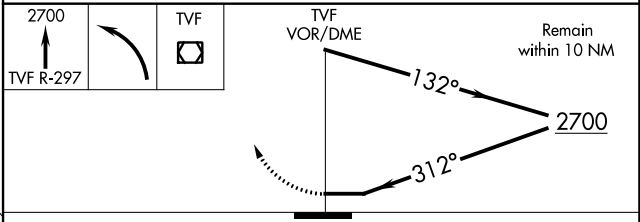
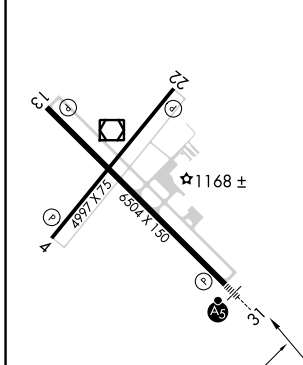
AWOS-3PT <b>119.025</b>	MINNEAPOLIS CENTER <b>132.15 269.6</b>	UNICOM <b>122.8 (CTAF)</b>
----------------------------	---	-------------------------------



IAF  
THIEF RIVER FALLS  
114.45 TVF  
Chan 91(Y)



ELEV 1119	<b>D</b>	TDZE 1114
-----------	----------	-----------



CATEGORY	A	B	C	D
S-31	1660-1/2 546 (600-1/2)		1660-1 1/8 546 (600-1 1/8)	
<b>C</b> CIRCLING	1660-1 541 (600-1)		1820-2 701 (800-2)	1980-2 3/4 861 (900-2 3/4)

NC-1, 11 JUL 2024 to 08 AUG 2024

NC-1, 11 JUL 2024 to 08 AUG 2024