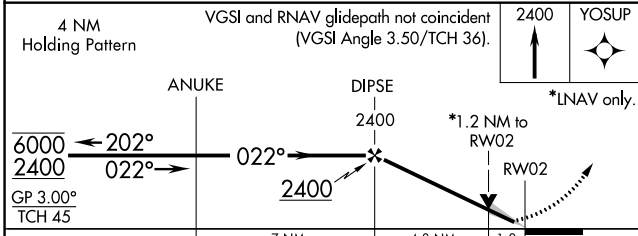
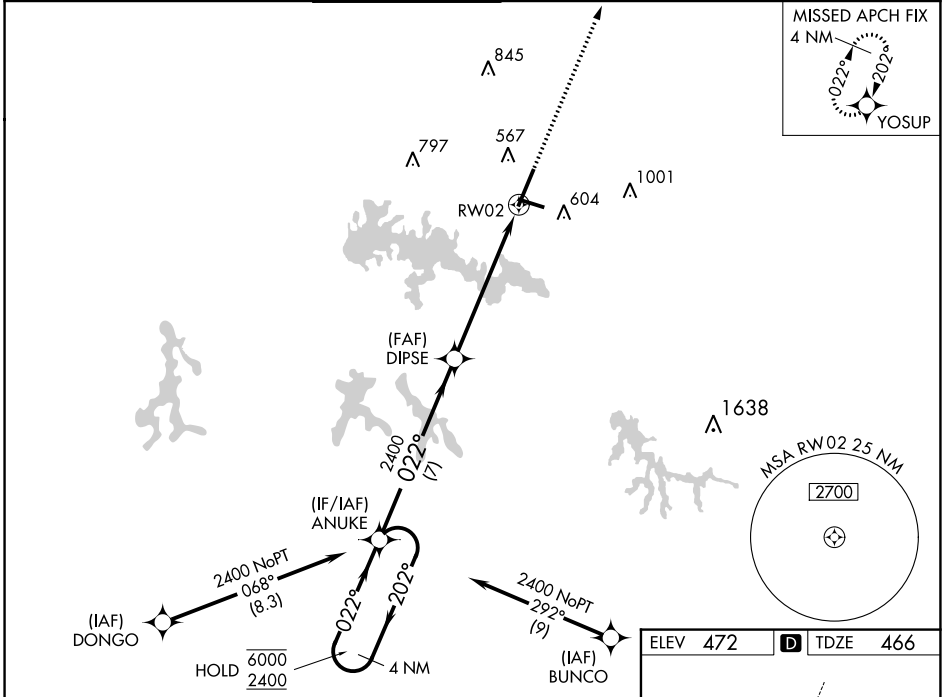


WAAS CH 61230 W02A	APP CRS 022°	Rwy Idg TDZE 466 Apt Elev 472	8012
--	------------------------	---	-------------

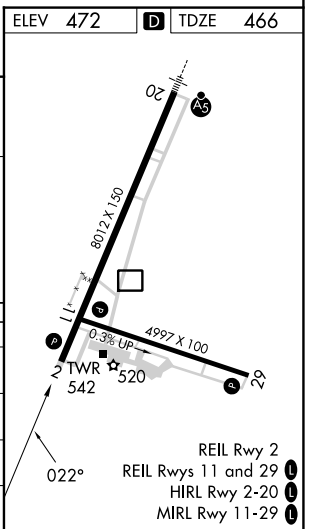
RNAV (GPS) RWY 2

VETERANS AIRPORT OF SOUTHERN ILLINOIS (MWA)

RNP APCH.		MISSED APPROACH: Climb to 2400 direct YOSUP and hold.	
AWOS-3PT 119.675	KANSAS CITY CENTER 127.475 346.275	MARION TOWER ★ 128.4 (CTAF) 0	CLNC DEL 127.475 (When twr closed)
		GND CON 121.7	UNICOM 122.95



CATEGORY	A	B	C	D
LPV DA		666- ³ / ₄	200 (200- ³ / ₄)	
LNAV/VNAV DA		753- ⁷ / ₈	287 (300- ⁷ / ₈)	
LNAV MDA	940-1	474 (500-1)	940-1 ³ / ₈	474 (500-1 ³ / ₈)
CIRCLING	940-1	468 (500-1)	1040-1 ¹ / ₂	1340-2 ³ / ₄
			568 (600-1 ¹ / ₂)	868 (900-2 ³ / ₄)



EC-3, 11 JUL 2024 to 08 AUG 2024

EC-3, 11 JUL 2024 to 08 AUG 2024