

WAAS CH <b>42616</b> <b>W02A</b>	APP CRS <b>022°</b>	Rwy Idg TDZE Apt Elev	<b>3501</b> <b>696</b> <b>699</b>
--	------------------------	-----------------------------	---

# RNAV (GPS) RWY 2

SOUTHBRIDGE MUNI (3B0)

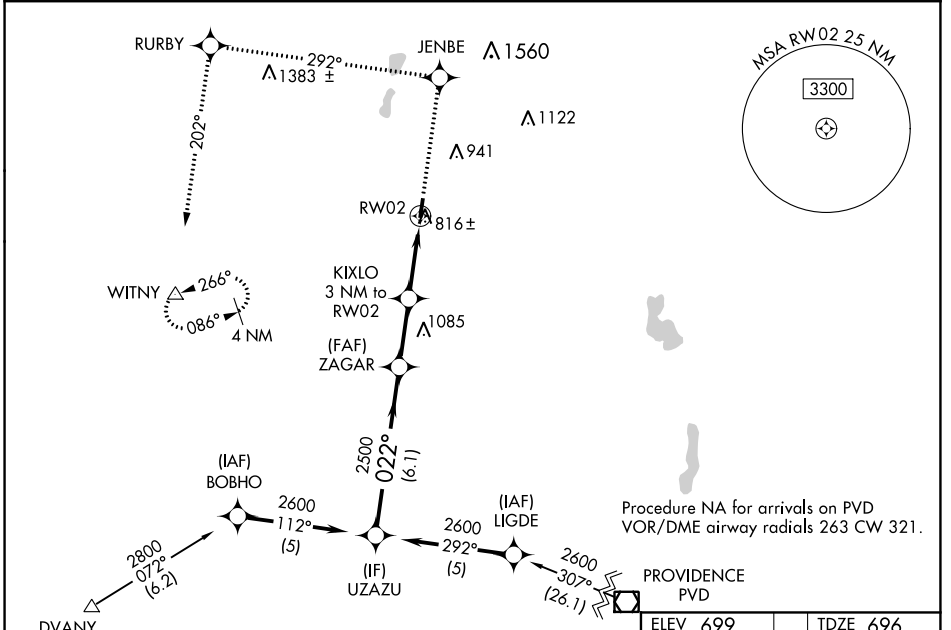
RNP APCH - GPS.

**NA** Circling Rwy 20 NA at night. Use Worcester Rgnl altimeter setting, when not received, use Windsor Locks altimeter setting: increase LPV DA to 1090 feet and all visibilities 1/8 SM. Increase all MDAs 80 feet and LNAV visibility Cat C 1/4 SM, and Circling visibility Cat C 1/2 SM.

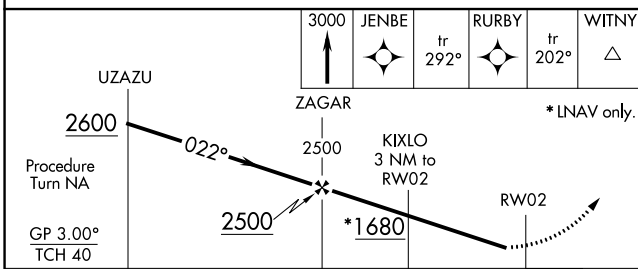
MISSED APPROACH: Climb to 3000 direct JENBE and via track 292° to RURBY and via track 292° to WITNY and via track 202° to WITNY and hold.

BRADLEY APP CON **119.0 327.1**

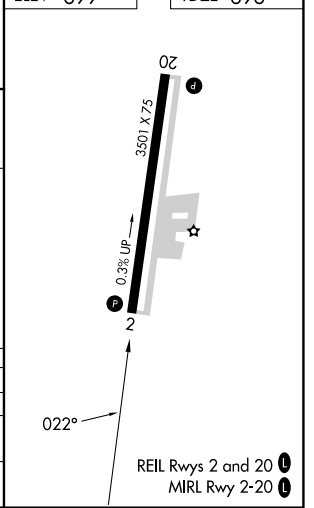
UNICOM **122.8 (CTAF)**



ELEV 699	TDZE 696
----------	----------



CATEGORY	A	B	C	D
LPV DA	1018-1		322 (400-1)	NA
LNAV MDA	1300-1	604 (700-1)	1300-1 1/4 604 (700-1 1/4)	NA
<b>C</b> CIRCLING	1360-1	661 (700-1)	1360-1 1/4 661 (700-1 1/4)	NA



NE-1, 11 JUL 2024 to 08 AUG 2024

NE-1, 11 JUL 2024 to 08 AUG 2024