


VOR/DME GPZ 111.4 Chan 51	APP CRS 334°	Rwy Idg 5756 TDZE 1356 Apt Elev 1356
---	------------------------	---

VOR RWY 34

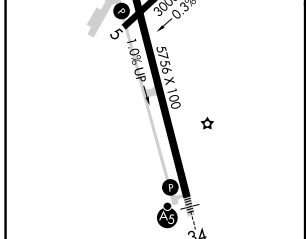
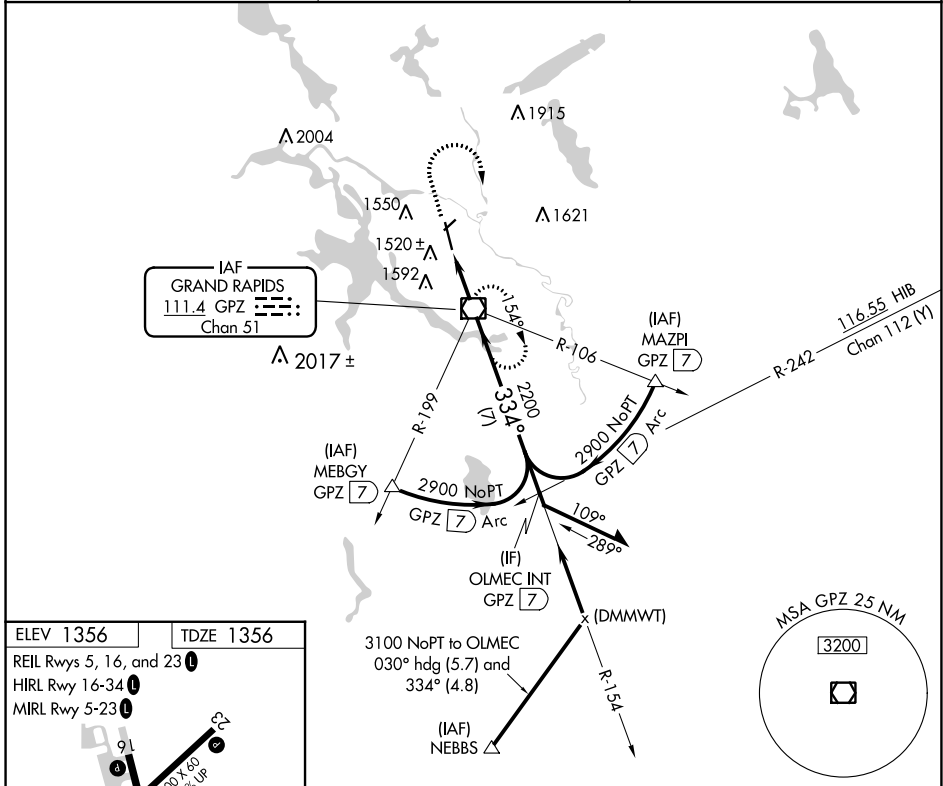
GRAND RAPIDS/ITASCA COUNTY-GORDON NEWSTROM FLD (GPZ)

⚠ VDP NA when using Hibbing's altimeter setting. Circling Rwy 5 NA at night. Circling NA for Cat D east of Rwy 16-34. When local altimeter setting not received, use Hibbing altimeter setting and increase all MDAs 80 feet, increase S-34 Cat C visibility 1/8 SM and Circling Cats C/D visibility 1/4 SM.

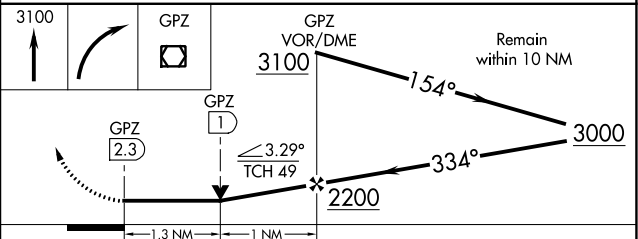
MALSR 

MISSED APPROACH: Climb to 3100 then right turn direct GPZ VOR/DME and hold.

AWOS-3PT 118.425	MINNEAPOLIS CENTER 127.9 281.45	UNICOM 122.8 (CTAF) 0
----------------------------	---	---------------------------------



FAF to MAP 2.3 NM					
Knots	60	90	120	150	180
Min:Sec	2:18	1:32	1:09	0:55	0:46



CATEGORY	A	B	C	D
S-34	1800-1/2	444 (500-1/2)	1800-7/8 444 (500-7/8)	1800-1 444 (500-1)
CIRCLING	1900-1	544 (600-1)	1900-1/2 544 (600-1/2)	2000-2 644 (700-2)

NC-1, 11 JUL 2024 to 08 AUG 2024

NC-1, 11 JUL 2024 to 08 AUG 2024