

APP CRS <b>260°</b>	Rwy Idg <b>3349</b>
	TDZE <b>361</b>
	Apt Elev <b>370</b>

# RNAV (GPS) RWY 26

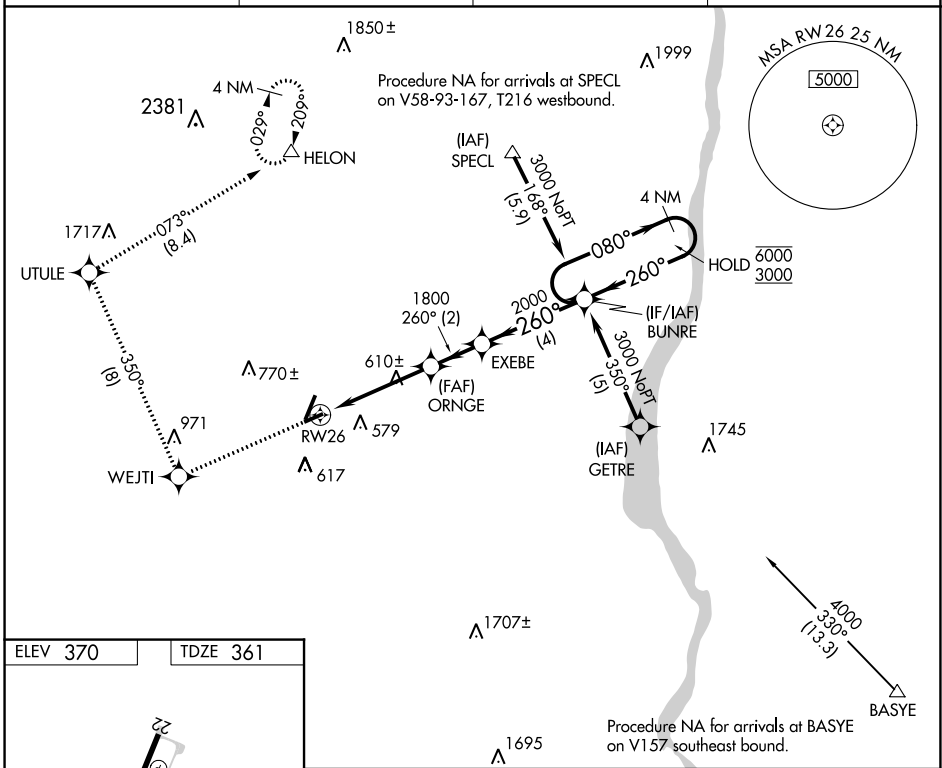
ORANGE COUNTY (MGJ)

RNP APCH.

- ▼ Rwy 26 helicopter visibility reduction below 1 SM NA.
- ▲ Straight-in Rwy 26 NA at night, Circling Rwy 8, 22, 26 NA at night.

MISSED APPROACH: Climb to 4000 direct WEJTI and right turn on track 350° to UTULE and on track 073° to HELON and hold.

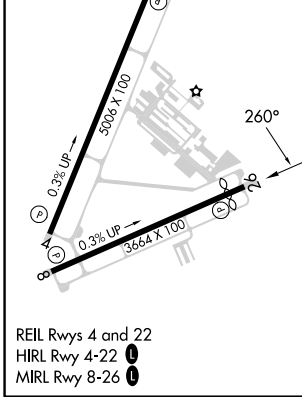
ASOS <b>119.275</b>	NEW YORK APP CON <b>132.75 363.1</b>	CLNC DEL <b>123.85</b>	UNICOM <b>122.725 (CTAF) 0</b>
------------------------	---	---------------------------	-----------------------------------



NE-2, 11 JUL 2024 to 08 AUG 2024

NE-2, 11 JUL 2024 to 08 AUG 2024

ELEV 370	TDZE 361
----------	----------



4000	WEJTI	UTULE	HELON	Visual Segment-Obstacles.
	tr 350°	tr 073°		BUNRE 4 NM Holding Pattern
VGSi and descent angles not coincident (VGSi Angle 3.50/TCH 43).				
CATEGORY	A	B	C	D
LNAV MDA	920-1	559 (600-1)	920-1½ 559 (600-1½)	920-1¾ 559 (600-1¾)
<b>C</b> CIRCLING	1200-1¼	830 (900-1¼)	1200-2½ 830 (900-2½)	1220-2¾ 850 (900-2¾)