

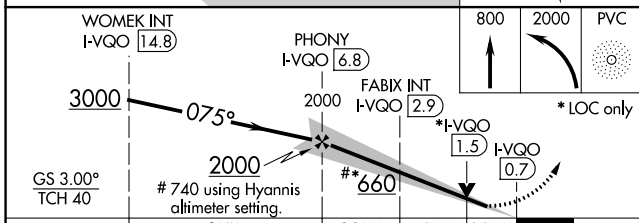
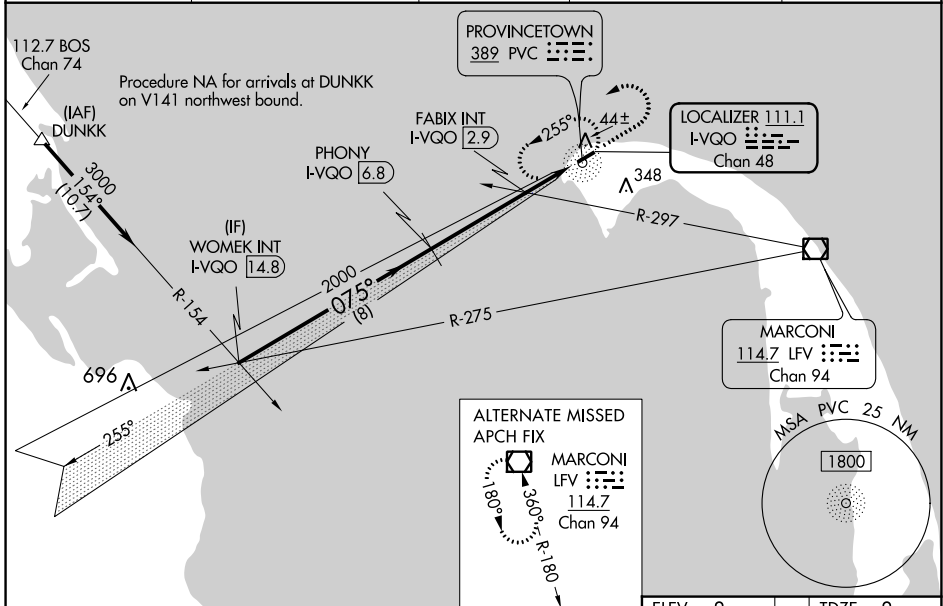
LOC/DME I-VQO 111.1 Chan 48	APP CRS 075°	Rwy Idg 3502 TDZE 8 Apt Elev 8
--	------------------------	---

ILS or LOC RWY 7

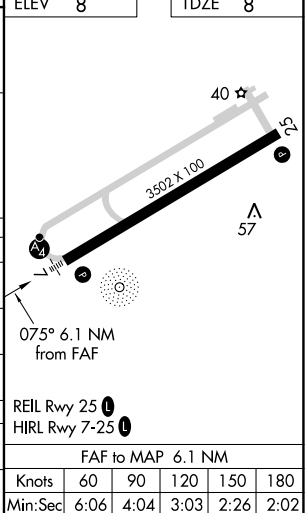
PROVINCETOWN MUNI (PVC)

DME required for LOC only, ADF.		MALSF	MISSED APPROACH: Climb to 800 then climbing left turn to 2000 direct PVC NDB and hold, continue climb-in-hold to 2000.
<p>▼ NA Inop table does not apply to S-ILS 7. When local altimeter setting not received, use Hyannis altimeter setting and increase all DA to 271 and all MDA 80 feet: increase S-LOC 7 and FABIX fix minimums S-LOC 7 all Cats visibility ¼ SM. VDP NA when using Hyannis altimeter setting. For inop ALS when using Hyannis altimeter setting, increase S-ILS 7 all Cats visibility to ⅓ SM.</p>			

AWOS-3PT 119.275	BOSTON APP CON ★ 118.2	CLNC DEL 120.65	UNICOM 122.8 (CTAF)	122.85 ①
----------------------------	----------------------------------	---------------------------	-------------------------------	-----------------



CATEGORY	A	B	C	D
S-ILS 7	208-¾	200 (200-¾)		NA
S-LOC 7	660-¾	652 (700-¾)		NA
☑ CIRCLING	660-1	652 (700-1)		NA
FABIX FIX MINIMUMS (DUAL VOR RECEIVERS OR DME REQUIRED)				
S-LOC 7	320-¾	312 (400-¾)		NA
☑ CIRCLING	460-1 452 (500-1)	660-1 652 (700-1)		NA



NE-1, 11 JUL 2024 to 08 AUG 2024

NE-1, 11 JUL 2024 to 08 AUG 2024